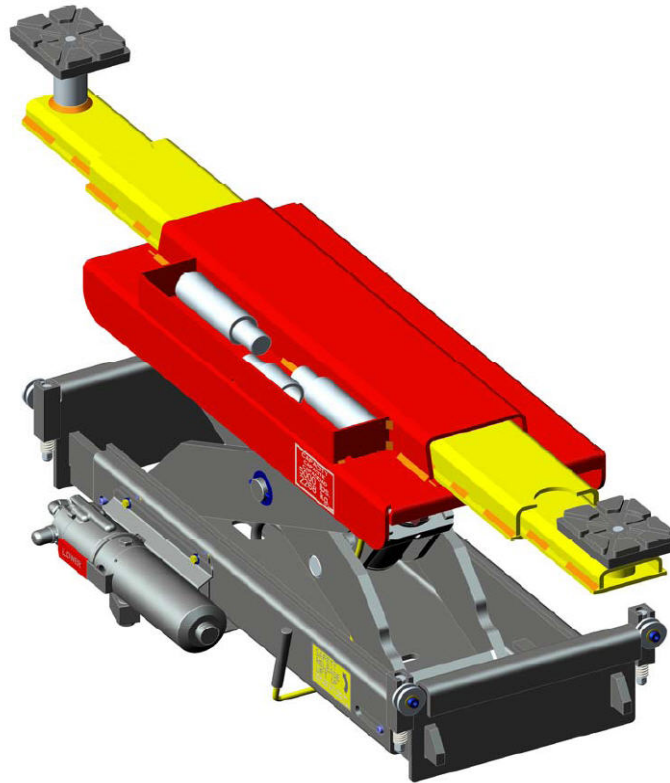


**ADJUSTABLE
AIR-HYDRAULIC
ROLLING JACKBEAM
5000 lbs.**

**Models:
EELR503A**



INSTALLATION AND OPERATION MANUAL



Snap-on Equipment

6500 Millcreek Drive, Mississauga, Ontario, L5N 2W6
Customer Service 1-800-268-7959

JUNE 2010 REV. - 6-3866

**READ ALL INSTRUCTIONS THOROUGHLY BEFORE INSTALLING,
OPERATING, SERVICING, OR MAINTAINING THE LIFT.**

JACKBEAM INSTALLATION AND OPERATION MANUAL

The Jackbeam should only be used with lifts installed on level concrete floors conforming to the installation instructions for the lift. Consult lift installation instructions for concrete thickness and strength requirements. Ensure clearance around and above lift conforms to installation instructions for the lift.



ATTENTION! This lift is intended for indoor installation only. It is prohibited to install this product outdoors. Operating environment temperature range should be 41 – 104 °F (5 – 40 °C). Failure to adhere will result in decertification, loss of warranty, and possible damage to the equipment.

Installation of lifts shall be performed in accordance with ANSO/ALI ALIS, Safety Requirements for Installation and Service of Automotive Lifts

For additional safety instructions regarding lifting, lift types, warning labels, preparing to lift, vehicle spotting, vehicle lifting, maintaining load stability, emergency procedures, vehicle lowering, lift limitations, lift maintenance, good shop practices, installation, operator training and owner/employer responsibilities, please refer to “Lifting It Right” (ALI/SM) and “Safety Tips” (ALI/ST).

For additional instruction on general requirements for lift operation, please refer to “Automotive Lift-Safety Requirements For Operation, Inspection and Maintenance” (ANSI/ALI ALOIM).

+ 070126-Quadra-WLSIA01

SAFETY INSTRUCTIONS

If attachments, accessories or configuration modifying components that are located in the load path, affect operation of the lift, affect the lift electrical listing or affect intended vehicle accommodation are used on this lift and, if they are not certified for use on this lift, then the certification of this lift shall become null and void. Contact the participant for information pertaining to certified attachments, accessories or configuration modifying components.

www.autolift.org

©2007 by ALI, Inc.

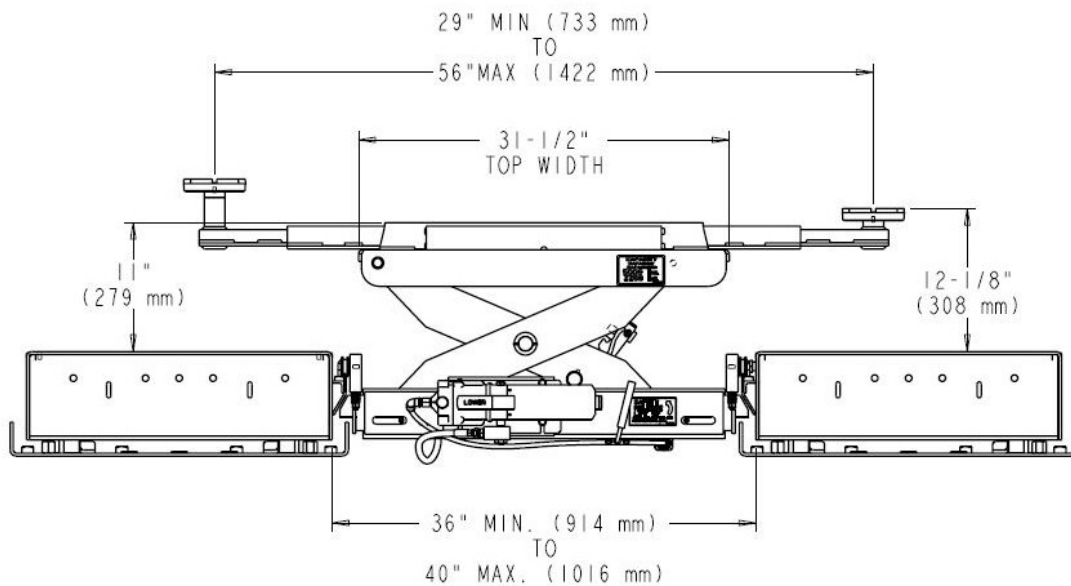
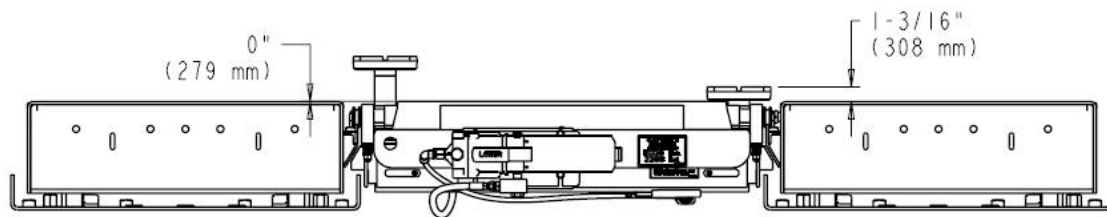
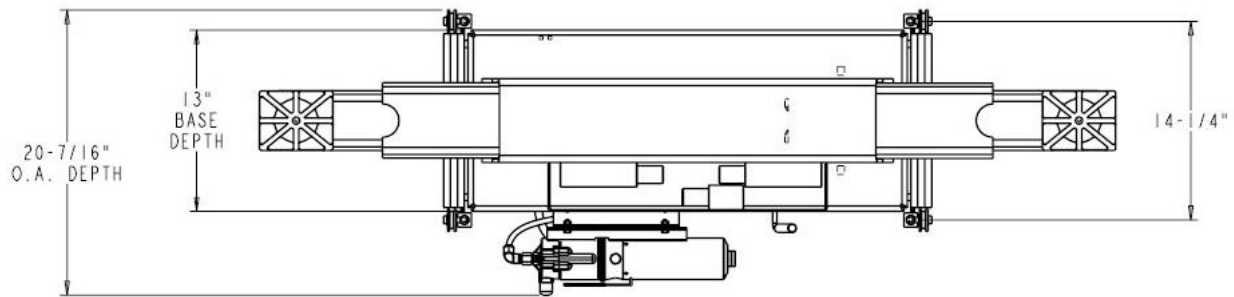
ALI / WLSIA01

Table of Contents

1.0	Specifications	3
2.0	Shipping Contents.....	4
3.0	Position the Jackbeam on Lift	5
4.0	Air Connection.....	6
5.0	Raising the Jackbeam.....	7
6.0	Lowering the Jackbeam	7
7.0	Positioning of Vehicle on Jackbeam.....	7
8.0	Recommended Maintenance	8
9.0	Jackbeam Exploded View	10
10.0	Jackbeam Parts List.....	10
11.0	Air / Hydraulic Pump Exploded View	12
12.0	Air / Hydraulic Pump Parts List	12
13.0	Maintenance Schedule.....	12

1.0 Specifications

Capacity	5,000 lbs.	2268 kg
Minimum Track Width Adjustment	33-13/16"	859 mm
Maximum Track Width Adjustment	37-13/16"	960 mm
Minimum Arm Reach	29"	737 mm
Maximum Arm Reach	56"	1422 mm
Minimum Lowered Height above Deck Surface (no stack pad)	0"	0 mm
Maximum Raised Height above Deck Surface (w/ Std. pad)	12-1/8"	305 mm
Standard Pad Heights (2 Pads)	1 1/4"	32 mm
Standard Adapter Height (2 of each)	2-1/2" & 5-1/2"	64 mm & 140 mm
Power Requirements	90-120 psi	6-8 bar
Shipping Weight	373 Lbs.	169 Kg.



Jackbeam plan and elevation views

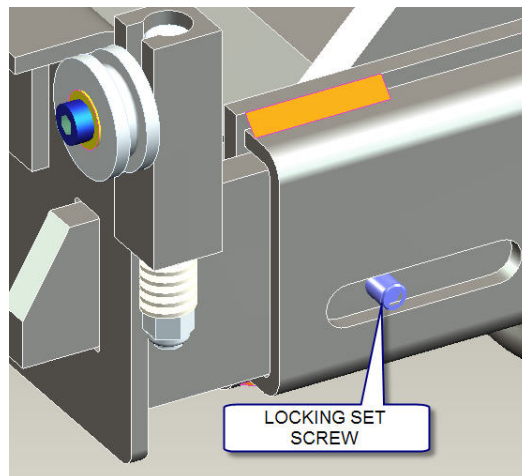
2.0 Shipping Contents

The Jackbeam is fully assembled and packaged to protect it from any damage that may occur during shipping. Included are the following components:

- Jackbeam Assembly, including:
 - Jacking Beam Body
 - Lifting Arms
 - Roller Adapters
 - Air/Hydraulic Pump
- Stack Pad and Adapters
- Installation and Operation Manual

3.0 Position the Jackbeam on Lift

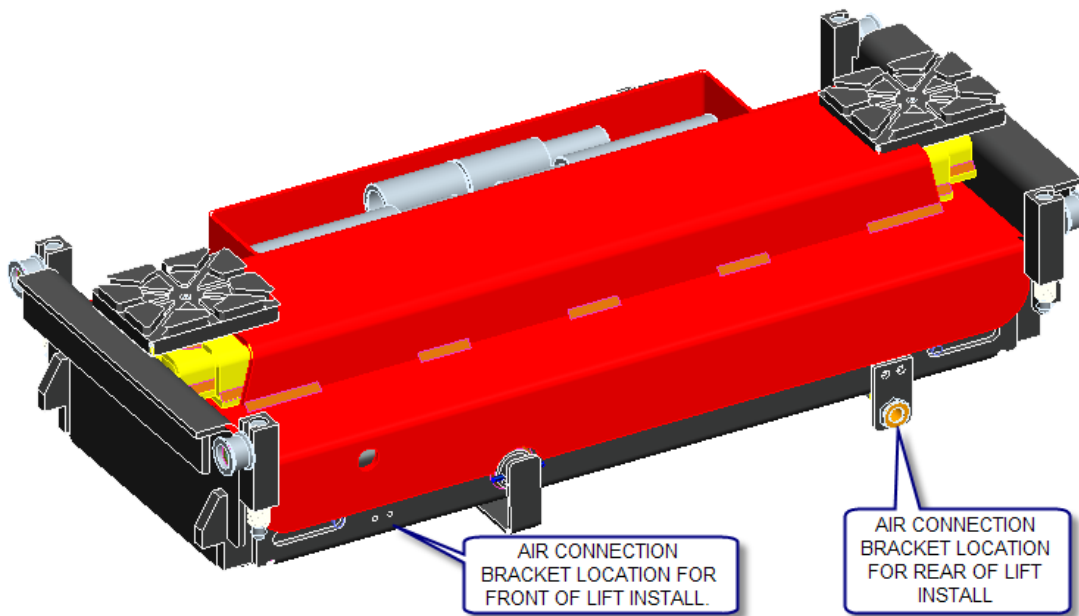
1. The Jackbeam must be positioned on the lift correctly prior to usage. The pump side of the jacking beam should face outwards.
2. Remove ½” hex head bolt from jackbeam rails at front and rear of decks.
3. Extend each Roller Adapter from the base of the Jacking Beam and place on lift with the rollers centered on the jack beam rails.
4. To ensure that the Jackbeam is centered between the decks, the adapters must be equally extended on both sides of the base.
5. Slide Jackbeam onto rail from front and/or rear of lift.
6. Adjust Roller Adapters and tighten locking set screws.



ATTENTION! Do not remove set screws and extend more than recommended.

4.0 Air Connection

1. The Jackbeam must be connected to an air supply in order to operate. There are (2) configurations the air supply can be connected:
 - a. The Jackbeam is shipped pre-assembled to install at the front of the lift. The air connection bracket is on the rear left side of the Jacking Beam.
 - b. To install Jackbeam at the rear of the lift, the air connection bracket must be removed and reinstalled on the rear right side. Disconnect the 3/8" polytube, reroute, cut to length, and reinstall.



2. Attach the recoil hose to the bulkhead fitting on the Jackbeam and the other end to the bulkhead fitting on the side of the lift runway.

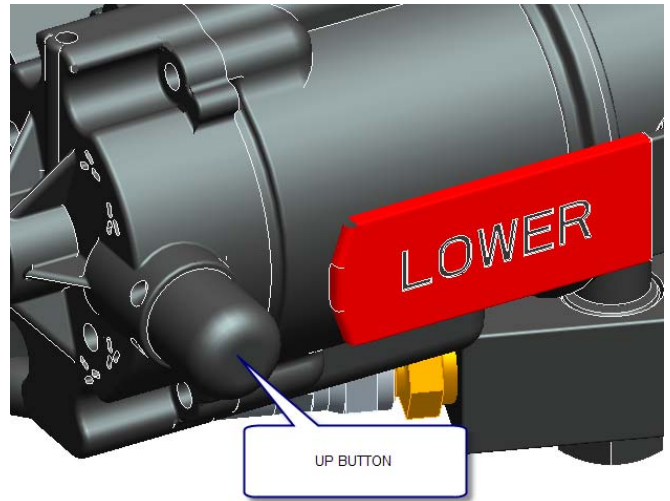
NOTE: The jackbeam is to be used on a lift with air connections located at the center of the runway. If your lift is equipped with air connections at the end of the runway, "Relocation Kit #01691" may be used.

3. Prior to placing vehicle on lift, raise and lower the Jackbeam multiple times and check for air and hydraulic leaks. See sections and "[5.0 Raising the Jackbeam](#)" and "[6.0 Lowering the Jackbeam](#)" for operation instructions.

NOTE: It is the user(s) responsibility to supply an air filter/lubricator to ensure a clean air source is provided to the air/hydraulic pump. Failure to provide clean air may void manufacturers' warranty.

5.0 Raising the Jackbeam

1. Prior to placing vehicle on lift,
2. Press the up button on the air/hydraulic pump and hold until jacking beam is at full working height and the mechanical safety is in place.
3. Check system for air and hydraulic leaks as lift travels up.
4. Lower the Jackbeam onto the safeties (Note: there are two safety positions to allow for multiple working heights).



6.0 Lowering the Jackbeam

1. To lower the jackbeam, first raise the jackbeam up off the mechanical safety lock.
2. Disengage the safety by lifting the Safety Release Handle.

NOTE: As the jack lowers, the Safety Release Handle will rotate. The Safety Release Handle must be manually held in the release position as the jack lowers. Minimal force is required, let handle rotate.

3. Press the lowering handle on the pump to release pressure allowing the jacking beam to lower to its full down position.



ATTENTION! Never operate a Jackbeam that is not in proper working order or in a manner not recommended by the vehicle or jacking beam manufacturer.



WARNING! Always ensure that the mechanical safety is engaged whenever a vehicle is supported by the Jackbeam.

WARNING! Keep clear from pinch points when lift is moving.

7.0 Positioning of Vehicle on Jackbeam

1. The vehicle must be positioned correctly on the lift prior to raising the vehicle with the Jackbeam. With the vehicle's center of gravity equally spaced between the decks, the Jackbeam can be used to lift the vehicle.



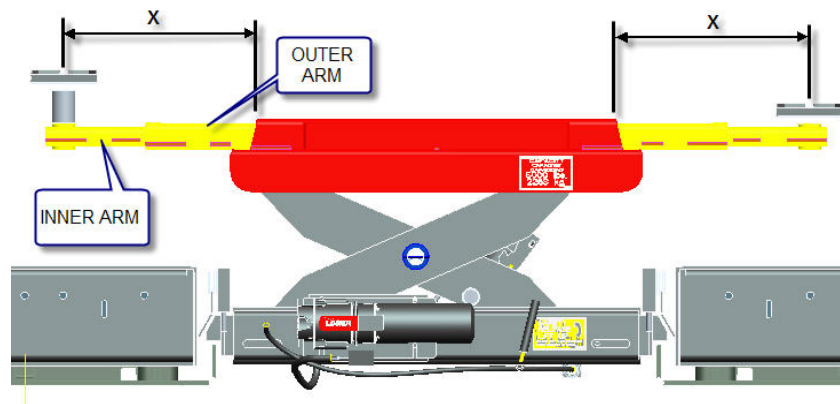
ATTENTION! Lifting an improperly positioned vehicle with the Jackbeam increases the possibility of one deck leading or lagging the order Deck.

2. Move the Jackbeam to the desired pickup area.
3. Select lifting points that are the same distance from the centerline of the vehicle, i.e. position the Jackbeam pads so that they make contact at the same point on each side of the vehicle.
4. With the Jackbeam positioned, insert the stack pads if not already installed. If required, insert either the 2-1/2" or 5-1/2" adapter in the lifting arm prior to the stack pad.

NOTE: Use only the same lifting pad adapters on both arms. Do not use both the 2-1/2" and 5-1/2" adapters together.

NOTE: Lift vehicle at vehicle manufacturer's recommended pickup points only. Please refer to "Lift it Right" Guide (ALI/SM).

5. Extend the arms to the desired pickup point. Ensure that the inner and outer arms are extended equally (labeled "X" below) on each side, respectively. If required, raise the jack so the arms can be extended above the runways. Extend the outer arms as much as possible for additional support.

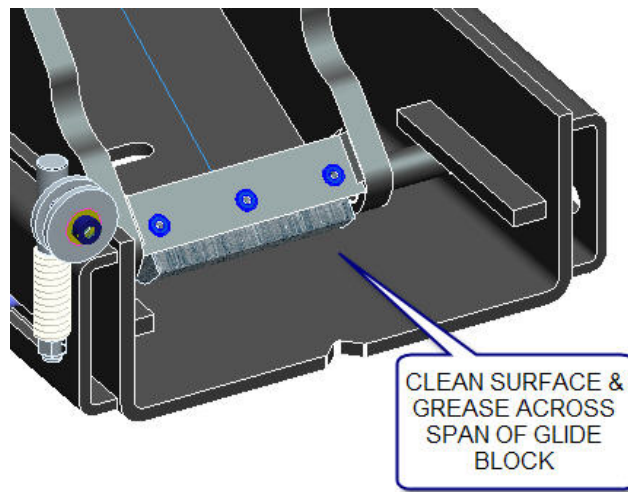


6. As the Jackbeam raises the vehicle, the weight of the Jackbeam is transferred from the rollers to the lift. The roller assemblies on the Jackbeam are spring loaded and are meant to carry the weight of the jack only. When load is applied, the structure cannot be moved.
7. To lower the vehicle, refer back to section ["6.0 Lowering the Jack Beam"](#).

8.0 Recommended Maintenance

1. Inspect the Jackbeam on a daily basis to ensure the jacking beam is in proper working condition.

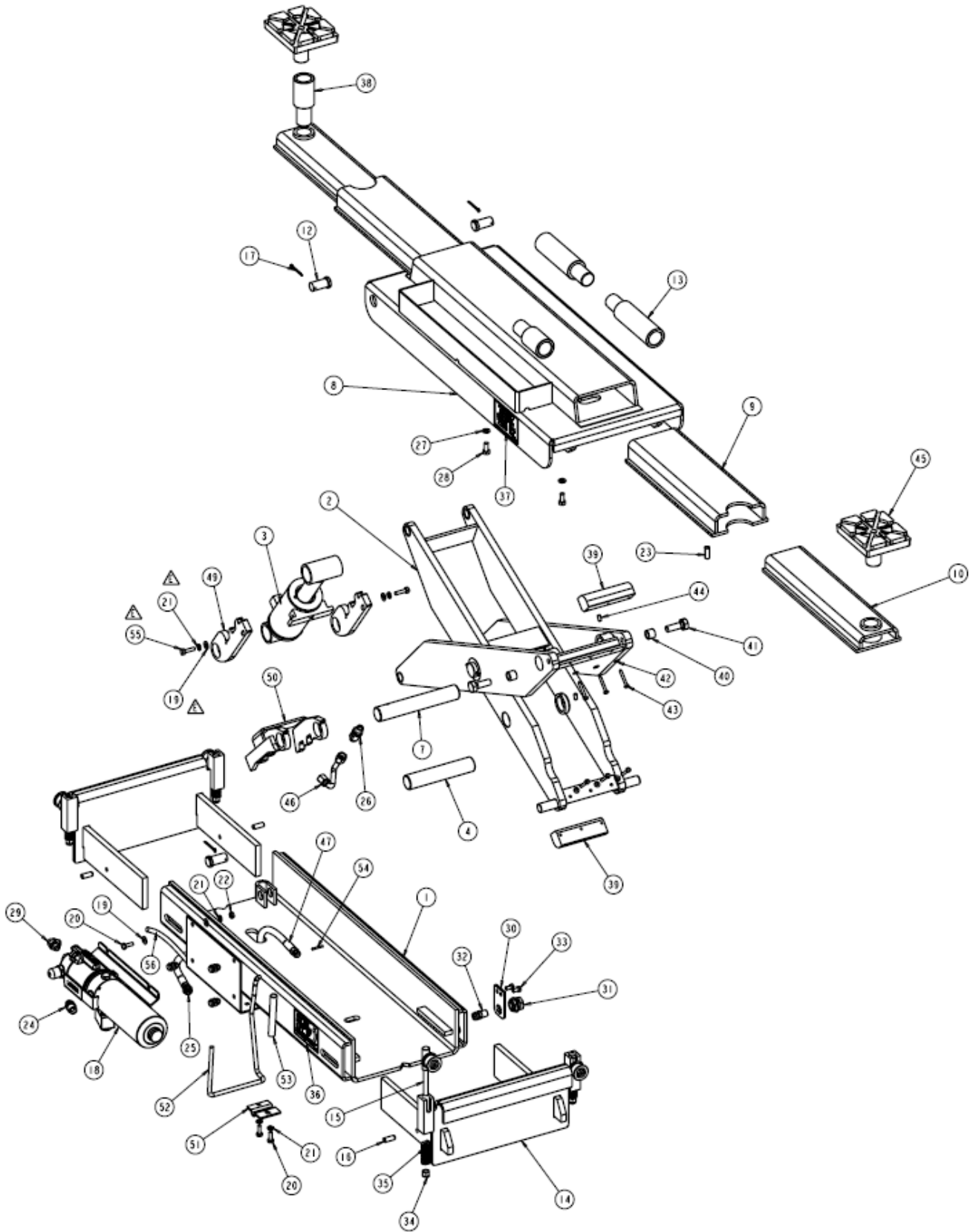
2. Make certain that the automatic engaging safety drops into place when the Jackbeam is raised and that it will release when held in the up position during lowering.
3. Check the hydraulic fluid when jacking beam is in the lowered position by removing the pump, turning it upright and then remove filler breather cap. Refill if required.
4. Keep the air source clean and make certain that an air filter is used to keep dirt out of the air motor. To maintain a clean shop air supply, (oil, lube, filter and regulator) should always be in good working order in conjunction with the use of an oiler/separator.
5. Keep the entire Jackbeam as clean as possible at all times.
6. Ensure that the lifting arm stops are working correctly. Fully extended the arms until the stops engage.
7. Check functionality of the rollers, keep clean.
8. Keep plastic glide area clean and greased. Use multipurpose, extreme pressure grease such as Megaplex XD5, NLGI Grade 2 or equivalent. See below.



ATTENTION! Discontinue the use of the Jackbeam immediately if any component(s) are damaged, defective, worn or broken. Please contact Customer Service 1-800-268-7959.

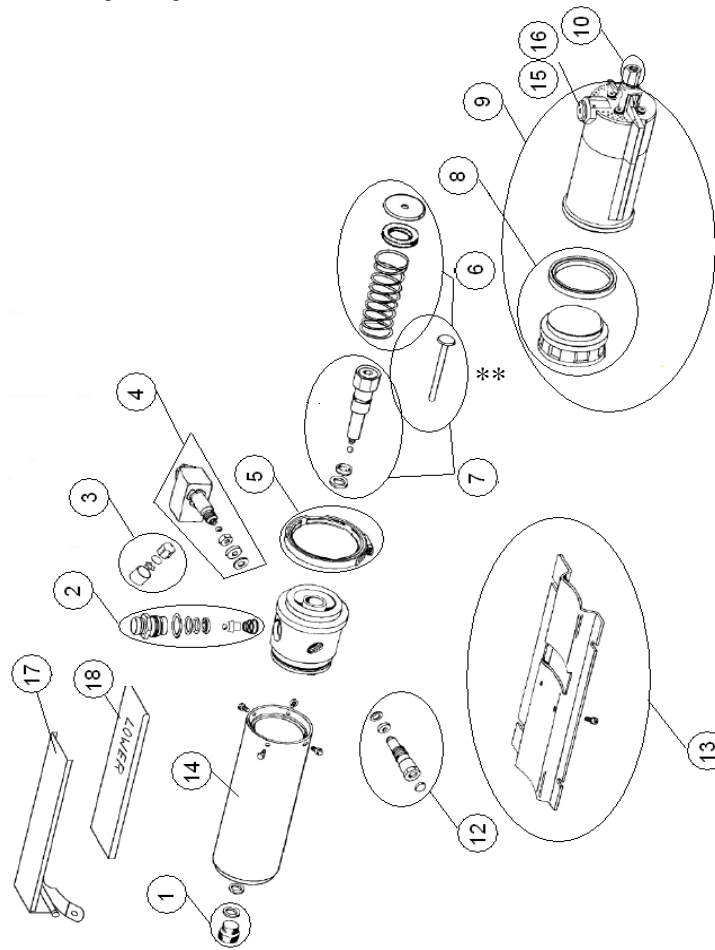
9.0 Jackbeam Exploded View

10.0 Jackbeam Parts List



ITEM	QTY.	DESCRIPTION	PART #
1	1	BASE FRAME WELDMENT	3-0960
2	1	SCISSOR ASSEMBLY	2-2402
3	1	CYLINDER ASSEMBLY	3-0961
4	1	LOWER CYLINDER SHAFT	1-3477
7	1	UPPER CYLINDER SHAFT	1-3556
8	1	TOP COVER WELDMENT	3-0959
9	2	OUTER ARM WELDMENT	2-2639
10	2	INNER ARM WELDMENT	2-2640
12	4	HEADED PIN	1-1887
13	2	STACK PAD ADAPTER 5-1/2"	2-2724
14	2	ROLLER ADAPTER WELDMENT	2-2658
15	4	ROLLER ASSEMBLY	2-2777
16	4	SET SCREW 3/8" DIA. x 1" LG.	6-3061
17	4	COTTER PIN, 1/8" DIA. X 1-1/2" LG	6-0978
18	1	AIR/HYDRAULIC PUMP	6-3805
19	10	FLAT WASHER, 1/4" ID	6-0060
20	6	HEX HEAD BOLT, 1/4" x 3/4" LG.	6-0178
21	10	LOCK WASHER, 1/4" ID	6-0056
22	4	HEX NUT, 1/4"-20UNC	6-0032
23	2	ROLL PIN, 1/4"DIA x 1-3/4" LG.	6-3487
24	1	ADAPTER, 3/8 NPT-M X 3/8 JIC-M	6-0011
25	1	HYDRAULIC HOSE ASS'Y	2-2664
26	1	FLOW RESTRICTOR, 0.75MM	6-3861
27	2	LOCK WASHER, 5/16" ID	6-0674
28	2	HEX HEAD BOLT, 5/16"-18UNC x 3/4" LG.	6-0423
29	1	ELBOW, 1/4"NPT-M – 3/8" POLY PUSH LOCK	6-3010
30	1	AIR JACK BRACKET	1-3648
31	1	TERMINAL BOLT 3/4", SHORT	6-0713
32	1	ADAPTER, 3/8" POLY – 1/4" NPT	6-0710
33	2	HEX HEAD BOLT, 1/4"-20UNC X 1/2"LG	6-0126
34	4	NYLON LOCK NUT, 3/8"-16UNC	6-0042
35	4	SPRING	6-0081
36	1	DECAL, SAFETY RELEASE	6-3863
37	1	DECAL, CAPACITY	6-3688
38	2	STACK PAD ADAPTER 2-1/2"	1-3711
39	2	PLASTIC GLIDE BEARING BLOCK	1-3658
40	2	SPACER, RETAINER BOLT	1-3659
41	2	HEX HEAD BOLT, 1/2"-13UNC x 1-1/2" LG.	6-0291
42	6	FLAT WASHER, #10	6-0816
43	6	SELF TAPPING SCREW, #10 x 1-1/2" LG.	6-1523
44	4	SET SCREW, 1/4"-20UNC x 1/2" LG.	6-0438
45	2	STACK PAD ASSEMBLY	1-3665
46	1	HYDRAULIC TUBE ASSEMBLY	1-3667
49	2	SAFETY BAR, BOTTOM	1-3247
50	1	SAFETY RACK WELDMENT	2-2478
51	1	HANDLE HINGE	1-3696
52	1	RELEASE HANDLE	2-2651
53	1	RUBBER GRIP HANDLE	6-3862
54	1	ROLL PIN, 1/8" X 1"	6-0437
55	2	HEX HD BOLT 1/4-20 UNC x 1" LG	6-0008
56	2FT	POLYTUBE, 3/8"	8-0142

11.0 Air / Hydraulic Pump Exploded View



12.0 Air / Hydraulic Pump Parts List

ITEM	QTY.	DESCRIPTION	PART #
1	1	RESEVOIR CAP ASSEMBLY	6-3348
2	1	RELEASE GUIDE ASSEMBLY	6-3349
3	1	FLOW RESTRICTOR ASSEMBLY	6-3350
4	1	COUPLER ASSEMBLY	6-3351
5	1	COUPLING V-RETAINER	6-3352
6	1	PLUNGER & SPRING KIT	6-3353
7	1	HYDRAULIC CYLINDER ASSEMBLY	6-3354
8	1	AIR PISTON ASSEMBLY	6-3355
9	1	AIR MOTOR ASSEMBLY	6-3356
10	1	COUPLER KIT	6-3357
12	1	RELIEF VALVE ASSEMBLY	6-3865
13	1	BASE	6-3360
14	1	RESERVOIR	6-3361
15	1	POPPET GUIDE ASSEMBLY	6-3365
16	1	BOOT	6-3368
17	1	HANDLE	6-3366
18	1	RUBBER SLEEVE	6-3367

** Plunger is included in both kits 6-3353 and 6-3354.

