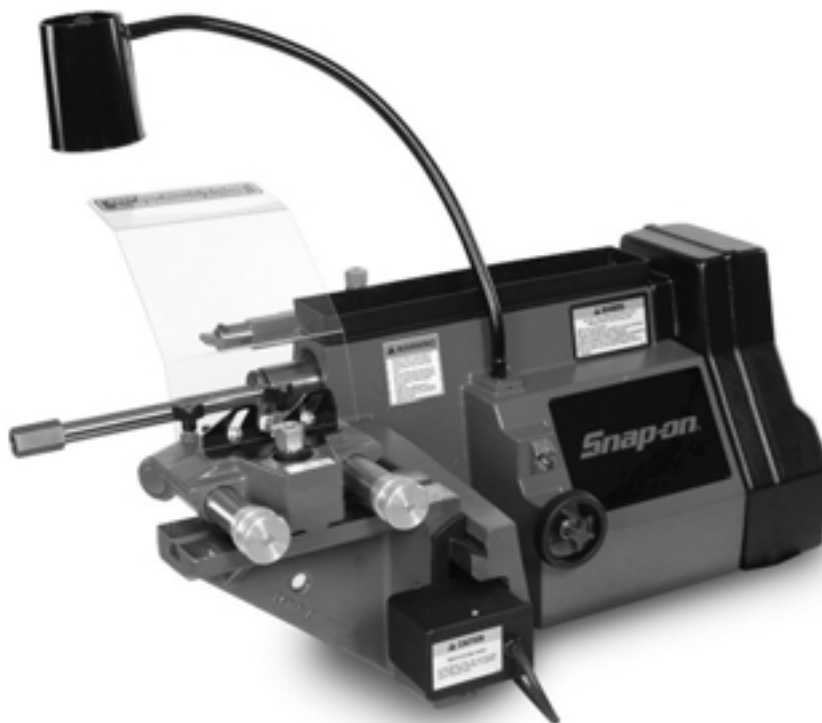


# ***Snap-on***<sup>®</sup>

## **EEBR308A Brake Lathes**



### ***Parts Identification***

READ these instructions before placing unit in service. KEEP these and other materials delivered with the unit in a binder near the machine for ease of reference by supervisors and operators.

***Snap-on***<sup>®</sup>

# Parts Identification

## Spindle Drive Assembly

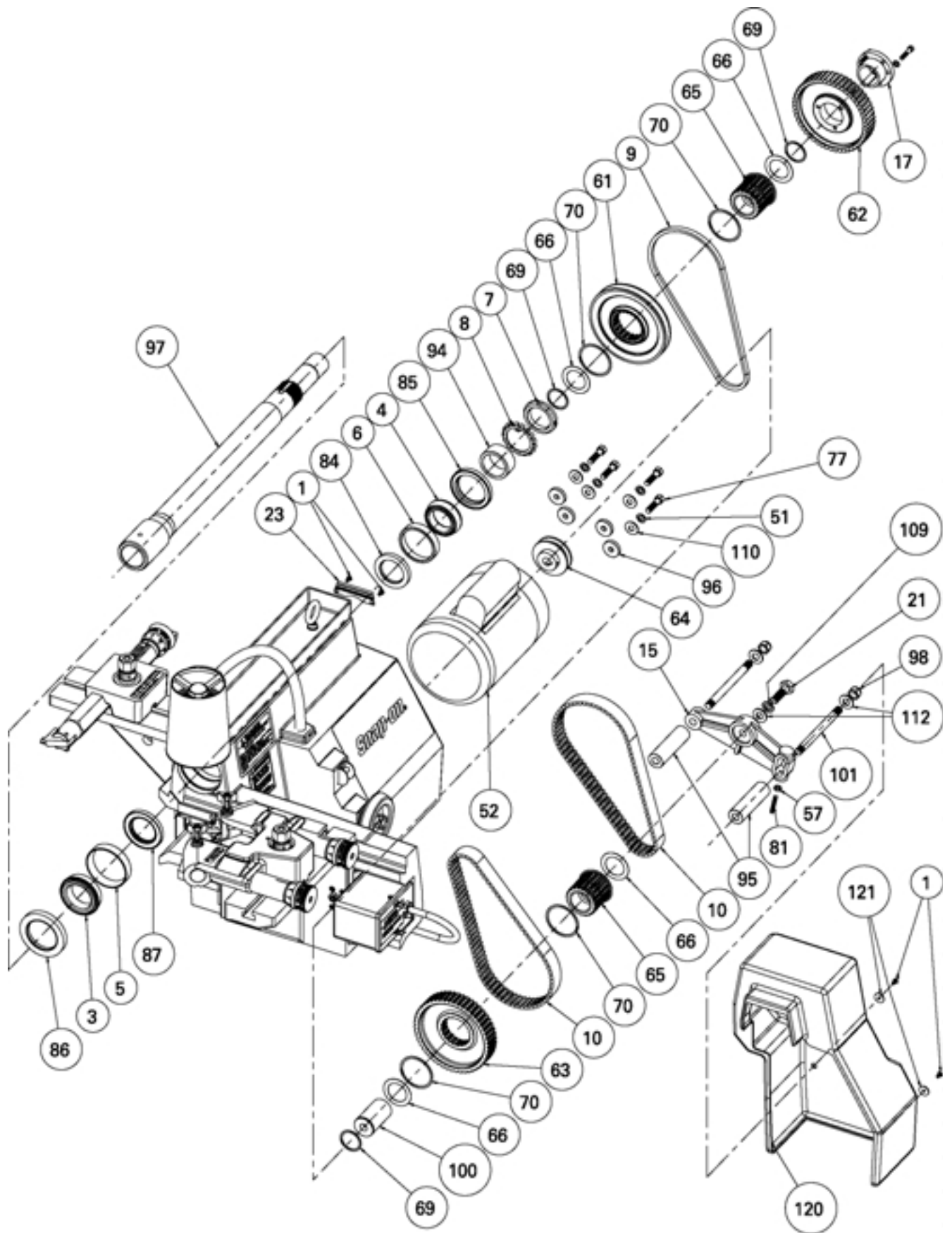
Item Qty.	Kit/Part	Description	Item Qty.	Part	Description
<b>P/N 941158GP Seals Back</b>					
84	1	Seal-Inside	1	4 92475910GP	B.H.C.S. 10-24 x .38 (10 pack)
85	1	Seal-Outside	9	1 925747GP	"V" Belt
<b>P/N 941159GP Seal Front</b>					
87	1	Seal-Inside	10	2 925746GP	Timing Belt
86	1	Seal-Outside	15	1 925744GP	Idler Bracket
<b>P/N 941160GP Bearing Front</b>					
3	1	Bearing	17	1 925717GP	QD Bushing
5	1	Bearing	23	1 926056GP	Clip
<b>P/N 941161GP Bearing Rear</b>					
4	1	Bearing	57	1 90352810GP	1/4-20 Hex Jam Nut (10 pack)
6	1	Bearing	62	1 925728GP	Drive Gear Pulley
<b>P/N 941162GP Pulley Bearing Assy. Kit</b>					
70	2	Ring-Retaining	64	1 925799GP	Motor Pulley
65	1	Pulley Bearing Assy.	69	3 92571310GP	Retaining Ring (10 pack)
61	1	Pulley	94	1 925727GP	Seal Bearing Spacer
66	2	Race-Thrust	95	2 925797GP	Idler Spacer
<b>P/N 941163GP Pulley Kit</b>					
63	1	Pulley-Gear Idler	97	1 925718GP	Spindle
70	2	Ring-Retaining	98	2 90230910GP	Stop Nut (10 pack)
65	1	Pulley Bearing Assy.	100	1 925798GP	Idler Stub
66	2	Race-Thrust	101	2 925796GP	Idler Stud
<b>P/N 941165GP Motor Kit</b>					
52	1	Motor	120	1 925912GP	Belt Guard
96	4	Spacer			
<b>P/N 941213GP Locknut Kit</b>					
7	1	Locknut Bearing			
8	1	Lockwasher Bearing Nut			

### Item Qty. Description

#### Standard Hardware Parts

21	1	1/2-13 x 1.50 HHCS
51	4	3/8 Std Lock Washer
77	4	3/8-16 x 1.50 HHCS
81	1	1/4-20 x 1.50 Long SHSS, Flat Point
109	1	1/2" Lock Washer, Helical Spring
110	4	3/8 Plain Washer
112	3	1/2" S.A.E. Std Flat Washer
121	2	0.203 ID x 0.734 OD x 0.063 THK Washer

# Parts Identification

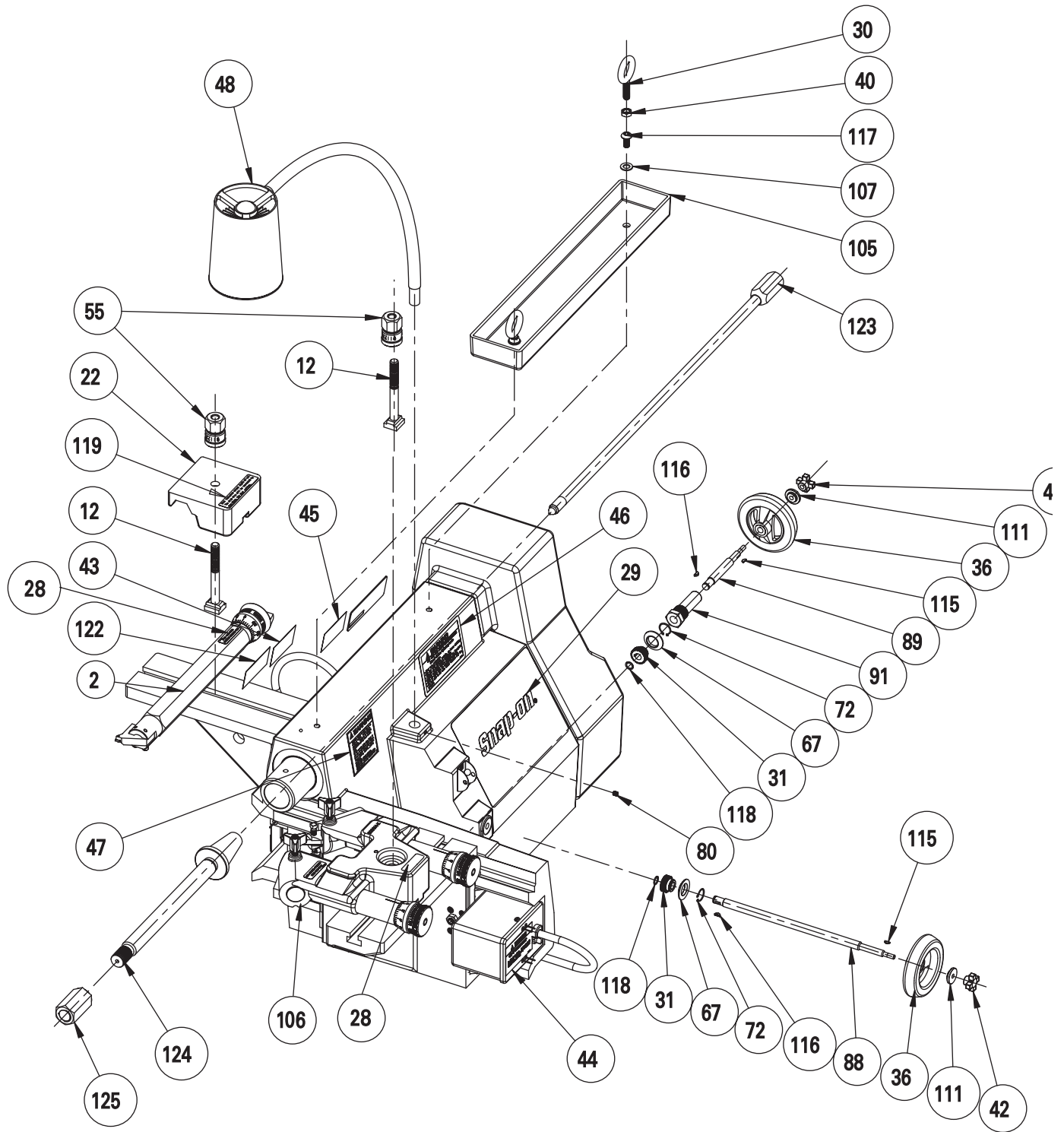


# Parts Identification

## Tool Bar Assembly, Feed Engagement Assemblies, and Lamp Assembly

Item Qty.	Kit/Part	Description	Item Qty.	Part	Description
<b>P/N 941152GP Feed Shaft Short</b>			2	1 941057GP	FCG Bar
91	1	Sleeve	12	2 941129GP	.500 x 4.5 Lg. Tee
31	1	Gear-Feed	22	1 920666-3GP	Clamp
89	1	Shaft-Feed	36	2 925765GP	Handwheel (Machined)
67	1	Retainer-Gear	42	2 925837GP	Knob
72	1	Ring-Retaining External	48	1 907963GP	Lamp Assembly
118	1	Ring-Retaining External	55	2 911227GP	Hex Nut Assembly
<b>P/N 941153GP Feed Shaft Long</b>			80	1 90021210GP	Cup Skt. Set Screw (10 pack)
31	1	Gear-Feed	105	1 941062GP	Tool Tray
88	1	Shaft-Feed	106	1 928819GP	Twin Cutter Assembly
67	1	Retainer-Gear	111	2 9258072GP	Thrust Washer
72	1	Ring-Retaining External	115	2 90697110GP	Woodruff Key (10 pack)
118	1	Ring-Retaining External	116	2 90697210GP	Woodruff Key (10 pack)
<b>P/N 941157GP Decal Kit</b>			123	1 925725GP	Drawbar
43	1	Decal-Caution	124	1 928577GP	Arbor
45	1	Label Fuse	125	1 903102GP	Nut
46	1	Label Warning	<b>Item Qty. Description</b>		
47	1	Label Warning	<b>Standard Hardware Parts</b>		
44	2	Label, Warning Shock	30	2 3/8-16 Eyebolt	
28	2	Decal Bits	40	2 3/8-16 Jam Nut	
119	1	Drum Decal	107	2 3/8 Flat Washer	
			117	2 3/8-16 x .75 BHCS Screw	

# Parts Identification

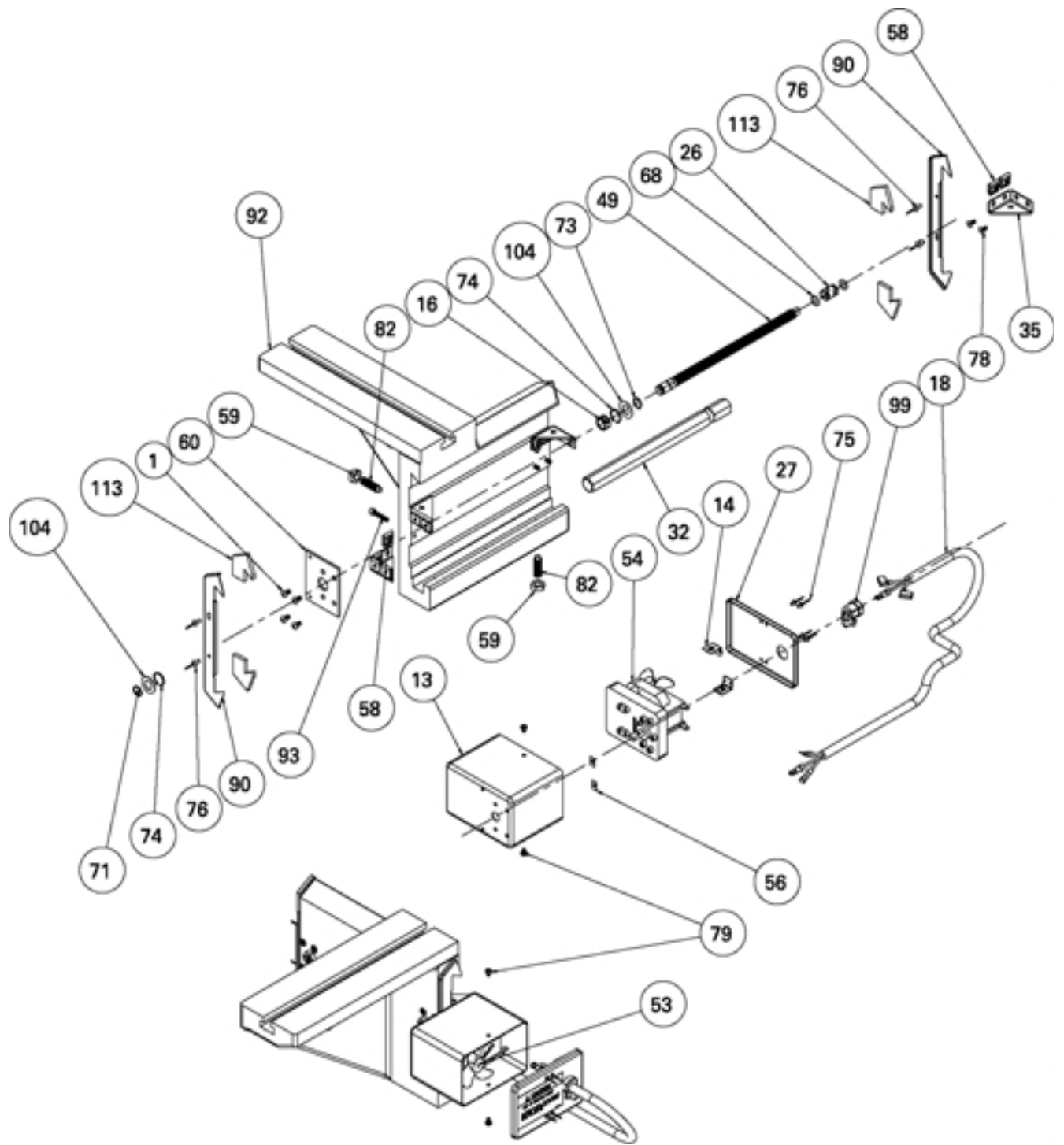


# Parts Identification

## Slide Assembly

Item Qty.	Kit/Part	Description	Item Qty.	Part	Description
<b>P/N 941154GP Coupler With O Ring</b>					
26	1	Coupler	13	2	926324GP Motor Box
68	2	Ring-O	18	2	925812GP Motor Cable
<b>P/N 941155GP Thrust Race &amp; Retaining Rings</b>					
73	1	Ring-Retaining External	32	2	925769GP Gib
16	1	Bushing	35	8	9257732GP Gusset (2 pack)
74	2	Ring-Retaining External	49	2	925766GP Lead Screw
104	2	Thrust Race	53	1	926321GP 4 RPM Gear Motor Rotor
71	1	Ring-Retaining	54	1	926322GP 6 RPM Gear Motor Drum
<b>P/N 941156GP Shield-Wiper Kit</b>					
76	2	Rivet	56	4	9257942GP Flat Nut
90	1	Shield-Wiper	58	24	92579110GP Speed Nut (10 pack)
<b>P/N 941166GP Set Screw &amp; Jam Nut</b>					
59	3	Nut-Jam, Hex, 3/8-24	60	2	925772GP End Plate
82	3	Set-Screw	92	2	925749GP Slide
<b>P/N 941207GP Motor Box Assembly Kit</b>					
13	1	Motor Box	99	2	921144GP Strain Relief
76	2	Rivet	113	8	9257718GP Wiper (8 pack)
90	1	Shield-Wiper	<b>Item Qty. Description</b>		
<b>P/N 941208GP Box Cover Assembly Kit</b>					
14	2	Angle Bracket	<b>Standard Hardware Parts</b>		
27	1	Box Cover	78	8	8-32 x 3/8 Hex SOC F.H. Screw
75	4	Rivet	79	4	8-18 x 0.250 SLTD Self Tap Screw
			93	16	10-24 x 1.000 SHCS

# Parts Identification



# Parts Identification

## Twin Cutter Assembly

Item Qty.	Kit/Part	Description	Item Qty.	Part	Description
<b>P/N 910650GP LH Tool Holder Kit (shown)</b>					
*	1	0.188 Dia. Groove Pin	1	4	906841GP 0.188 Dia. Groove Pin
*	1	5/16-18 Square Head Set Screw	2	2	90924925GP 5/16-18 Square Head Set Screw (25 pack)
29	1	LH Tool Holder	3	2	9176816GP Carbide Tip (6 pack)
<b>P/N 910651GP RH Tool Holder Kit (not shown)</b>					
*	1	0.188 Dia. Groove Pin	4	2	906907GP Micrometer Dial
*	1	5/16-18 Square Head Set Screw	5	2	941051GP Dial Plug
30	1	RH Tool Holder	6	2	906929GP Finger Spring Washer
<b>P/N 940559GP RH Tool Shank Kit (not shown)</b>					
*	1	Carbide Tip	7	2	906923GP Knob - Rod, Dial
*	1	Oval Head Undercut	9	2	941128GP Lock Screw
8	1	RH Tool Bit Shank	11	2	90352810GP 1/4-20 Jam Hex Nut (10 pack)
<b>P/N 940560GP LH Tool Shank Kit (shown)</b>					
*	1	Carbide Tip	12	2	90649910GP Oval Head Undercut (10 pack)
*	1	Oval Head Undercut	13	2	906977GP 1-inch Button Plug
14	1	LH Tool Bit Shank	15	2	941052GP Dial Rod
			16	2	909879GP Locating Screw
			17	2	906109GP Cone Point Set Screw
			18	2	903338GP CP Set Screw
			19	2	90690510GP Extension Spring (10 pack)
			22	2	928584GP Tool Holder Gib
			23	1	928814GP Twin Cutter Housing

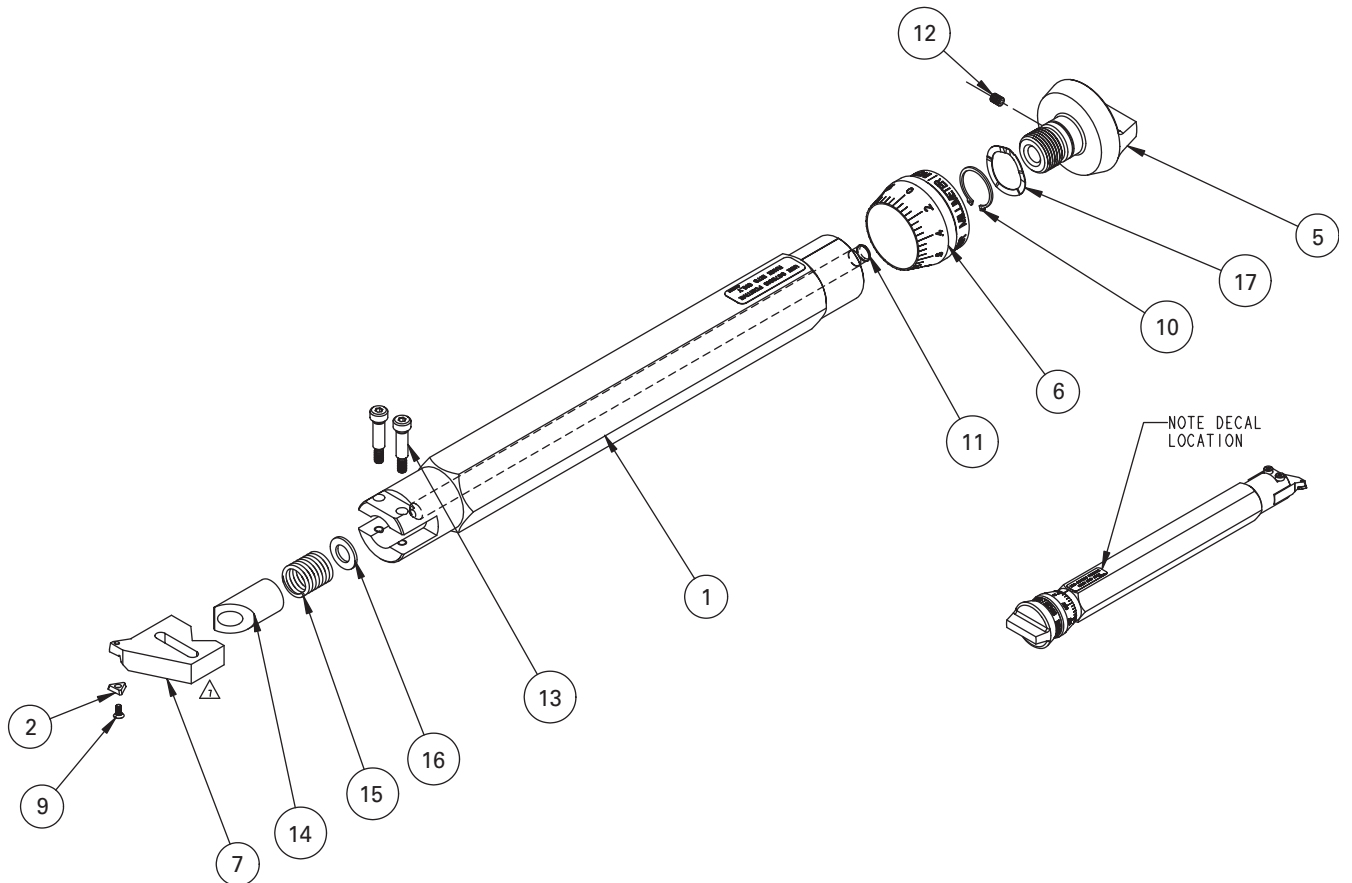
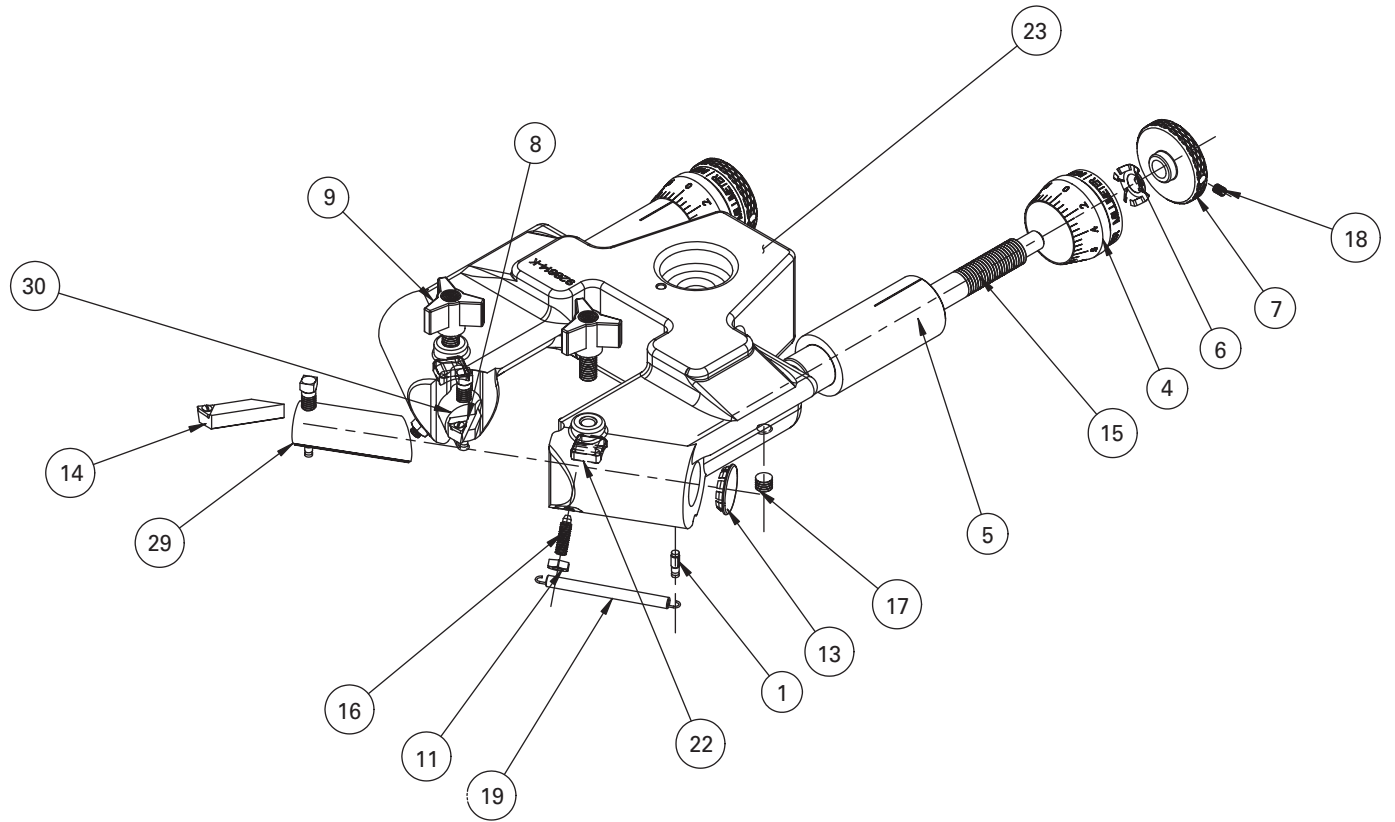
## Boring Bar Assembly

Item Qty.	Part	Description	Item Qty.	Description
1	1	925753GP Boring Bar	<b>Standard Hardware Parts</b>	
2	1	9076816GP Carbide Tip (6 pack)	16	1 3/8 Flat Washer Standard
5	1	925751GP Dial		
6	1	925752GP Micrometer Dial		
7	1	929018GP LH Holder		
9	1	90649910GP Oval Head Undercut (10 pack)		
10	1	92575910GP Ext Retaining Ring (10 pack)		
11	1	925755GP Dial Rod		
12	1	903338GP CP Set Screw		
13	2	925757GP Shoulder Screw		
14	1	925754GP Sleeve		
15	1	925756GP Compression Spring		
17	1	925758GP Wave Washer		

\* Assembled



# Parts Identification



# Parts Identification

## Wiring Diagram

<u>Item Qty.</u>	<u>Kit/Part</u>	<u>Description</u>	<u>Item Qty.</u>	<u>Part</u>	<u>Description</u>
<b><i>P/N 941164GP Terminal Board Kit</i></b>					
11	1	Board-Terminal	1	4	92475910GP B.H.C.S. 10-24 x .38 (10 pack)
41	2	Jumper	24	3	8150128GP Cable Box Connector
			25	1	925813GP LN Cord
			34	1	941170GP Switch Guard
			83	3	906824GP Fillister Slotted Screw
			102	1	906893GP Single Pole, On/Off Switch
			108	4	903910GP Ext Lk Washer
			114	1	925822GP Jumper Wire

### Item Qty. Description

#### ***Standard Hardware Parts***

20	2	Cable Clamp 5/8 dia.
37	2	Hanger 3/8 dia.
38	4	Hexagonal Nut #8-32
50	4	#8 Std. Lock Washer

# Parts Identification

