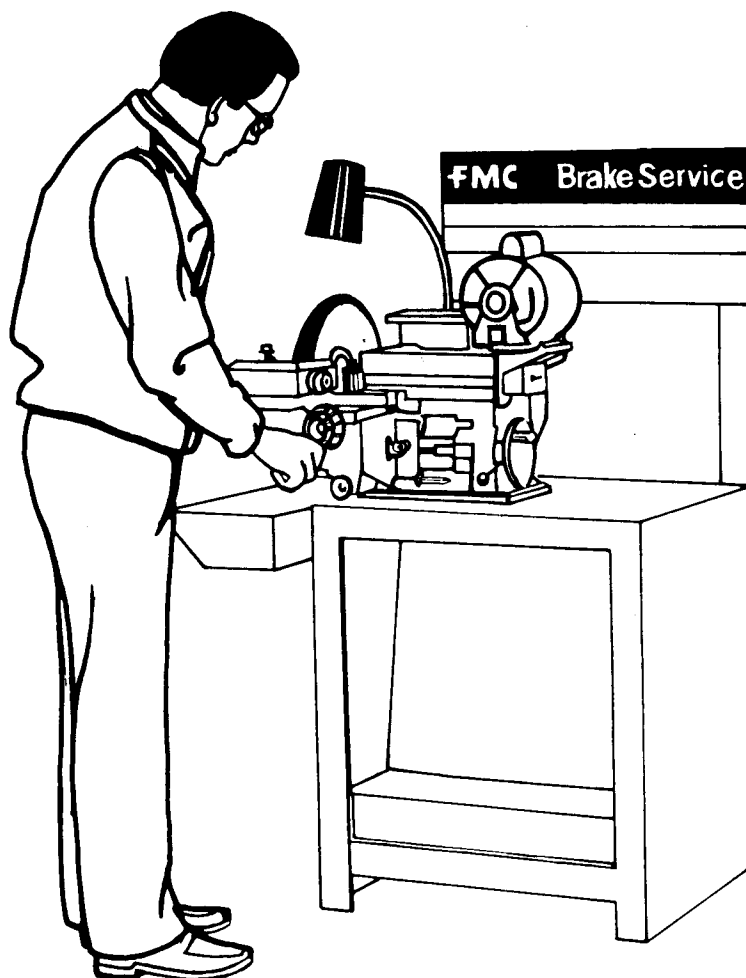


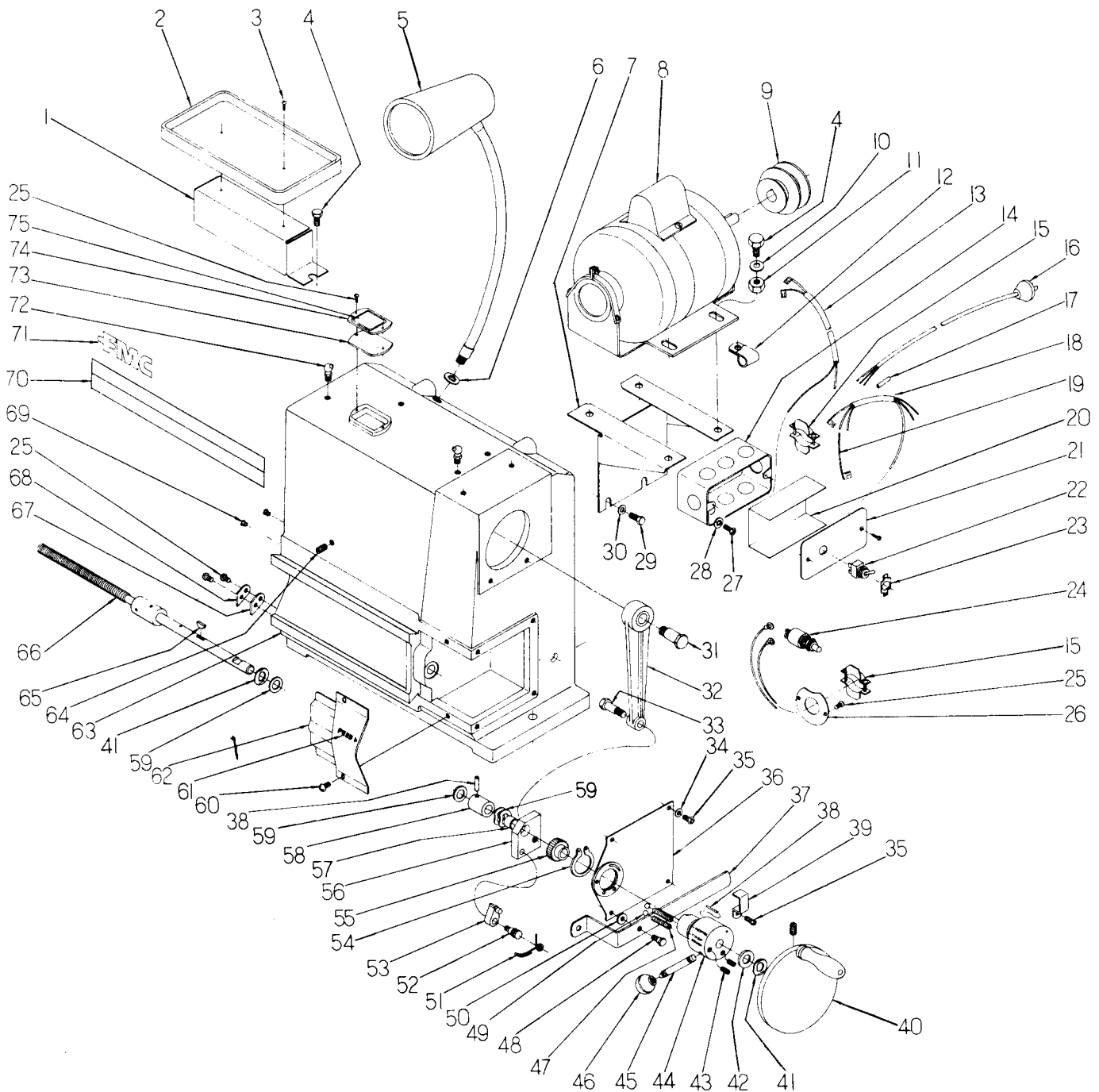
# Parts List

## B-400 Model Drum Lathe

Form No. 77-4100



**FIGURE 1—MAIN HOUSING GROUP**

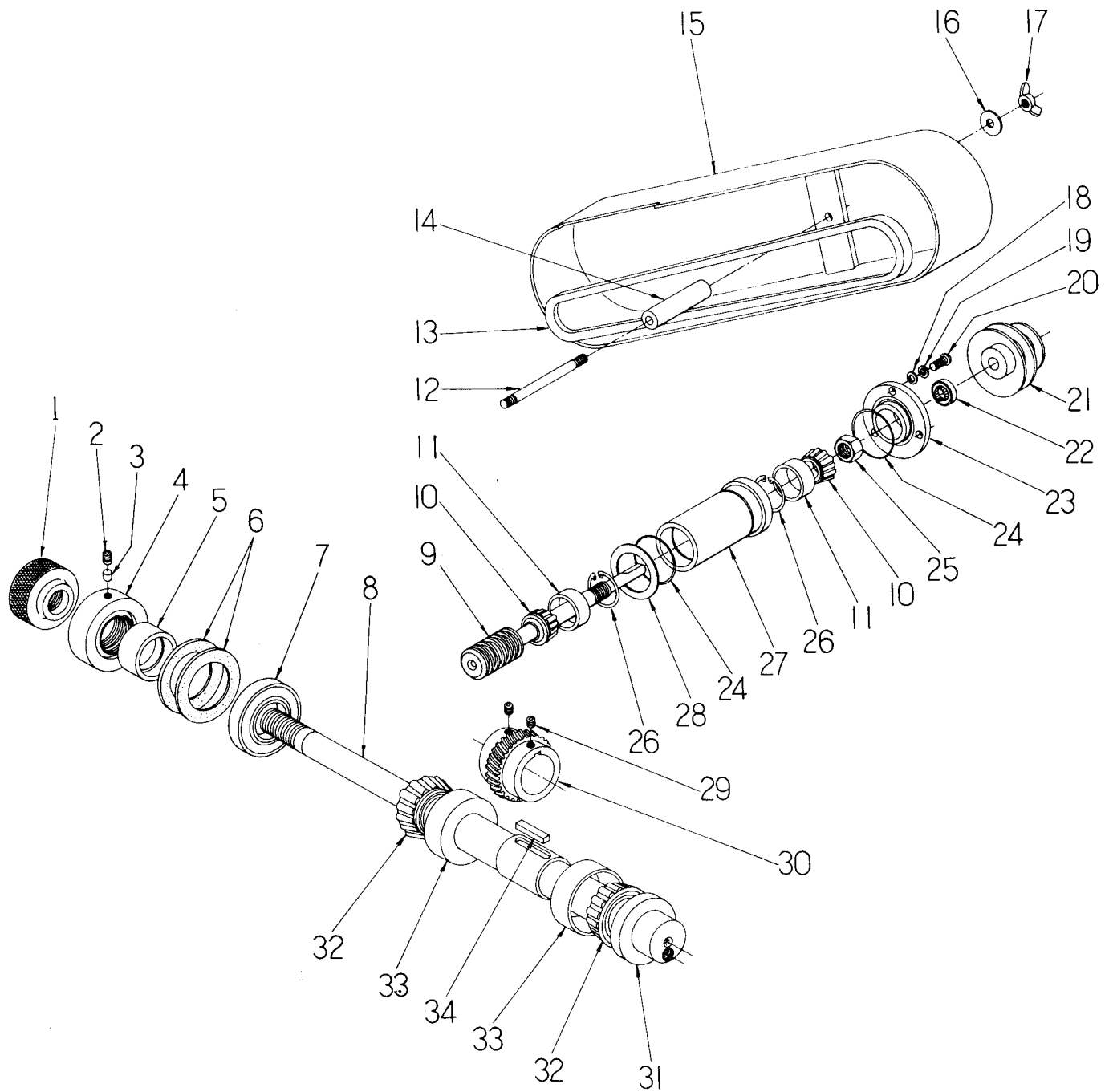


# FIGURE 1—MAIN HOUSING GROUP

Ref. No.	Part No.	Description
1	8026010	Tray Support
2	2012550	Tool Tray
3	1177910	Self Tap. Screw No. 8 x 1/2"
4	1106874	Capscrew, 5/16 - 8 x 3/4 long
5	2511339	Lamp Assembly (Consisting Of:) 7006200 Light Bulb, 4-W 7007633 Shade 7007634 Reflector 7007635 Grommet 7007636 Socket w-Switch & Knob
6	1104009	Washer-Lock 1/2 Int. Tooth
7	8026000	Motor Bracket
8	7501410	Motor, 1/2 h.p. - 1725RPM - 115 - 230 V60 Cycle
9	2011851	Two step pulley, 5/8" Bore
10	1100255	Plain Washer, 5/16 SAE
11	1182563	Hex Nut, 5/16 - 18
12	8027016	Clip, Cable
13	2511308	Wire Assy. Motor
14	7003780	Handy Box
15	7007460	Relief-Strain
16	17776	Cord & Plug Assy.
17	1177849	Splice-Insulated
18	2511309	Wire Assy. Switch
19	2511310	Wire Assy. Switch
20	57336	Insulator - Switch Box
21	7007618	Cover, Switch Plate
22	7007590	Switch
23	1206548	Plate, On-Off
24	7002991	Limit Switch
25	1110598	Rd. Hd. Mach. Screw No. 8 - 32x3/8"
26	8027015	Mtg. Plate, Connector
27	1102518	Rd. Hd. Mach. Screw No. 8 - 32 x 3/8 Brass
28	1103990	Washer - Int. Teeth No. 8
29	1106830	Capscrew, 1/4" - 20x1/2" Long
30	1107381	Plain Washer, 1/4
31	1013250	Cam Screw
32	2508641	Arm & Bearing Assy.
33	1013230	Ratchet Arm Screw
34	8019851	Washer, Cover Plate
35	1102518	Rd. Hd. Phillips Mach. Screw, No. 10-24 x 1/2" Long
36	2508621	End Cover Plate
37	8022580	Cut-Off Arm
38	1177683	Roll Pin, 5/32" x 3/4"
39	8022570	Support Bracket
40	2508650	Hand Wheel Assy. Includes the following: 1103475 Soc. Hd. Set Screw 5/16" x 3/4

Ref. No.	Part No.	Description
41	6002210	Wave Washer
42	8000390	Fibre Washer, 1/2" I.D. x 1/32" Thick
43	1177964	Set Screw, 1/4 - 28 x 1/8 (Mac-It)
44	1013271	Feed Selector Hub
45	1013260	Feed Selector Handle
46	8019960	Knob, Feed Selector
47	6002091	Selector Hub Spring
48	1015060	Shoulder Bolt
49	1177856	Steel Ball, 7/32 " Dia.
50	8022590	Rubber Washer
51	6002061	Ratchet Spring
52	1013220	Paul Pivot Pin
53	2011770	Ratchet Pawl
54	1113526	Retaining Spring
55	1013210	Ratchet Wheel
56	8027116	Pawl Mounting Plate
57	1101361	Bearing; Self-Lub.
58	1016830	Collar
59	6002487	Washer, Spring
60	1115795	Rd. Hd. Phillips Mach. Screw, No. 10-24 x 5/16" long
61	8019970	Decal "Feed"
62	8019820	Ratchet Cover Assembly
63	2013015	Housing, Lathe
64	1187817	Pipe Plug, 1/8" - Socket Head
65	1177640	Woodruff Key, No. 340
66	2511325	Feed Screw Assy. Consisting Of: 1016773 Feed Screw 1187961 Roll Pin
67	8009630	Gib Wiper
68	8009620	Gib Wiper Plate
69	8026890	Plug, Hole
70	8027262	Tape, Color Band
71	59081	Label, FMC Trademark
72	1100759	Grease Fitting
73	8025580	Seal, Cover
74	8025570	Cover
75	8027155	Label; Oil Level

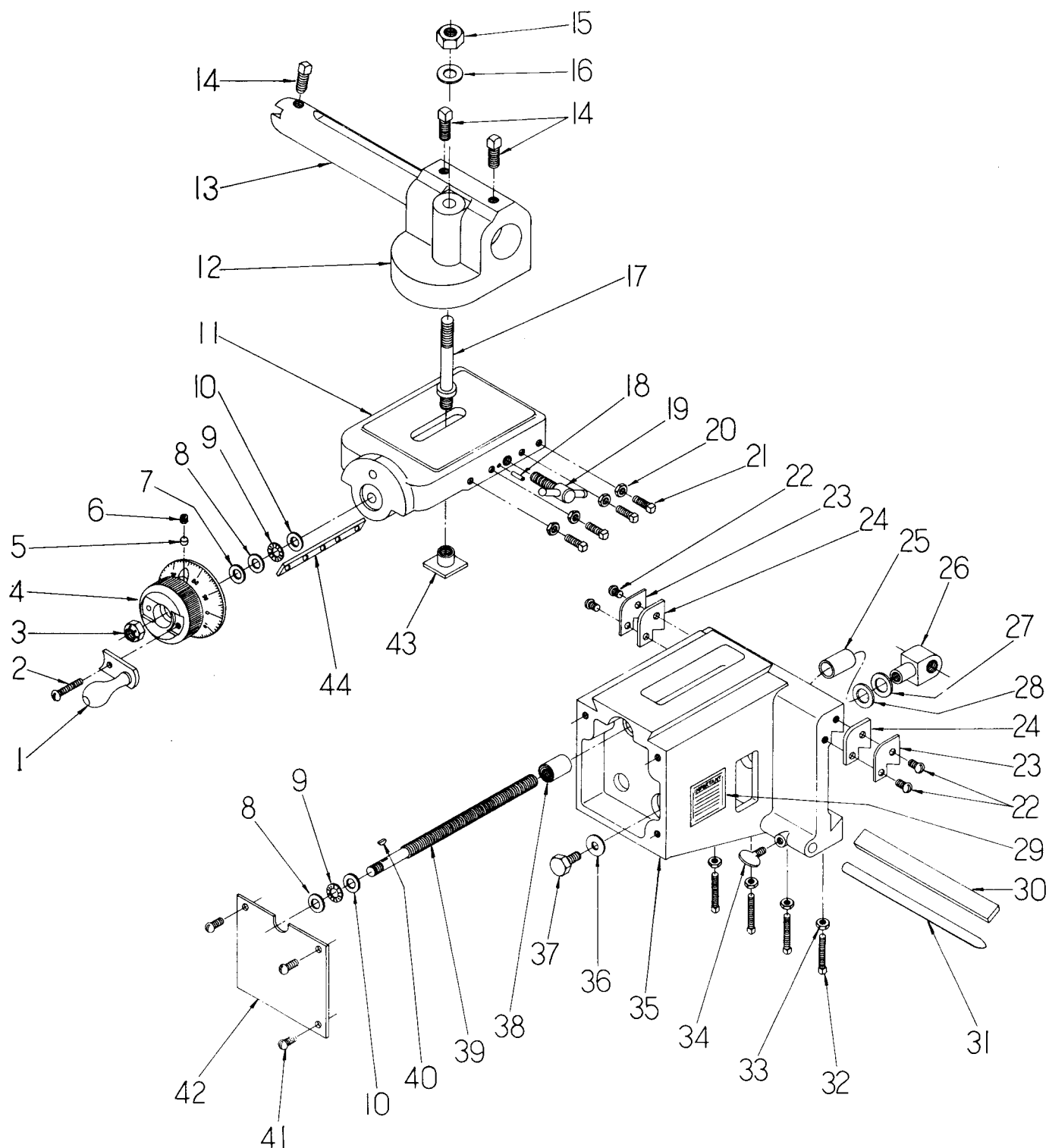
**FIGURE 2—SPINDLE & WORM SHAFT GROUP**



**FIGURE 2—SPINDLE & WORM SHAFT GROUP**

Ref. No.	Part No.	Description
1	1016659	Nut, Arbor
2	1103444	Soc. Hd. Set Screw, ¼" - 20 x ½"
3	8019069	Insert
4	1016661	Nut, Spindle Ret.
5	1016662	Spacer - Spindle Nut
6	5001131	Felt Spindle Seal, ⅜" Thick
7	1177745	Seal (Garlock 63 x 1207)
8	1013280	Spindle
9	1013291	Worm Shaft
10	1185181	Bearing Cone, Timken
11	1185182	Cup, Timken Bearing
12	1016260	Stud, Guard Mounting
13	1108465	Drive Belt
14	1016250	Spacer, Belt Guard
15	2012880	Guard, Belt
16	1107381	Plain Washer, 5/16" SAE
17	1110023	Wing, Nut, 5/16" - 18
18	1107381	Plain Washer
19	1187949	Internal Lock Washer
20	1118317	Screw
21	2011850	Two-Step Pulley, ½" Bore
22	1177854	Seal (Garlock 63 x 53)
23	2012730	Retainer, Oil Seal
24	1270345	"O" Ring
25	1177853	Nut, ⅝" - 18 Esna Light
26	1118729	Retaining Ring (Snap Ring)
27	2011730	Bearing Retainer
28	8027122	Washer - Anti - Friction
29	1110868	Soc. Hd. Set Screw, No. 10 - 24 x 3/16"
30	2011750	Worm Gear
31	1177332	Seal (Garlock 63 x 931)
32	1177744	Bearing Cone (Timken)
33	1104643	Cup, Timken Bearing
34	1104334	Key, 3/16" Sq. x 1¼" Lg.

**FIGURE 3—CROSS SLIDE CARRIAGE & TOOL POST GROUP**



**FIGURE 3—CROSS SLIDE CARRIAGE & TOOL POST GROUP**

Ref. No.	Part No.	Description
1	2511220	Crank Assembly
2	1177619	Button Hd. Screw, 1/4" - 20 x 1"
3	1177780	Lock Nut, 3/8" - 24
4	2012741	Dial Wheel
5	8019060	insert, Nylon
6	1103441	Set Screw 1/4 - 20 x 3/8"
7	8000360	Fibre Washer, 3/8" I.D. x 3/4" O.D. x 1/64
8	5001532	Race - Thrust
9	5001531	Bearing, Needle Thrust
10	5001533	Race - Thrust
11	2013027	Cross Slide
12	2011115	Tool Post Holder
13	1006691	Tool Post
14	1015540	Set Screw, 3/8" - 16 x 11/16" Sq. Hd.
15	1109285	Hex Nut, 1/2" SAE
16	1107385	Plain Washer, 1/2" SAE
17	1006511	Tool Post Pivot Pin
18	1177799	RollPin
19	2504540	Clamp Screw Assembly
20	1109765	Hex Nut, No. 8-32
21	1015560	Gib Screw, No. 8 - 32 x 7/8" Long
22	1110598	Rd. Hd. Mach. Screw. No. 8 - 32 x 3/8"

Ref. No.	Part No.	Description
23	8009560	Gib Wiper Plate
24	8009640	Gib Wiper
25	8027011	Spacer Feed Nut
26	1006700	Feed Nut
27	8011010	Fibre Washer, 5/8" I.D. x 1" O.D. x .032
28	8011000	Fibre Washer, 5/8" I.D. x 1" O.D. x .015
29	8017740	Instruction Decal
30	8009571	Carriage Gib
31	1015080	Feed Stop Rod
32	1015550	Gib Screw, No. 10-32 x 1-3/16" Long
33	1109845	Hex Nut, No. 10 - 32
34	1177323	Thumb Screw, 1/4 - 20 x 1/2" Long
35	2012900	Lathe Carriage
36	8027010	Special Washer
37	1106874	Capscrew, 5/16 - 18 x 3/4" Long
38	1006640	Bushing
39	1016440	Screw - Cross Feed
40	1177639	Woodruff Key, No. 204
41	1100118	Screw, 1/4" - 20 x 1/2"
42	8027012	Cover Plate
43	1016831	T-Nut
44	8019671	Cross Slide Gib

**STANDARD FACTORY WARRANTY**

We warrant that each piece of new Automotive Equipment will be free from defects in material and workmanship for ninety days (System Hofmann balancers and accessories only, for one hundred eighty days) under normal use and service. THE FOREGOING WARRANTY IS IN LIEU OF ALL OTHER WARRANTIES, EXPRESS OR IMPLIED, INCLUDING THOSE OF MERCHANTABILITY OR FITNESS FOR ANY PURPOSE NOT EXPRESSLY SET FORTH HEREIN. We do not warrant equipment and accessories, such as electric motors, lamps, switches, etc., manufactured by other companies, as they are usually warranted separately by their respective manufacturers.

Any cause of action for breach of the foregoing warranty must be brought within one year from the date the alleged

breach was discovered or should have been discovered, whichever occurs first.

Our liability for our products shall be limited to repairing or replacing parts found by us to be defective, or at our option, to refunding the purchase price of such products or parts. At our request, Buyer will send, at Buyer's expense, any allegedly defective parts to the plant which manufactured them.

**DISCLAIMER OF CONSEQUENTIAL DAMAGES**

Seller shall not be liable for consequential damages arising out of or in connection with its products. Consequential damages shall include, without limitation, loss of use, income, or profit, loss sustained as the result of injury (including death) to any person, or loss of or damage to property (including property handled, processed or tested by our products).



---

**Parts List**

**B-400 Model**

**Drum Lathe**

**Form No. 77-4100**

**FMC Corporation**  
Automotive Service Equipment Division  
Exchange Avenue  
Conway, Arkansas 72032  
(501) 327-4433  
Cable Autoserv Telex 53-6417