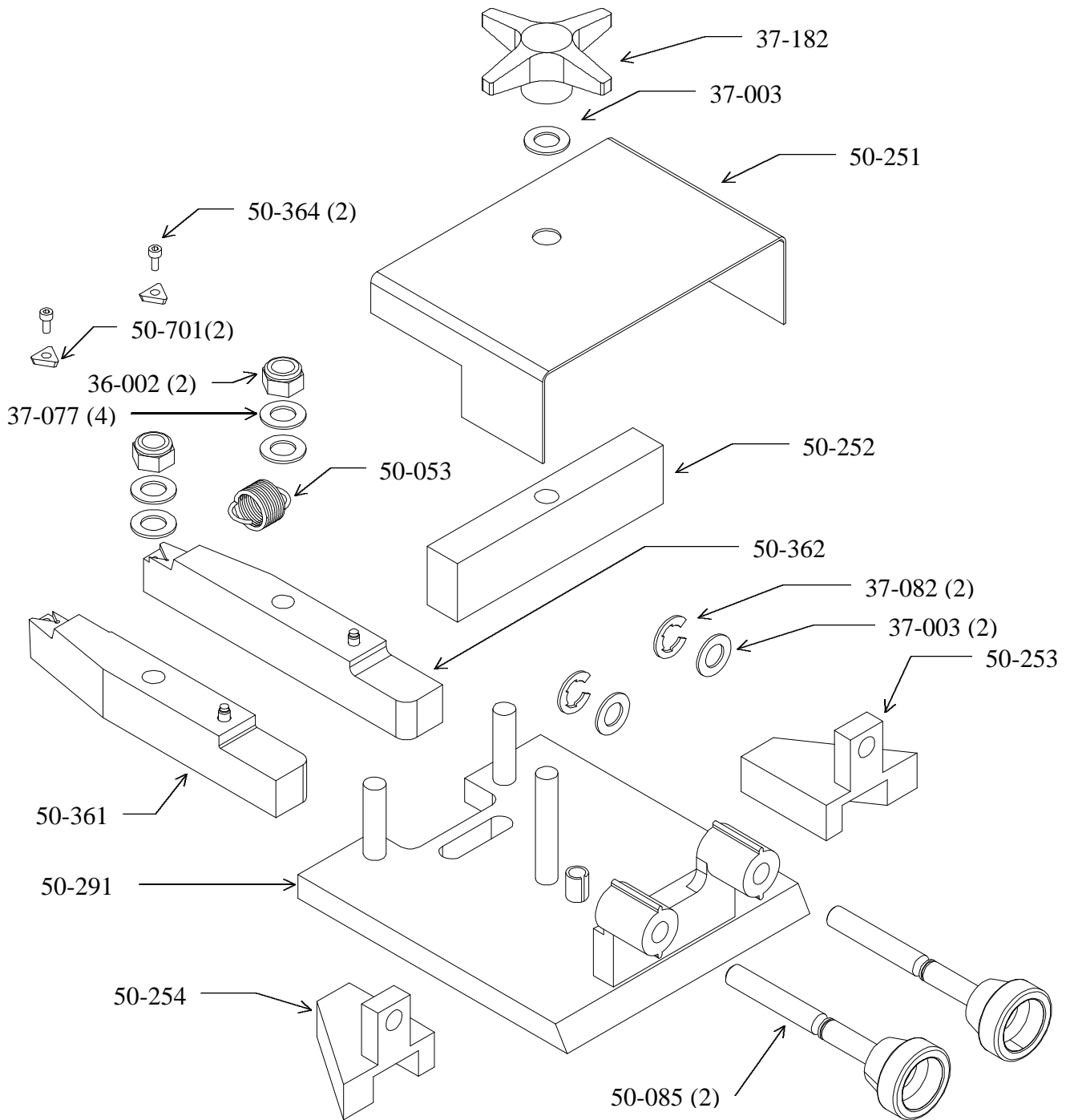


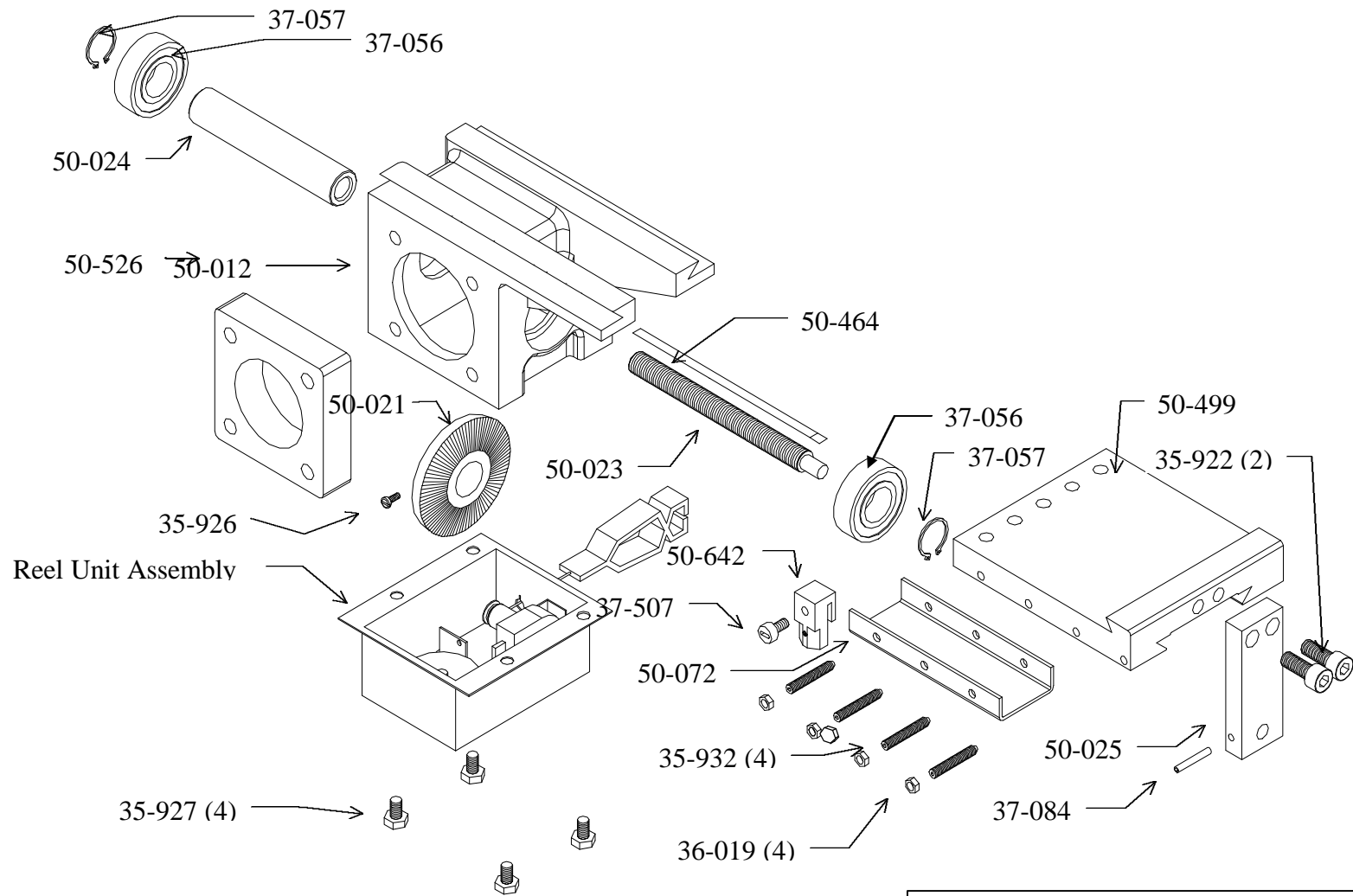
Special Instructions

When viewing this parts manual, you will see references to the “Pro-Cut” part numbers. In order to correctly identify these parts in the “EquiServ” parts system the part numbers will require minor changes i.e. The part number will be preceded by a “PC” identifier and all dashes are removed.

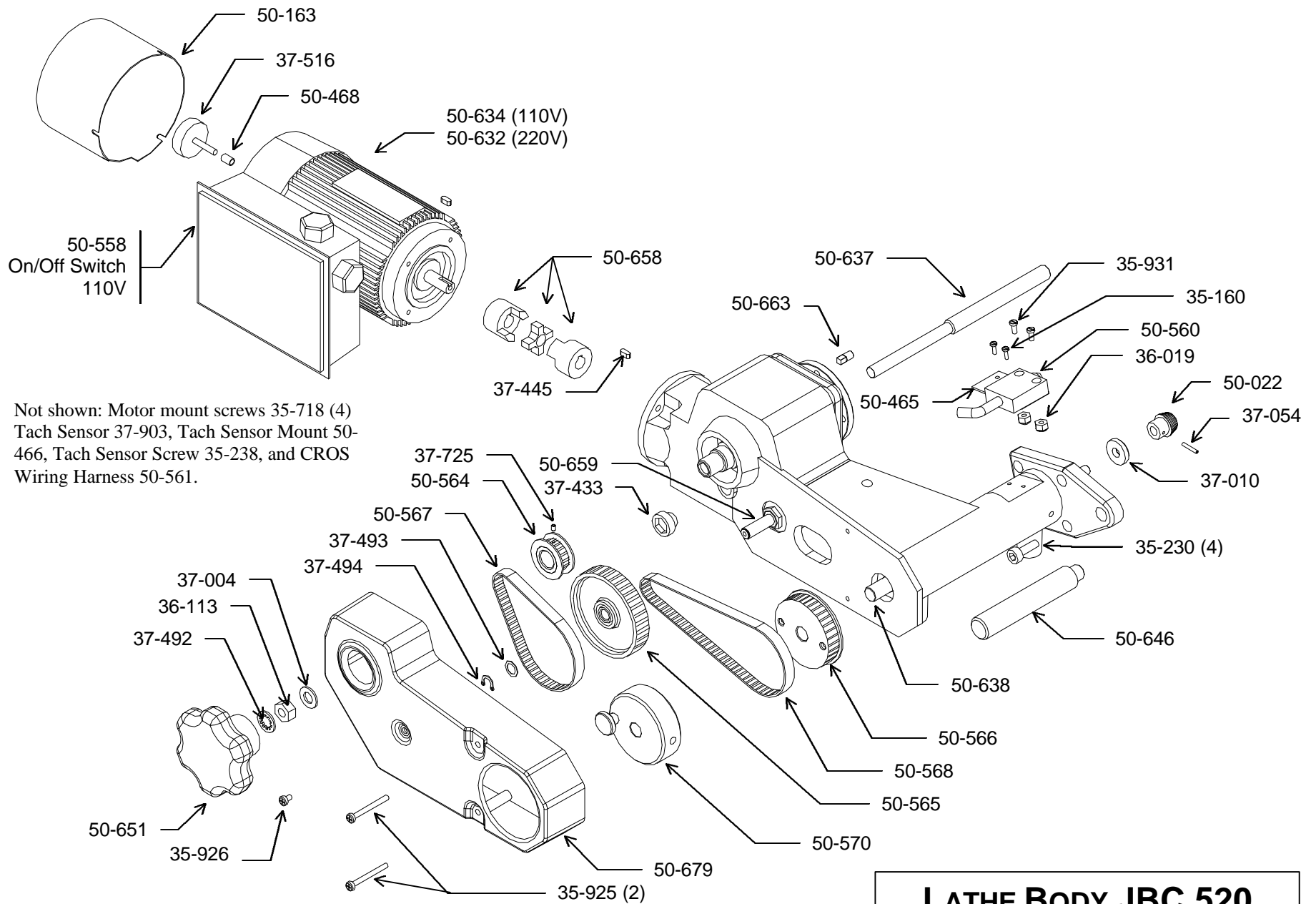
**Example Pro-Cut = 50-085
EquiServ = PC50085**



50-238 CUTTING HEAD

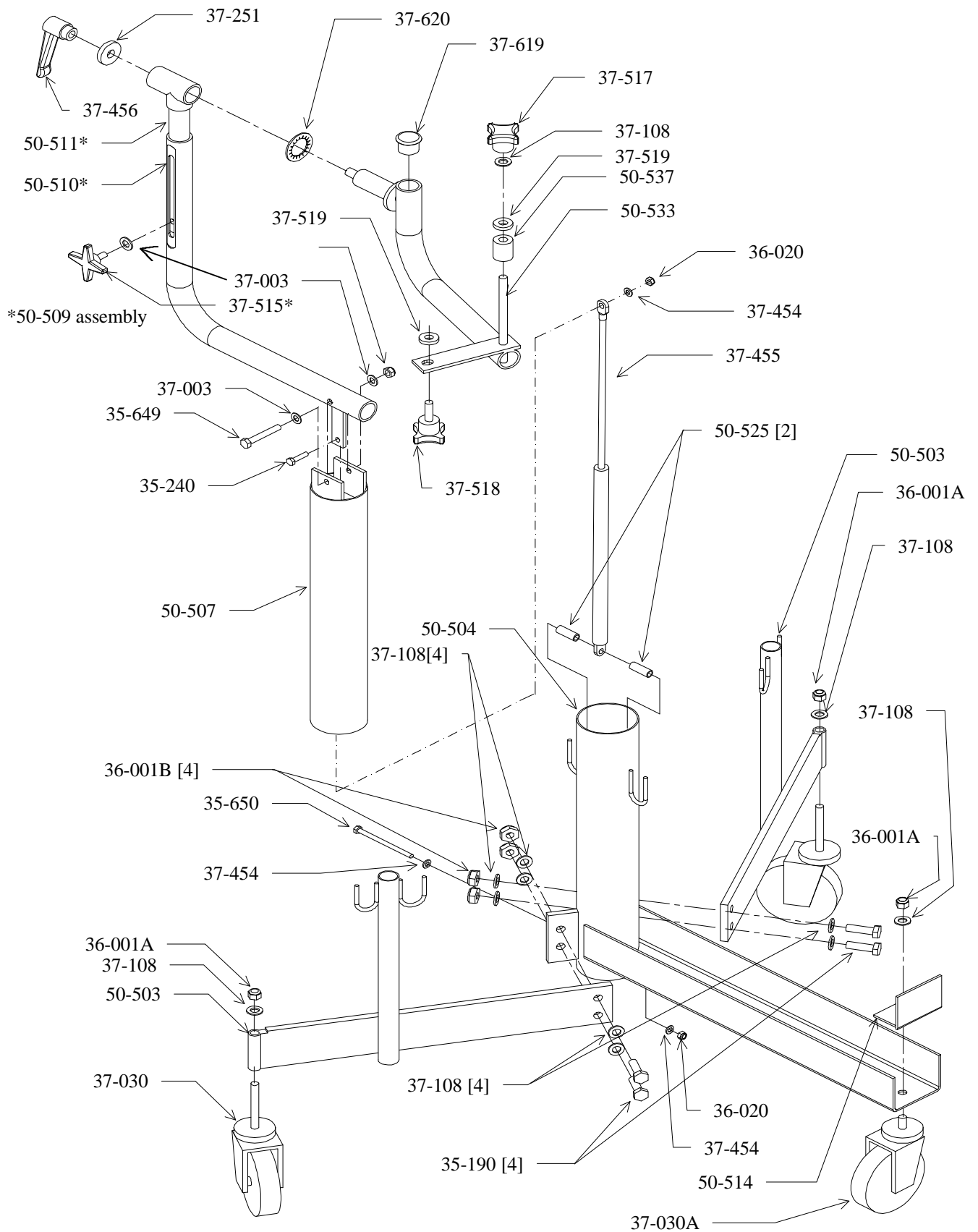


JBC 520 BEVEL GEAR

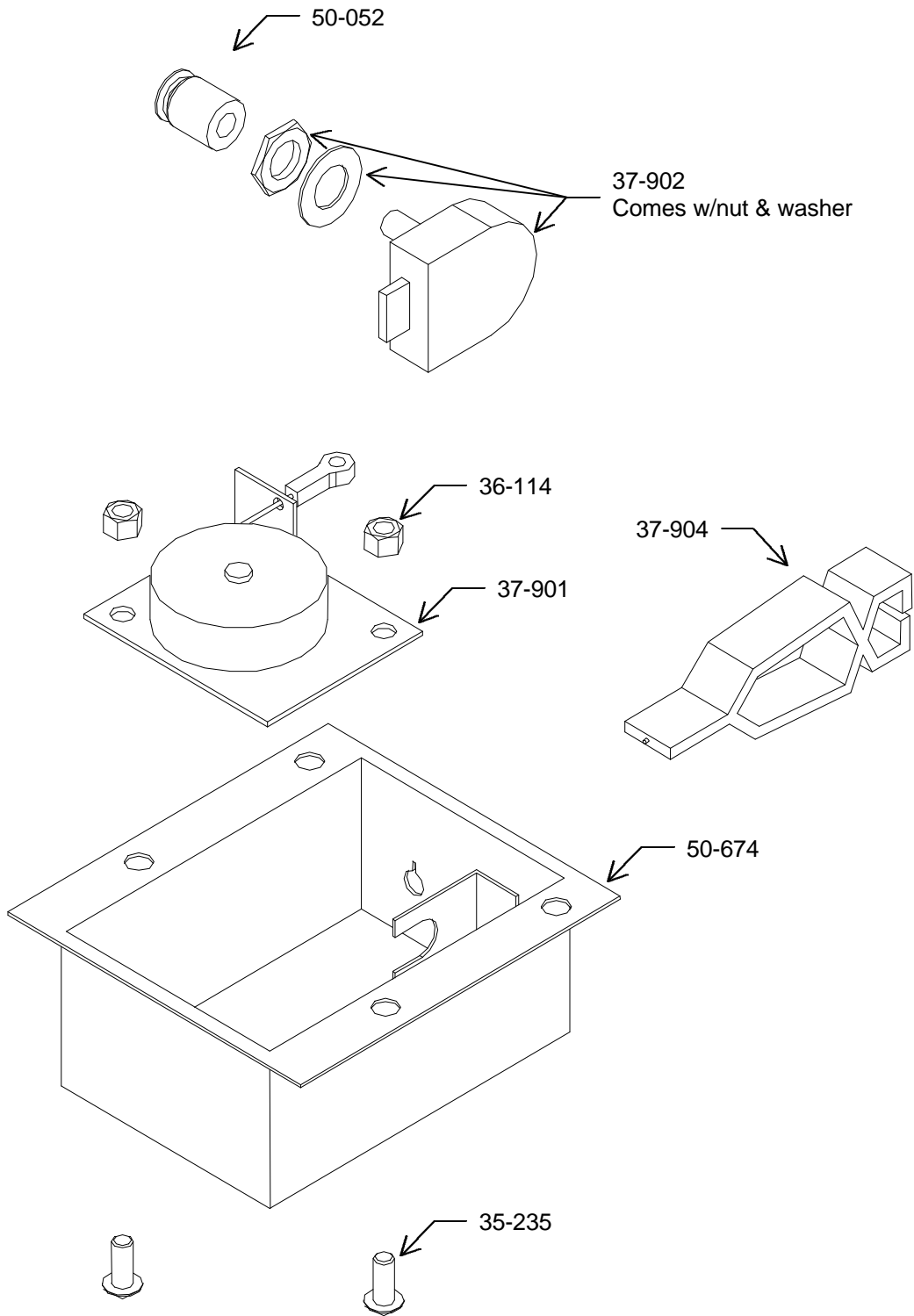


Not shown: Motor mount screws 35-718 (4)
Tach Sensor 37-903, Tach Sensor Mount 50-466,
Tach Sensor Screw 35-238, and CROS Wiring Harness 50-561.

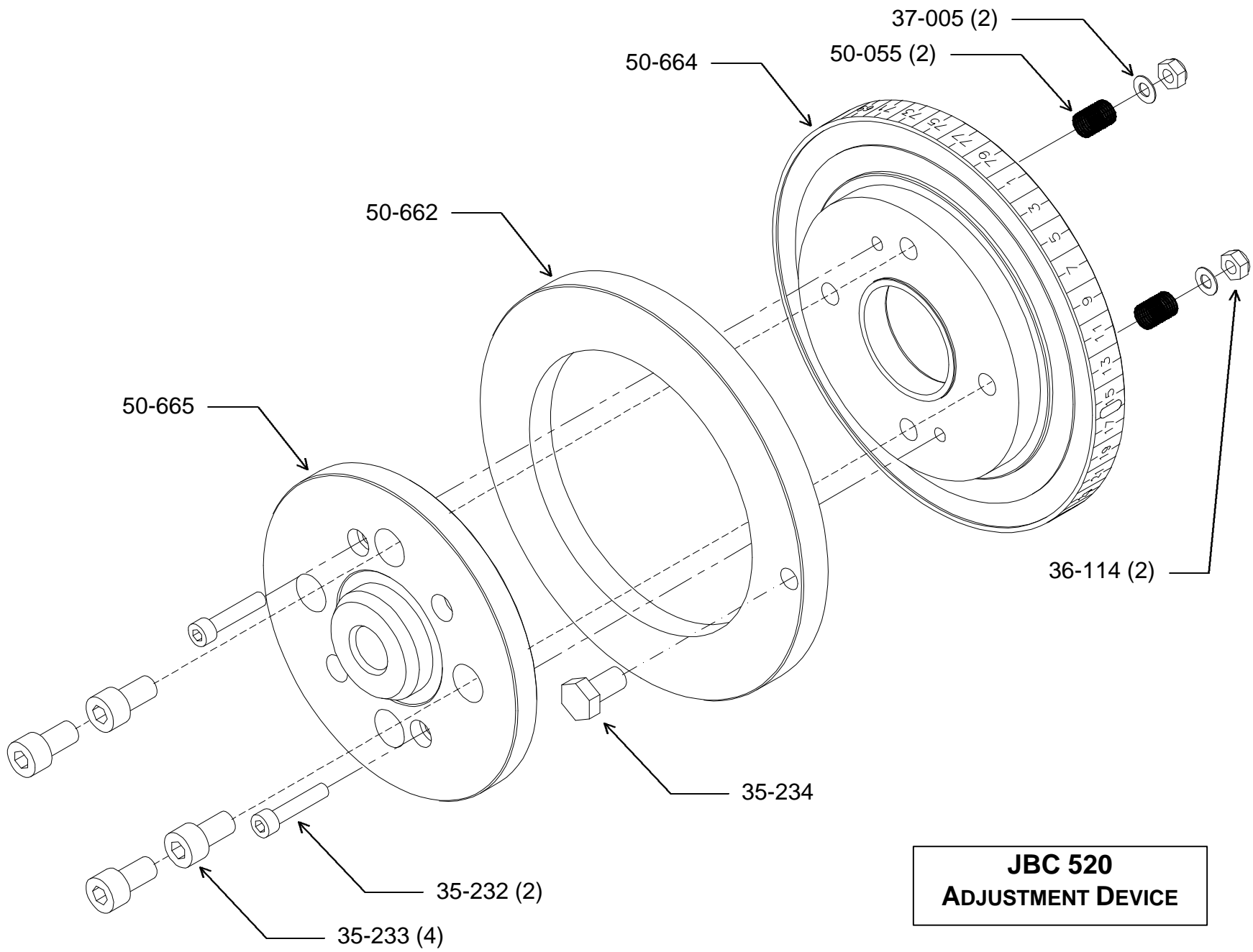
LATHE BODY JBC 520



LATHE TROLLEY



REEL UNIT ASSEMBLY JBC 520



**JBC 520
ADJUSTMENT DEVICE**