

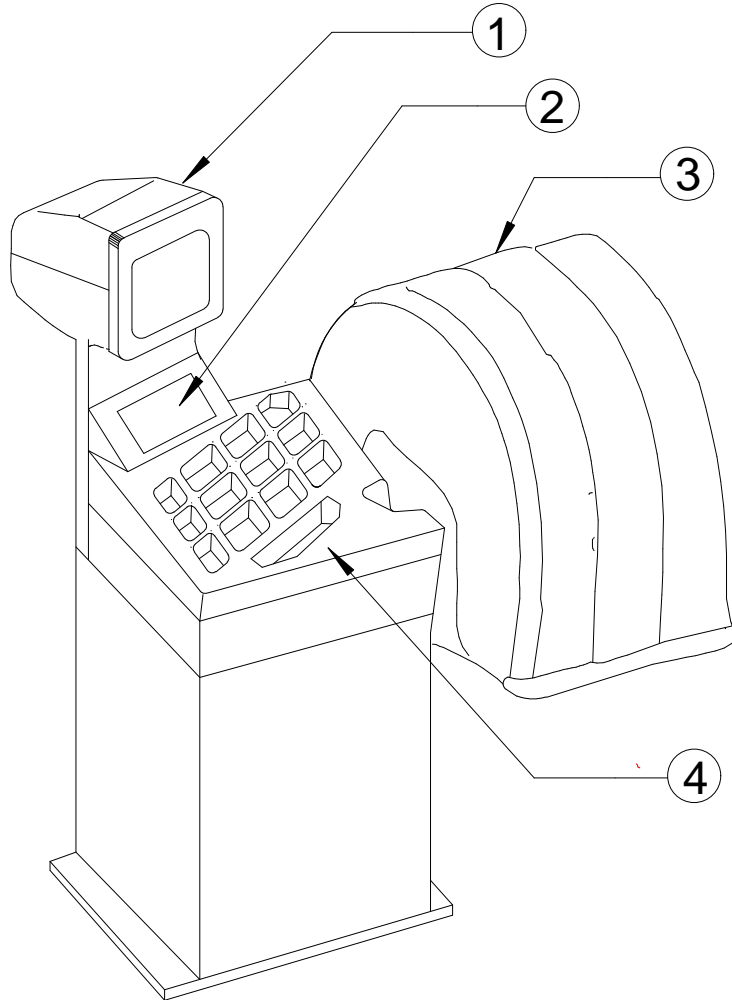
PARTS

SECTION I. GENERAL

This chapter describes assemblies/subassemblies/parts considered replaceable at on-site field installation.

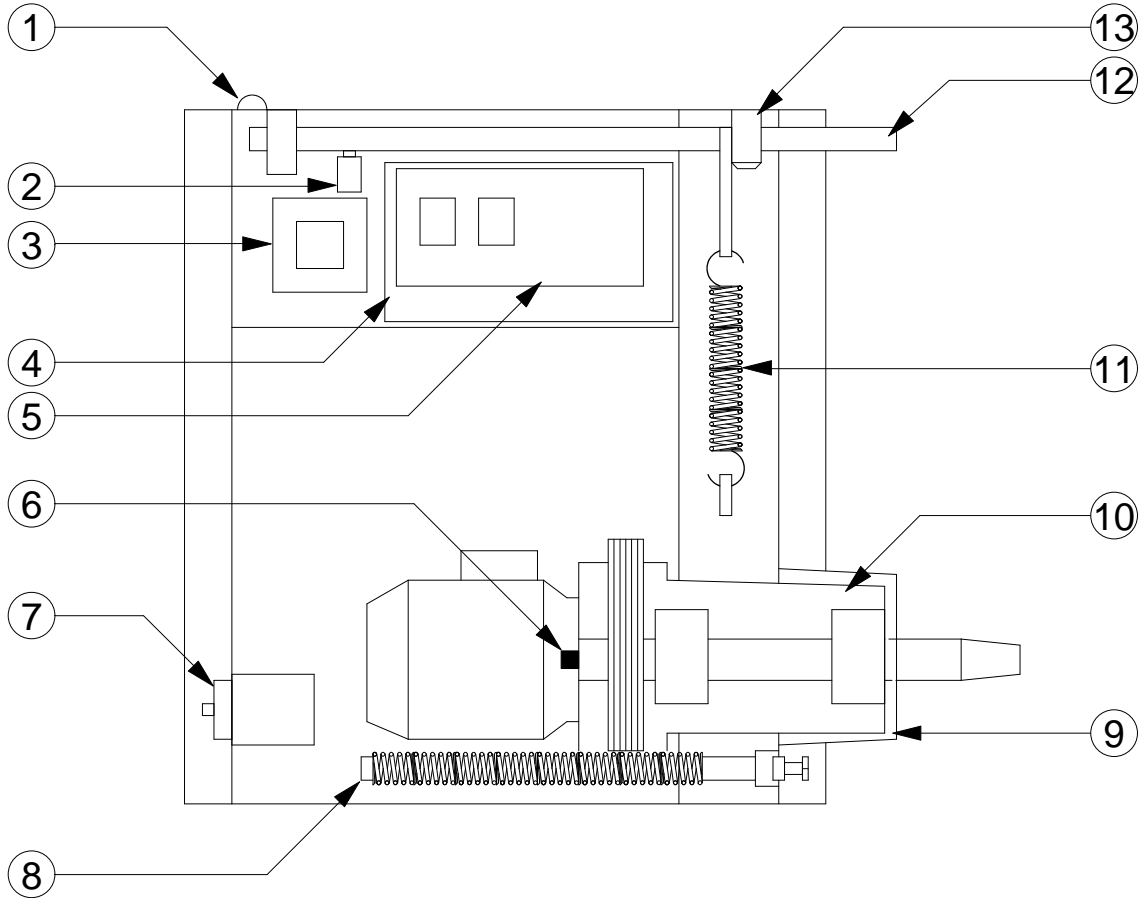
SECTION II. PARTS BY PICTORIAL

FRONT VIEW



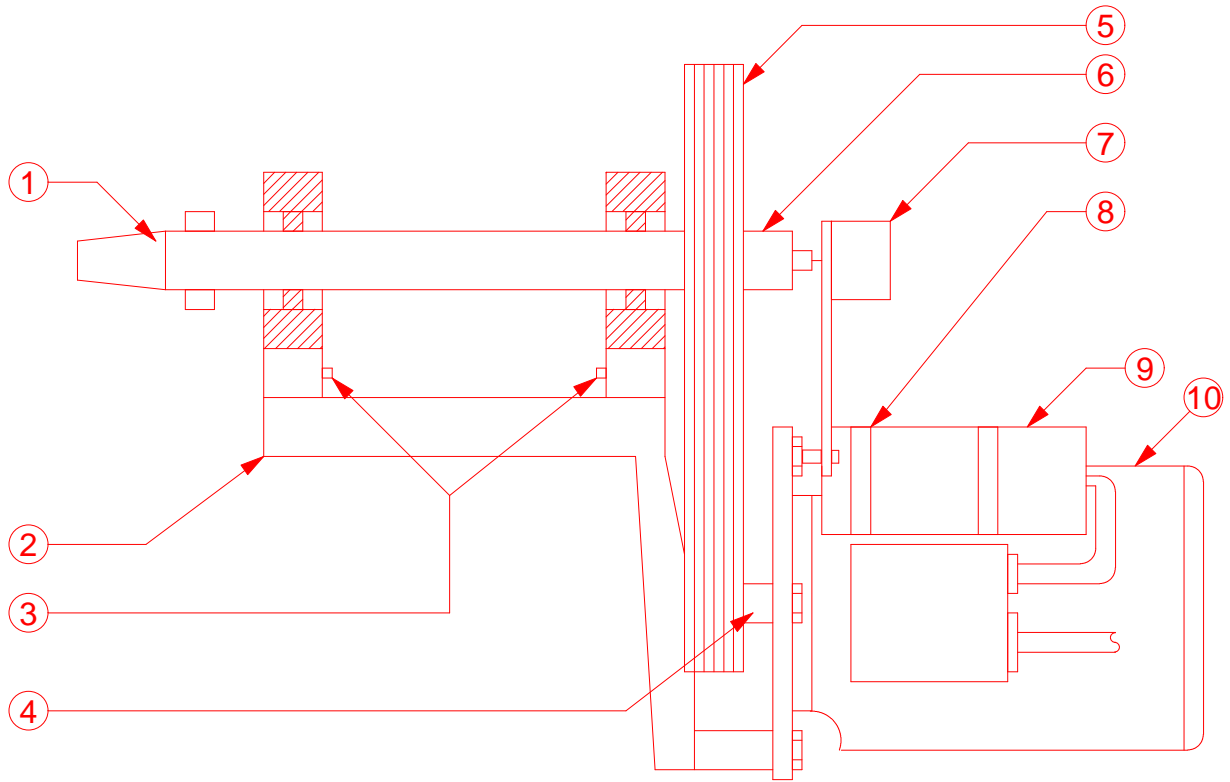
ITEM	DESCRIPTION	PART NUMBER	ITEM	DESCRIPTION	PART NUMBER
1	Monitor Assy.	931-551-005	2	Keypad Assy.	931-553-041
1a	Cable, Monitor	931-543-009	3	Hood Assy.	See Page 4
1b	Monitor Chassis	977-251-061	4	Weight Tray Assy.	931-525-002
1c	Board, Color Monitor	977-251-065			
1d	Board, Oscillator Monitor	977-251-066			

INSIDE TOP VIEW



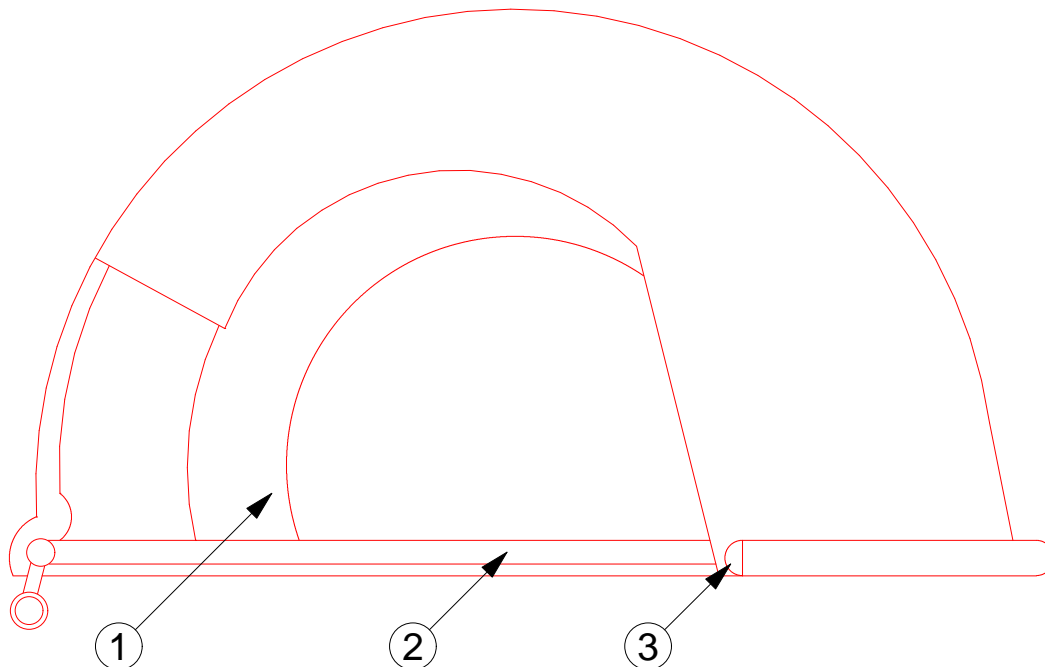
ITEM	DESCRIPTION	PART NUMBER	ITEM	DESCRIPTION	PART NUMBER
1	Bushing, AC Cable	974-205-070	10a	Weldment Assy. 110V	See Page 3
2	Switch, Hood Safety	977-171-036	10b	Weldment Assy. 220V	See Page 3
3	Transformer	931-552-008	11	Spring, Hood Tension	931-525-055
4	Board, CPU	931-543-013	12	Tube, Hood Mount	931-523-015
5a	Board, Motor Control 110V 1 phase	931-553-044	13a	Clamp, Hood Mount	931-525-050
5b	Board, Motor Control 220V 3 phase	931-553-006	13b	Bracket, Hood Support	931-525-020
6	Sensor, Optical Timing	931-501-029	NS	Cable, Inner Piezo	931-523-010
7	On/Off Switch	977-171-045	NS	Cable, Outer Piezo	931-523-011
8	Gauge, Distance Assy.	See Page 4	NS	Cable, Motor Control 110V 1 phase	931-553-049
9	Shaft Cover, Plastic	931-525-022	NS	Cable, Motor Control 220V 3 phase	931-553-024

WELDMENT ASSY.



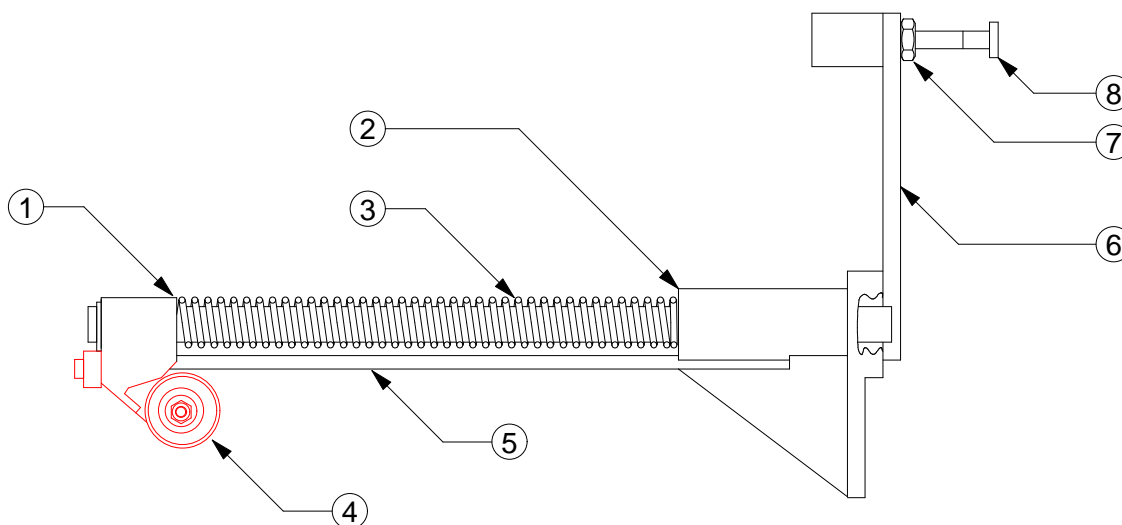
ITEM	DESCRIPTION	PART NUMBER	ITEM	DESCRIPTION	PART NUMBER
1	Shaft, Main	931-505-023	6	Pulley, Large	931-555-008
2	Casting, Base	931-505-022	7	Sensor, Optical Timing	931-501-029
3	Piezo	850-002-322	8	Clip, Retaining	974-205-022
4a	Pulley, Small 110V 1 phase	931-555-126	9	Capacitor, 110 μ fd	977-135-035
4b	Pulley, Small 220V 3 phase	931-555-010	10a	Motor, 60hz 110V 1 phase	977-251-046
5	Belts, Drive (6 needed)	931-555-032	10b	Motor, 60hz 220V 3 phase	977-251-039

**HOOD ASSY.
931-523-024**



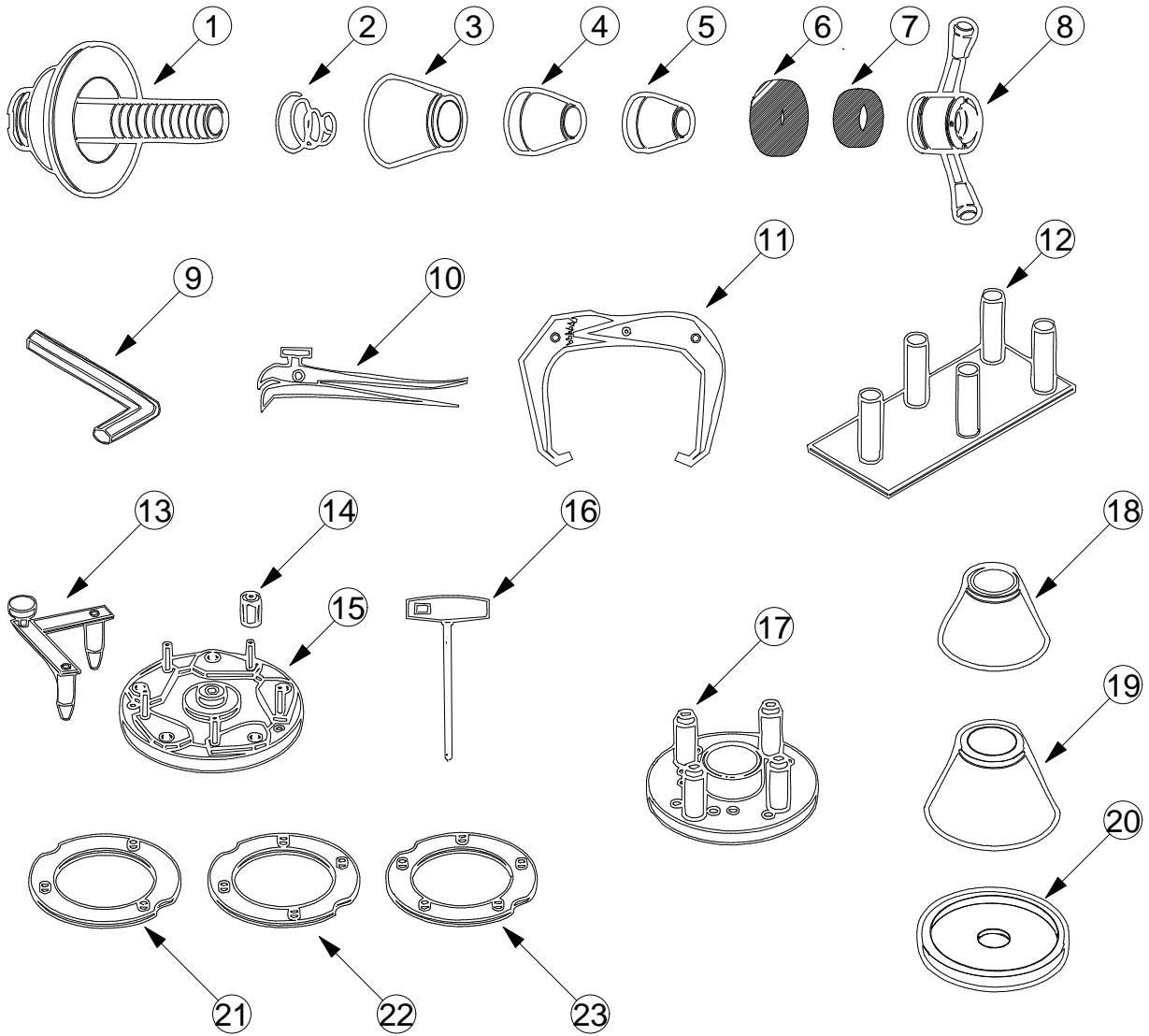
ITEM	DESCRIPTION	PART NUMBER	ITEM	DESCRIPTION	PART NUMBER
1	Hood, Safety	931-505-024	3	Cap, Tubing End	974-165-065
2	Frame, Hood	931-524-005			

**DISTANCE GAUGE ASSY.
931-542-001**



ITEM	DESCRIPTION	PART NUMBER	ITEM	DESCRIPTION	PART NUMBER
1	Mount, Potentiometer	931-545-017	5	Gear	931-545-018
2	Flange, Guide	931-545-016	6	Stop, Arm	931-555-058
3	Spring, Coil	860-001-310	7	Nut	975-110-018
4	Potentiometer	977-141-016	8	Screw	975-120-423

STANDARD & OPTIONAL ACCESSORIES



ITEM	DESCRIPTION	PART NUMBER	ITEM	DESCRIPTION	PART NUMBER
1	Arbor, Drive	931-145-059	13	Tool, Lug Measuring	931-145-050
2	Spring, Tension	931-145-032	14	Nut, Lug	931-145-047
3	Cone, Large 73 - 100mm; $2\frac{7}{8}$ - $3\frac{15}{16}$	931-145-124	15	Flange, Universal Drive	931-141-018
4	Cone, Medium 53 - 80mm; $2\frac{1}{8}$ - $3\frac{1}{8}$	931-145-122	16	Wrench, T-Handle Hex	931-145-001
5	Cone, Small 42 - 56mm; $1\frac{5}{8}$ - $2\frac{3}{16}$	931-145-121	17a	Plate, 4-Pin Flange	850-002-513
6	Hub & Ring, Drive	931-144-003	17b	Plate, 5-Pin Flange	850-002-514
7	Ring or Washer, Drive	931-144-002	18	Cone, Std. Truck 95 - 124mm; $3\frac{3}{4}$ - $4\frac{7}{8}$	931-142-002
8	Nut, Quick	931-142-004	19	Cone, Large Truck 122 - 170mm; $4\frac{13}{16}$ - $6\frac{11}{16}$	931-144-001
9	Wrench, Hex	931-145-060	20	Spacer, Truck	Part Of Item 19
10	Pliers, Weight	3300-0001-01	21	Plate, 3-Pin Indexing	931-145-048
11	Gauge, Width Caliper	7400-1177-02	22	Plate, 4-Pin Indexing	931-145-049
12	Rack, Accessory	931-704-001	23	Plate, 5-Pin Indexing	931-145-049
			NS	Flange, Motorcycle	931-141-004

SECTION III. PARTS IN ALPHABETICAL ORDER

DESCRIPTION	PART NUMBER
Arbor, Drive	931-145-059
Belts, Drive (6 needed)	931-555-032
Board, Color Monitor	977-251-065
Board, CPU	931-543-013
Board, Motor Control 110V 1 phase	931-553-044
Board, Motor Control 220V 3 phase	931-553-006
Board, Oscillator Monitor	977-251-066
Bracket, Hood Support	931-525-020
Bushing, AC Cable	974-205-070
Cable, Inner Piezo	931-523-010
Cable, Monitor	931-543-009
Cable, Motor Control 110V 1 phase	931-553-049
Cable, Motor Control 220V 3 phase	931-553-024
Cable, Outer Piezo	931-523-011
Cable, Potentiometer	931-553-027
Capacitor, 110 μ fd	977-135-035
Cap, Tubing End	974-165-065
Casting, Base	931-505-022
Clamp, Hood Mount	931-525-050
Clip, Retaining	974-205-022
Cone, Large 73 - 100mm; $2\frac{7}{8}$ - $3\frac{15}{16}$	931-145-124
Cone, Large Truck 122 - 170mm; $4\frac{13}{16}$ - $6\frac{11}{16}$	931-144-001
Cone, Medium 53 - 80mm; $2\frac{1}{8}$ - $3\frac{1}{8}$	931-145-122
Cone, Small 42 - 56mm; $1\frac{5}{8}$ - $2\frac{3}{16}$	931-145-121
Cone, Std. Truck 95 - 124mm; $3\frac{3}{4}$ - $4\frac{7}{8}$	931-142-002
Flange, Guide	931-545-016
Flange, Motorcycle	931-141-004
Flange, Universal Drive	931-141-018
Frame, Hood	931-524-005
Gauge, Distance Assy.	931-542-001
Gauge, Width Caliper	7400-1177-02
Gear	931-545-018
Hood Assy.	931-523-024
Hood, Safety	931-505-024
Hub & Ring, Drive	931-144-003
Keypad Assy.	931-553-041
Monitor Assy.	931-551-005
Monitor Chassis	977-251-061
Motor, 60hz 110V 1 phase	977-251-046
Motor, 60hz 220V 3 phase	977-251-039
Mount, Potentiometer	931-545-017
Nut	975-110-018
Nut, Lug	931-145-047
Nut, Quick	931-142-004
Nut, Standard	931-142-003
On/Off Switch	977-171-045
Optical Sensor Assy.	931-501-029
Piezo	850-002-322
Plate, 3-Pin Indexing	931-145-048
Plate, 4-Pin Flange	850-002-513
Plate, 4-Pin Indexing	931-145-049
Plate, 5-Pin Flange	850-002-514
Plate, 5-Pin Indexing	931-145-049
Pliers, Weight	3300-0001-01
Potentiometer	977-141-016
Pulley, Large	931-555-008
Pulley, Small 110V 1 phase	931-555-126
Pulley, Small 220V 3 phase	931-555-010

DESCRIPTION	PART NUMBER
Rack, Accessory	931-704-001
Ring or Washer, Drive	931-144-002
Screw	975-120-423
Sensor, Optical Timing	931-501-029
Shaft, Main	931-505-023
Shaft Cover, Plastic	931-525-022
Spacer, Truck	931-144-001
Spring, Coil	860-001-310
Spring, Hood Tension	931-525-055
Spring, Tension	931-145-032
Stop, Arm	931-555-058
Switch, Hood	977-171-036
Tool, Lug Measuring	931-145-050
Transformer	931-552-008
Tube, Hood Mount	931-523-015
Weight Tray Assy.	931-525-002
Wrench, Hex	931-145-060
Wrench, T-Handle Hex	931-145-001

SECTION IV. PARTS IN NUMERICAL ORDER

PART NUMBER	DESCRIPTION
3300-0001-01	Pliers, Weight
7400-1177-02	Gauge, Width Caliper
850-002-322	Piezo
850-002-513	Plate, 4-Pin Flange
850-002-514	Plate, 5-Pin Flange
860-001-310	Spring, Coil
931-141-004	Flange, Motorcycle
931-141-018	Flange, Universal Drive
931-142-002	Cone, Std. Truck 95 - 124mm; $3\frac{3}{4}$ - $4\frac{7}{8}$
931-142-003	Nut, Standard
931-142-004	Nut, Quick
931-144-001	Cone, Large Truck 122 - 170mm; $4\frac{13}{16}$ - $6\frac{11}{16}$
931-144-001	Spacer, Truck
931-144-002	Ring or Washer, Drive
931-144-003	Hub & Ring, Drive
931-145-001	Wrench, T-Handle Hex
931-145-032	Spring, Tension
931-145-047	Nut, Lug
931-145-048	Plate, 3-Pin Indexing
931-145-049	Plate, 4-Pin Indexing
931-145-049	Plate, 5-Pin Indexing
931-145-050	Tool, Lug Measuring
931-145-059	Arbor, Drive
931-145-060	Wrench, Hex
931-145-121	Cone, Small 42 - 56mm; $1\frac{5}{8}$ - $2\frac{3}{16}$
931-145-122	Cone, Medium 53 - 80mm; $2\frac{1}{8}$ - $3\frac{1}{8}$
931-145-124	Cone, Large 73 - 100mm; $2\frac{7}{8}$ - $3\frac{15}{16}$
931-501-029	Optical Sensor Assy.
931-501-029	Sensor, Optical Timing
931-505-022	Casting, Base
931-505-023	Shaft, Main
931-505-024	Switch, Hood Safety
931-523-010	Cable, Inner Piezo
931-523-011	Cable, Outer Piezo
931-523-015	Tube, Hood Mount
931-523-024	Hood Assy.
931-524-005	Frame, Hood
931-525-002	Weight Tray Assy.
931-525-020	Bracket, Hood Support
931-525-022	Shaft Cover, Plastic
931-525-050	Clamp, Hood Mount
931-525-055	Spring, Hood Tension
931-542-001	Gauge, Distance Assy.
931-543-009	Cable, Monitor
931-543-013	Board, CPU
931-545-016	Flange, Guide
931-545-017	Mount, Potentiometer
931-545-018	Gear
931-551-005	Monitor Assy.
931-552-008	Transformer
931-553-006	Board, Motor Control 220V 3 phase
931-553-024	Cable, Motor Control 220V 3 phase
931-553-027	Cable, Potentiometer
931-553-041	Keypad Assy.
931-553-044	Board, Motor Control 110V 1 phase
931-553-049	Cable, Motor Control 110V 1 phase
931-555-008	Pulley, Large
931-555-010	Pulley, Small 220V 3 phase

PART NUMBER	DESCRIPTION
931-555-032	Belts, Drive (6 needed)
931-555-058	Stop, Arm
931-555-126	Pulley, Small 110V 1 phase
931-704-001	Rack, Accessory
974-165-065	Cap, Tubing End
974-205-022	Clip, Retaining
974-205-070	Bushing, AC Cable
975-110-018	Nut
975-120-423	Screw
977-135-035	Capacitor, 110 μ fd
977-141-016	Potentiometer
977-171-036	Switch, Hood
977-171-045	On/Off Switch
977-251-039	Motor, 60hz 220V 3 phase
977-251-046	Motor, 60hz 110V 1 phase
977-251-061	Monitor Chassis
977-251-065	Board, Color Monitor
977-251-066	Board, Oscillator Monitor