

ILLUSTRATED PARTS BREAKDOWN/LIST

Figures 6, 7, and 8 contain illustrated parts breakdowns of the principal assemblies and sub-assemblies of the CWB-1742 Computer Wheel Balancer. Parts lists are keyed to the illustrations to permit ease of location of part and part number. The illustrations permit visualization of the removal sequence, and are referenced in the Adjustment Procedure section page 12.

Parts with numbers beginning 7000-XXXX or 7098-XXXX and above are Sun designed and

tested parts and must be ordered from Sun for replacement. Parts with numbers beginning 6999-XXXX and below are Sun specified and tested parts and should be ordered from Sun for best performance after replacement. Parts without numbers and certain numbered parts such as cable ties, grommets, and fasteners should be obtained locally.

Sub-assemblies and parts are available as shown and listed. Individual parts of sub-assemblies are not available unless listed.

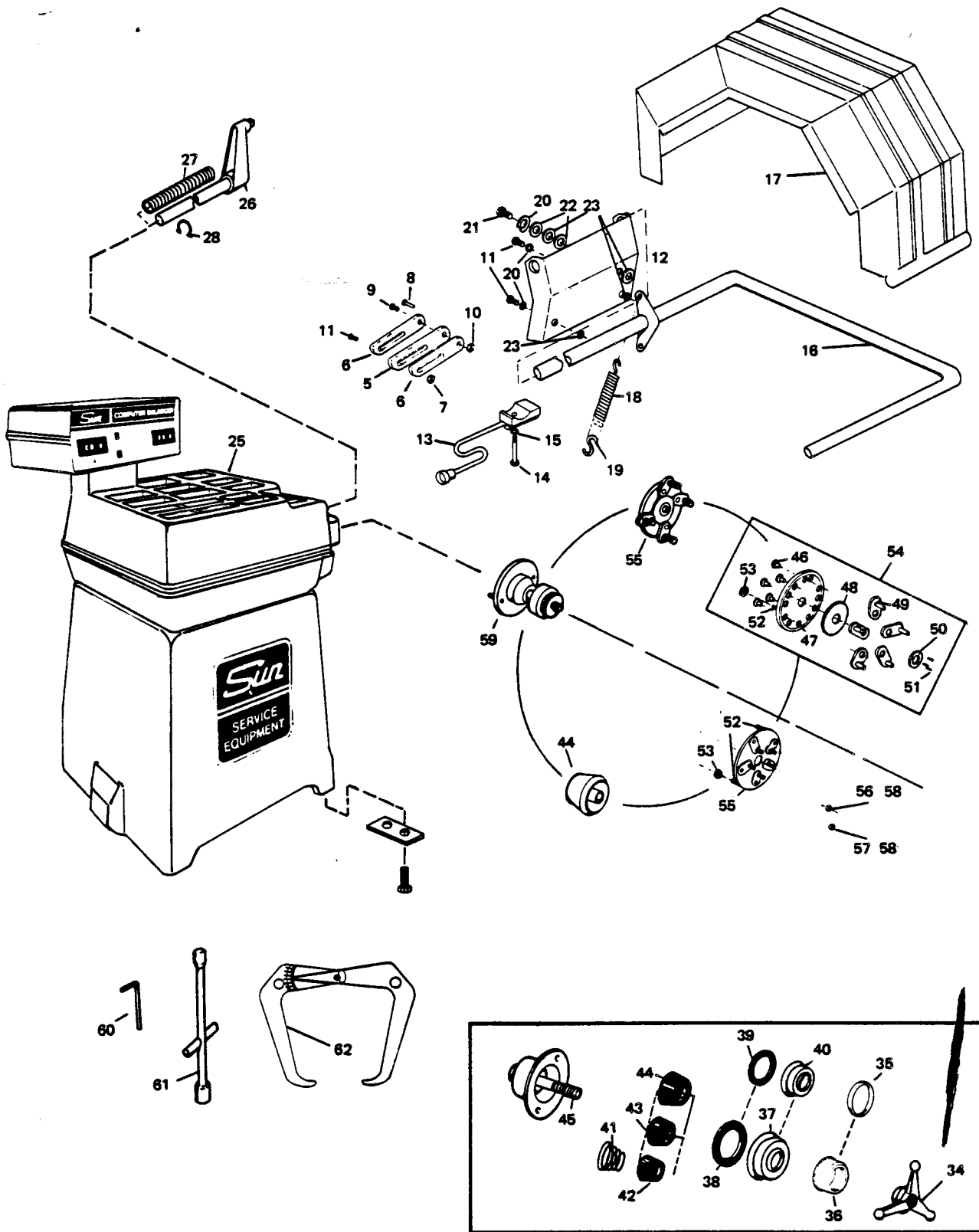


FIGURE 6 — Model CWB-1742 Computer Wheel Balancer and Accessories.

MODEL CWB-1742 WHEEL BALANCER AND ACCESSORIES PARTS LIST

| Item | Part Number | Description |
|------|--------------|---|
| 1. | 7400-1101-02 | Base assembly includes items (2, 3 and 4) |
| 2. | 0682-0424 | Sun Logo decal |
| 3. | 7400-1254-01 | Hold down plate (shipping anchor) |
| 4. | 4012-0205-08 | Screw, hex head 1/2-13x3/4 |
| 5. | 7300-1365-01 | Hood stop |
| 6. | 7400-1181-01 | Side plate |
| 7. | 7100-3126-01 | Adjusting cam |
| 8. | 7400-1288-01 | Hood stop bushing |
| 9. | 4012-0205-14 | Hex head screw, 1/2-13 x 1 1/2 |
| 10. | 7400-1337-01 | Hood stop arm |
| 11. | 4012-0205-14 | Hex head screw, 1/2-13 x 1 1/2 |
| 12. | 7400-1345-01 | Hood bracket assembly |
| 13. | 7000-7650-01 | Mercury switch |
| 14. | 4022-0107-10 | Socket head cap screw, 1/2-20 x 1 |
| 15. | 4019-0005-07 | Flat washer, 1/4 |
| 16. | 7400-1339-01 | Guard hood frame |
| 17. | 7400-1210-02 | Guard hood |
| 18. | 7100-3121-01 | Spring |
| 19. | 7400-1191-01 | Spring retainer |
| 20. | 4019-0004-10 | Split lockwasher, 1/2 |
| 21. | 4012-0205-14 | Hex head screw, 1/2-13 x 3 |
| 22. | 4019-0005-32 | 1/2 Washer |
| 23. | 4002-0003-03 | Neoprene washer |
| 24. | 3305-0001-03 | Console stripe decal |
| 25. | 7400-1180-01 | Main cover |
| 26. | 7400-1299-01 | Distance gauge assembly |
| 27. | 7400-1125-01 | Distance gauge spring |
| 28. | 3806-0003-01 | Retaining ring |
| 29. | 7400-1294-01 | -07 Weight decals, ounces seven decals 01 through 07 |
| 30. | 7400-1323-01 | -05 Weight decals, grams five decals 01 through 05 |
| 31. | 7400-1104-02 | Main cover assembly-- ounces |
| 32. | 7400-1104-03 | Main cover assembly-- grams |
| 33. | 7300-1372-01 | Accessory peg |
| 34. | 7300-1578-01 | Hub nut |
| 35. | 7300-1597-01 | No-mar ring |
| 36. | 7300-1641-01 | Insert assembly |
| 37. | 7300-1430-01 | Large pressure drum |
| 38. | 7300-1441-01 | Large bumper |
| 39. | 7300-1645-01 | Small bumper |
| 40. | 7300-1596-01 | Small pressure drum |
| 41. | 3825-0002-01 | Spring |
| 42. | 7300-1575-01 | Small cone |
| 43. | 7300-1575-02 | Medium cone |
| 44. | 7300-1575-03 | Large cone |
| 45. | 7024-0413-01 | Threaded stud |
| 46. | 7000-6990-03 | Swivel screw for combination adapter |
| 47. | 7100-3142-02 | Adapter plate, combi .375" thick |
| 48. | 7100-3209-01 | Gear, Delrin |
| 49. | 7100-3149-01 | Swivel assembly (7000-6710-01, 02 stud only 01, 4 & 5 lug; -02, metric & 3 lug) |
| 50. | 7100-3150-01 | Ring, gear retainer for Delrin gear |
| 51. | 4022-0104-06 | 8-32x1/2" socket head cap screw |
| 52. | 4023-0109-10 | Face plate stud |
| 53. | 7000-6360-01 | Face plate nut |

MODEL CWB-1742 WHEEL BALANCER AND ACCESSORIES PARTS LIST

| Item | Part Number | Description |
|------|-----------------|---|
| 54. | 7100-3148-04,05 | Combination adapter assembly; -04 standard, -05 metric (no nuts included) |
| 55. | 7000-8073-01 | Adapter, five-stud, rebuilt |
| | 7000-8072-01 | Adapter, four-stud, rebuilt |
| | 7000-8071-01 | Adapter, three-stud, rebuilt |
| 56. | 7000-6350-01 | Nut, wheel, 3/4" |
| 57. | 7000-6840-01 | Nut, European wheel, 7/8" |
| 58. | 7300-1485-01 | Metric nut large. 1485-01 metric nut, small. (10mm threads on both) |
| 59. | 7000-7590-01 | Adapter, wire wheel |
| 60. | 3302-0001-02 | 1/4" Allen wrench |
| 61. | 7000-6200-01 | Adapter wrench for lug nuts |
| 62. | 7400-1177-02 | Caliper assembly |
| | 3300-0001-01 | Weight Tool |

Hood hardware prior to rivet construction:

| | |
|--------------|----------------------------------|
| 4011-0705-04 | Oval head screw, 10-32 x 3/8 |
| 4019-0006-04 | Countersunk finished washer, 1/4 |

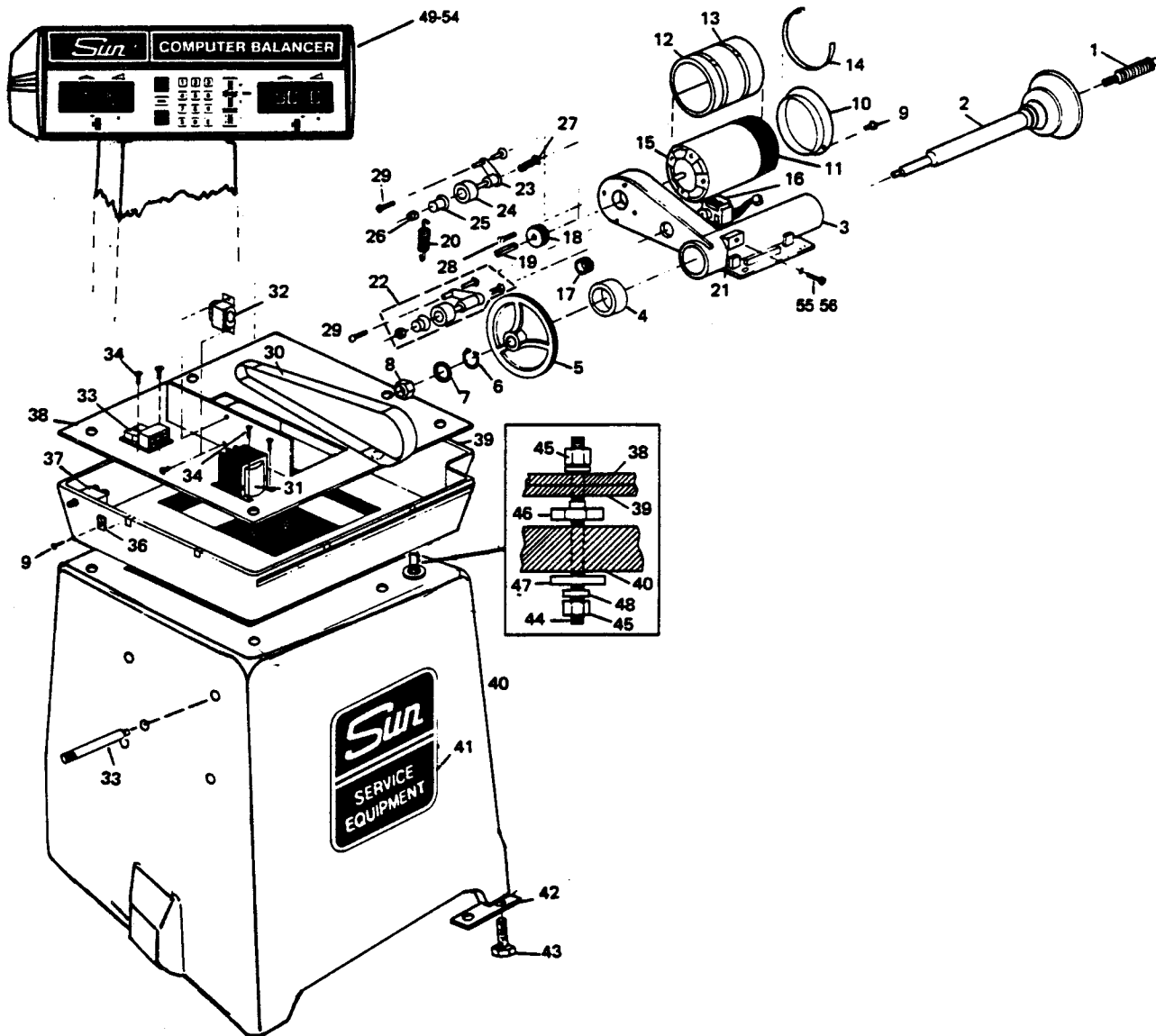


FIGURE 7 — Mechanical Assembly.

MODEL CWB-1742 MECHANICAL ASSEMBLY PARTS LIST

| Item | Part Number | Description |
|------|--------------|--|
| 1. | 7024-0413-01 | Threaded stud 4.75" long |
| 2. | 7400-1106-01 | Mainshaft/faceplate assembly |
| 3. | 0120-0489 | Main weldment assembly (See note on page 27) |
| 4. | 3701-0002-01 | Bearing |
| 5. | 7400-1143-02 | Slotted pulley 50 Hz 8.02 inch diameter |
| | 7400-1143-03 | Slotted pulley 60 Hz 7.77 inch diameter |
| 6. | 3805-0004-01 | Retaining ring |
| 7. | 4019-0005-33 | Washer |
| 8. | 4017-0001-24 | Hex nut, 5/8-18 |
| 9. | 4022-0304-06 | Screw, button head 8-32 x 1/2 |
| 10. | 7400-1224-01 | Exhaust boot flange |
| 11. | 7400-1146-01 | Exhaust boot |
| 12. | 7400-1285-01 | Motor insulation |
| 13. | 3811-0006-01 | Cable tie |
| 14. | 3811-0003-01 | Cable tie |
| 15. | 7300-1312-01 | Drive motor 3 phase 220 volt 60 Hz |
| | 7300-1312-02 | Drive motor 1 phase 115 volt 60 Hz |
| | 7300-1312-03 | Drive motor 3 phase 400 volt 50 Hz |
| 16. | 7300-1478-01 | Fan motor 3 phase 220 volt 60 Hz |
| | 7300-1478-02 | Fan motor 1 phase 115 volt 60 Hz |
| | 7300-1478-03 | Fan motor 3 phase 400 volt 50 Hz |
| 17. | 3821-0002-01 | Blower cage |
| 18. | 7300-1387-04 | 1742 Drive pulley 60 Hz 2.222" Dia. |
| | 7300-1387-05 | 1742 Drive pulley 50 Hz |
| 19. | 3808-0001-01 | Woodruff key |
| 20. | 7400-1219-01 | Idler spring assembly |
| 21. | 7300-1471-01 | Optical timing assembly mounting block |
| | 7300-1239-01 | Optical timing assembly |
| 22. | 7400-1278-01 | Idler arm/pulley assembly (includes items 23-27) |
| 23. | 7400-1330-01 | Idler arm assembly |
| 24. | 3839-0001-01 | Flat idler |
| 25. | 7400-1279-01 | Spring bushing |
| 26. | 4016-0001-19 | Lock nut, 3/8-16 UNC |
| 27. | 4012-0203-26 | Hex head screw, 3/8-16 x 3 |
| 28. | 4022-0110-10 | Socket head cap screw, 3/8-16 x 1 |
| 29. | 4022-0110-22 | Socket head cap screw, 3/8-16 x 2 1/2 |
| 30. | 3803-0001-05 | Drive belt, 36" |
| 31. | 2601-0010-01 | Transformer 60 Hz |
| | 2601-0012-01 | Transformer 50 Hz |
| 32. | 2102-0002-01 | Capacitor (use with transformers above as a set) |
| 33. | 2700-0002-01 | Contactator |
| 34. | 4011-0504-04 | Screw, binder head, 8-32 x 3/8 |
| 38. | 3402-0002-03 | Tinnerman nut, 8-32 |
| 37. | 2900-0007-01 | On/off switch, 115 volt, 1 amp |
| | 2900-0007-03 | On/off switch, 220volt, 0.5 amp |
| 38. | 7400-1145-01 | Reinforcing plate |
| 39. | 7400-1112-02 | Pan |
| 40. | 7400-1101-02 | Base assembly (includes items 41, 42 and 43) |
| 41. | 0682-0424 | Decal |
| 42. | 7400-1254-01 | Shipping anchor (Hold-down plate) |
| 43. | 4012-0205-08 | Screw, hex head 1/2-13 x 3/4 |
| 44. | 7400-1169-01 | Stud, 1/2-13 x 5 |
| 45. | 4017-0001-19 | Nut, hex 1/2-13 |
| 46. | 7400-1193-01 | Pan mounting nut |
| 47. | 4019-0005-16 | Washer |
| 48. | 4019-0004-10 | Lock washer, 1/2" |

MODEL CWB-1742 WHEEL BALANCER AND ACCESSORIES PARTS LIST

| Item | Part Number | Description |
|------|--------------|---|
| 49. | 7400-1309-03 | PCB/control panel assembly, ounces (includes items 50 and 51 or 52) |
| | 7400-1309-04 | PCB/control panel assembly, grams (includes items 50 and 51 or 52) |
| | 7098-0471 | PCB, main function |
| 50. | 7400-1310-02 | Trim plate assembly (includes keyboard) |
| | 7400-1258-01 | Decal keypad & display cover |
| | 7400-1340-01 | Keypad |
| | 7400-1424-01 | Rubber pad for keypad |
| | 7400-1289-01 | Sun headsign decal |
| | 7400-1429-01 | K-Mart headsign decal |
| | 1074-0002-01 | Rotunda headsign decal |
| | 1074-0007-01 | Atlas headsign decal |
| 51. | 7098-0473 | Display PCB - ounces |
| 52. | 7098-0472 | Display PCB - grams |
| 53. | 4012-0201-10 | Screw hex head 3/8-16 x 1 |
| 54. | 4019-0005-33 | Washer |

NOTE: Item 3. Main weldment assembly includes: Items 2, 3, 4, 5, 6, 7, and 8.

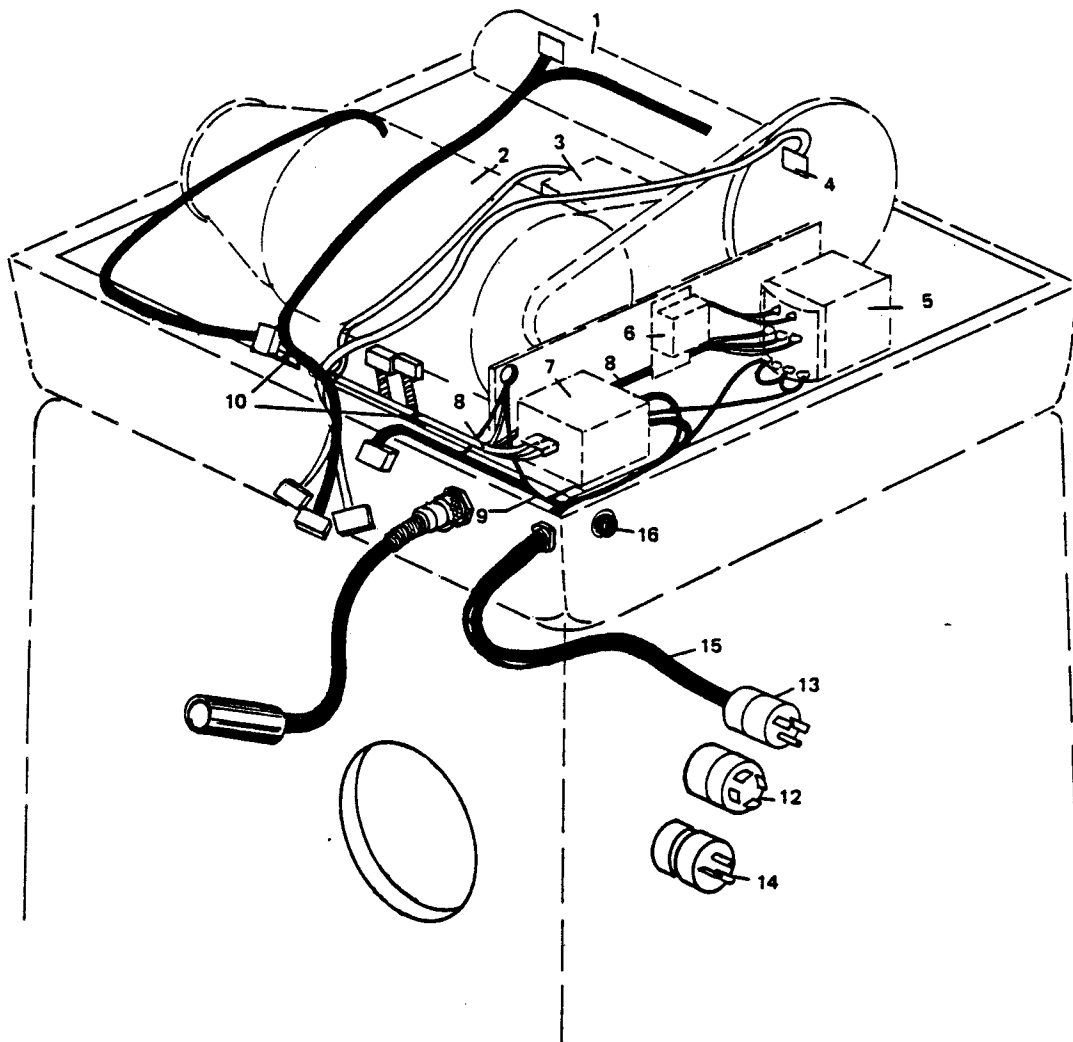


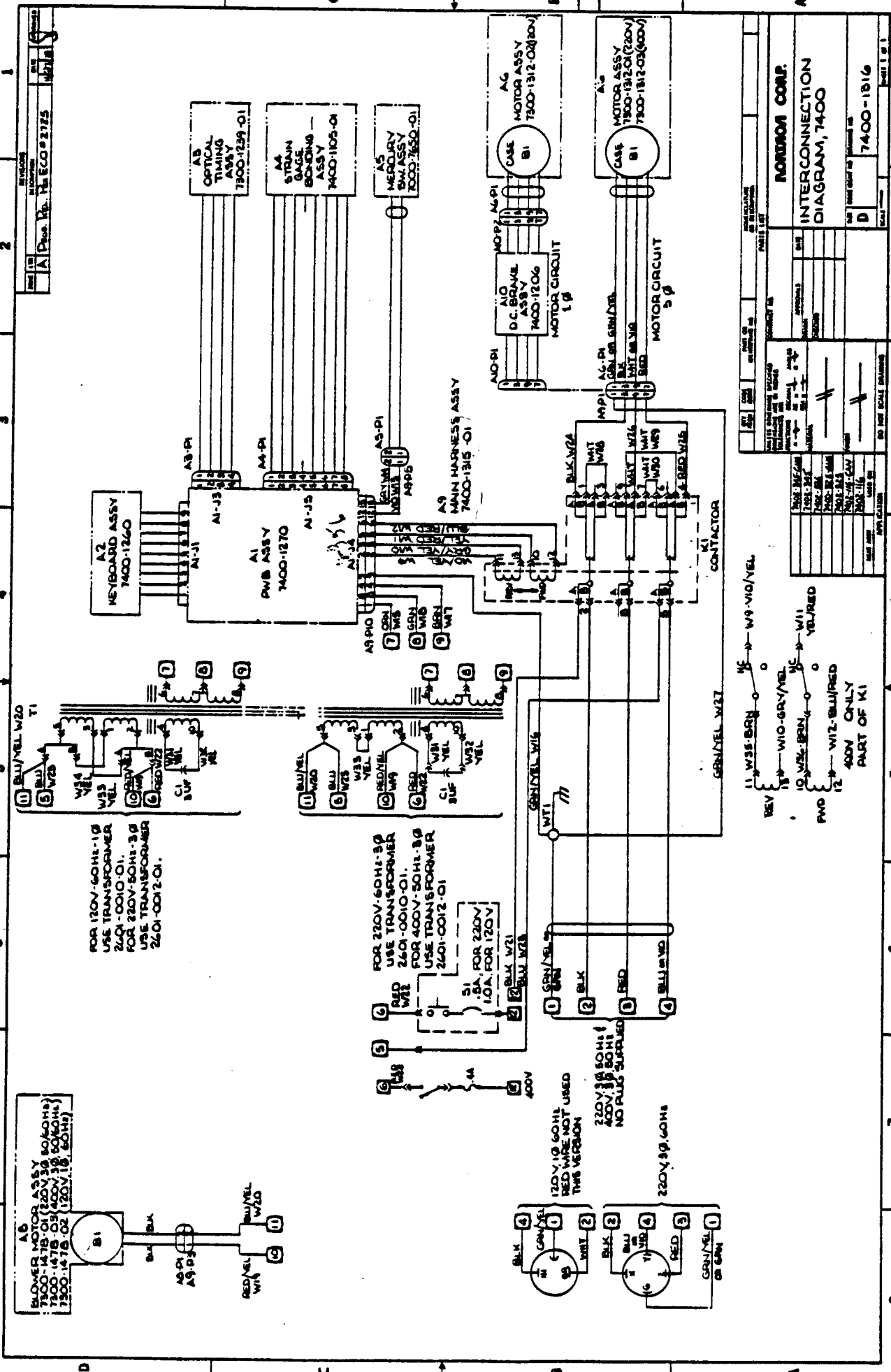
FIGURE 8 — Electrical Assembly.

MODEL CWB-1742 ELECTRICAL ASSEMBLY PARTS LIST

| Item | Part Number | Description |
|------|--------------|--|
| 1. | 0120-0498 | Main weldment assembly |
| 2. | 7300-1312-01 | Drive motor 3 phase 220 volt 60 Hz |
| | 7300-1312-02 | Drive motor 1 phase 115 volt 60 Hz |
| | 7300-1312-03 | Drive motor 3 phase 400 volt 50 Hz |
| 3. | 7300-1478-01 | Fan motor 3 phase 220 volt 60 Hz |
| | 7300-1478-02 | Fan motor 1 phase 115 volt 60 Hz |
| | 7300-1478-03 | Fan motor 3 phase 400 volt 50 Hz |
| | 3821-0002-01 | Blower cage |
| 4. | 7300-1239-01 | Optical timing assembly |
| 5. | 2601-0010-01 | Transformer 60 Hz |
| | 2601-0012-01 | Transformer 50 Hz |
| 6. | 2102-0002-01 | Capacitor (use with transformers above as an assembly) |
| 7. | 2700-0002-01 | Contactors |
| 8. | 7400-1305-01 | Low voltage harness assembly.(Routed along inside of reinforcing plate.) |
| 9. | 7400-1315-01 | High voltage harness assembly. (Routed along outside of reinforcing plate.). |
| 10. | 3811-0001-01 | Cable tie |
| 11. | 7400-1206-02 | D.C. brake assembly, modular type |
| | 7400-1222-01 | D.C.brake harness for integral type DC brake |
| 12. | 2803-0005-01 | Power plug, 3 phase 220 volt |
| 13. | 2803-0004-01 | Power plug, 1 phase 115 volt |
| 14. | 2803-0006-01 | Power plug, 1 phase 115 volt for Canada |
| 15. | 7300-1263-01 | Power cord and plug, 3 phase 60 Hz |
| | 7300-1263-02 | Power cord assembly, 3 phase 50 Hz |
| | 7300-1264-01 | Power cord and plug, 1 phase 115 volt |
| | 7300-1264-02 | Power cord and plug, 1 phase for Canada |
| | 7300-1265-01 | Power cord assembly, 3 phase 400 volt |
| 16. | 2900-0007-01 | On/off switch, 115 volt |
| | 2900-0007-03 | On/off switch, 220 volt |
| | 8004-0068 | Round guard, protector for switch |

D.C. Brake Components

| | |
|--------------|--|
| 7100-3162-01 | Repair kit D.C. brake (includes capacitor, bridge rectifier, 2 varistors, fuse, tie-wraps and thermal compound). |
| 2002-0001-01 | D.C. brake resistor |
| 2002-0002-01 | Resistor mounting bracket |
| 2102-0001-01 | Start Capacitor |
| 2700-0003-01 | D.C. brake relay |
| 2202-0004-01 | Bridge rectifier 800v |
| 3904-0001-01 | Fuse block, 3 AB, dual |
| 3904-0003-01 | Fuse, 15 amp, 3 AB, 250 volt ceramic |
| 7100-3161-01 | Wire harness for modular type D.C. brake |
| 7009-1776 | Varistor assembly |



| | | | |
|-----|----|-------------|-------------|
| REV | 1 | W35-BRN | W9-VIO/VEL |
| REV | 2 | W10-GRY/VEL | W11-YEL/RED |
| REV | 3 | W12-BLU/RED | W12-BLU/RED |
| REV | 4 | W12-BLU/RED | W12-BLU/RED |
| REV | 5 | W12-BLU/RED | W12-BLU/RED |
| REV | 6 | W12-BLU/RED | W12-BLU/RED |
| REV | 7 | W12-BLU/RED | W12-BLU/RED |
| REV | 8 | W12-BLU/RED | W12-BLU/RED |
| REV | 9 | W12-BLU/RED | W12-BLU/RED |
| REV | 10 | W12-BLU/RED | W12-BLU/RED |
| REV | 11 | W12-BLU/RED | W12-BLU/RED |
| REV | 12 | W12-BLU/RED | W12-BLU/RED |

ROTORON CORP.
 INTERCONNECTION DIAGRAM, 7400

DATE: 1964-11-15
 DRAWN: []
 CHECKED: []
 APPROVED: []
 PART NO. 7400-1315-01



SUN ELECTRIC
CORPORATION

ONE SUN PARKWAY
CRYSTAL LAKE, ILLINOIS 60014
(815) 459-7700