

## ILLUSTRATED PARTS BREAKDOWN

### PARTS LISTS

The following pages contain illustrated parts breakdowns of the principal assemblies and sub-assemblies of the CWB-1730 Wheel Balancer. Parts lists are keyed to the illustrations to permit ease of location of part and part number. The illustrations permit visualization of removal/replacement sequence and are referenced in the Replacement and Adjustment Procedures.

Parts with numbers beginning 7000-XXXX and above are SUN designed and tested parts and must be ordered directly from Nortron for replacement. Parts with numbers beginning 6999-XXXX and below are SUN specified and tested parts and should be ordered directly from Nortron for best performance after replacement. Parts without numbers and certain numbered parts such as cable ties, grommets, and fasteners should be obtained locally.

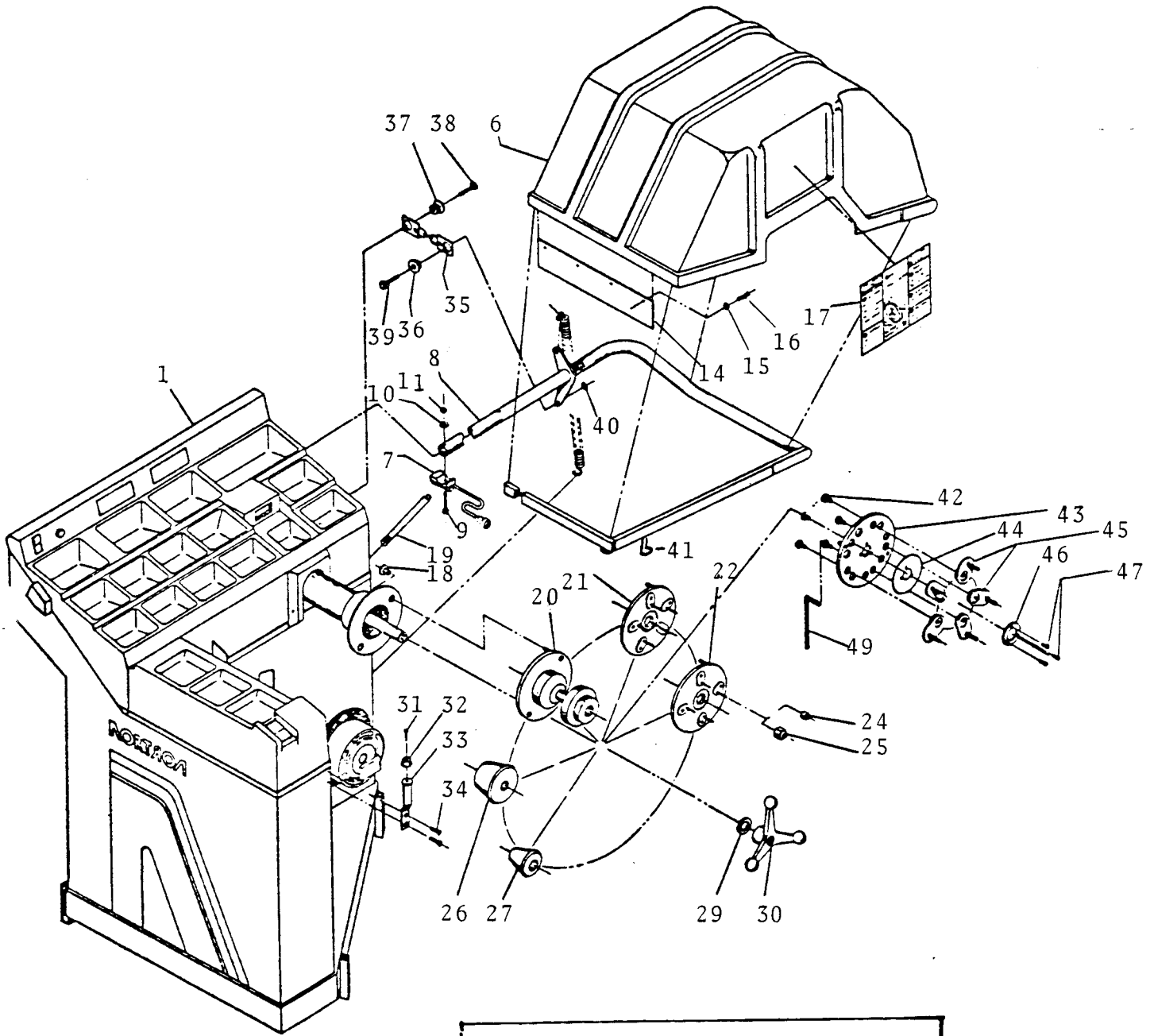
Sub-assemblies and parts are available as shown and listed. Individual parts of sub-assemblies are not available unless listed.

Figure 1. Wheel Balancer and Accessories Parts List

<u>PART NUMBER</u>	<u>ITEM</u>	<u>DESCRIPTION</u>
7300-1001 - 7300-1010	1	Wheel Balancer
7100-2050-01	6	Guard Hood
7000-7650-01	7	Mercury Switch
7300-1209-01	8	Frame, Guard Hood
4022-0107-20	9	1/4-20X2-1/4" Socket Head Cap Screw
4019-0005-07	10	1/4" Flat Washer
4016-0001-15	11	1/4-20 Nut, Hex, Esna
7100-3121-01	13	Spring, Extension
7000-7980-03	14	Flap, Rubber
4019-0005-05	15	Flat Washer .203X.562X.03
4015-0106-06	16	10-32X1/2" lg. Screw, thread cutting, pan head
7300-1306-01	17	Instruction Chart
7000-6360-01	18	Nut, Faceplate
7300-1372-01	19	Accessory Peg
7000-7590-01	20	Adapter, Wire Wheel
7000-8073-01	21	Adapter, Five-stud Rebuilt
7000-8072-01	22	Adapter, Four-Stud Rebuilt
7000-6350-01	24	Nut, Wheel
7000-6840-01	25	Nut, European Wheel
7300-1486-01	25	Metric Nut
7000-5090-01	26	Cone, Large
7000-5080-01	27	Cone, Small
7000-8050-01	29	Spacer, Hub Nut
7000-7930-01	30	Hub Nut
7000-8061-01	30	Hub Nut includes item 29
4022-0106-06	31	10-32X1/2" lg. Socket Head Cap Screw
3813-0001-01	32	1.0 dia. X 3/4" lg. Rubber Bumper
7300-1300-01	33	Stop, Guard Hood
4022-0406-06	34	1/4-20X1/2" lg. Socket Flat Head
7300-1365-01	35	Hood Stop
7300-1418-01	36	Hood Stop Anchor
7300-1417-01	37	Hood Stop Arm
4012-0205-14	38	1/2-13X1-1/2" Hex Head Cap Screw
4012-0205-08	39	1/2-13X3/4" Hex Head Cap Screw
7300-1419-01	40	Washer
7300-1343-01		Clamp, Round. Guard Hood
7300-1344-01	41	Clamp Rectangular
7300-1344-02	41	Clamp Rectangular
3402-0001-01	41	U Type Fastener
7000-6990-03	42	Swivel Screw
7100-3142-01	43	Adapter Plate, Combo .470" thick
7100-3142-02	43	Adapter Plate, Combo .375" thick
7100-3209-01	44	Gear
7100-3149-01	45	Swivel Assembly 7000-6710-01,02 Stud only
7100-3150-01	46	Ring, Gear Retainer
4022-0104-06	47	8-32" X 1/2" Socket Head Cap Screw
3302-0001-01-02	49	5/16" Allen Wrench, -02 1/4" Allen Wrench
7100-3148-04-05	49	Combination Adapter Assy. -04 Standard, -05 Metric (no nuts included)
7000-6200-01		Adapter Wrench, Lug Nuts
7300-1335-01		Operator's Manual
7300-1336-01		Service Manual
7300-1385-01		Lug Wrench Holder

Figure 1.

Wheel Balancer and Accessories.



Inset - Back Cone Adapter Parts

- |                 |              |
|-----------------|--------------|
| 1. Spring       | 3825-0002-01 |
| 2. Cone, small  | 7300-1429-01 |
| 3. Cone, medium | 7300-1429-02 |
| 4. Cone, large  | 7300-1429-03 |
| 5. Ring bushing | 7300-1431-01 |
| 6. Snap sleeve  | 7300-1444-01 |
| 7. Drum         | 7300-1430-01 |
| 8. Bumper       | 7300-1441-01 |

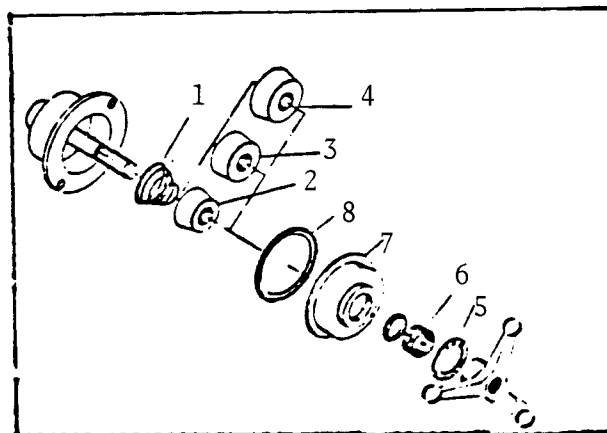


Figure 2. Parts List Main Cover and End Cover Assemblies

<u>PART NUMBER</u>	<u>ITEM</u>	<u>DESCRIPTION</u>
7300-1329-01	1	Main Cover Upper Display
7300-133-01, -02	2	Trim Plate Upper Display, -02 symbolized
2900-0003-01	3	Power Switch (ON-OFF) 115V and 220V
7300-1406-01	3	Power Switch (ON-OFF) 400V
3810-0001-01	5	Knob
7000-8004-01	6	Plug
7300-1351-01	7	Weight Decal ounces
7300-1370-01	7	Weight Decal grams
7300-1351-04	9	Weight Decal ounces
7300-1370-04	9	Weight Decal grams
7300-1351-03	10	Weight Decal ounces
7300-1370-03	10	Weight Decal grams
2001-0003-02	11	Potentiometer (Rim Dia)
7300-1540-01	11	Pot Assembly
7000-6610-01	12	Identification Label
7000-7340-01	13	Adapter Clean Label
4014-0104-06	14	No. 8 X 1/2" Sheet Metal Screw
4002-0004-01	15	Washer, Spacer
7300-1318-01	16	Danger Decal
7300-1332-01, -02	17	Position Trim Plate, -02 Symbolized
7300-1314-01	18	Seal, Main Cover
	19	
7300-1185-01	20	End Cover
4024-0503-08	21	6-32 X 3/4" Binder Head Screw
2901-0009-01	22	Start Switch,
7300-1348-01	22A	Switch Plate
7300-1351-05	23	Weight Decal ounces
7300-1351-02	24	Weight Decal ounces
7300-1370-04	24	Weight Decal grams
7300-1199-01	25	Main Cover, Lower Display
7300-1196-01	26	Trim Plate, Lower Display
7000-5795	27	Weight Decal, Lower Display
7000-5794	28	Weight Decal, Lower Display
7000-5791	29	Weight Decal, Lower Display
2001-0003-01	30	Rim Dia Potentiometer, Lower Display
	31	
7300-1308-01	32	Bracket, Potentiometer
	33	
	34	
7300-1194-01	35	Channel
7300-1280-01	36	Sponge Seal
4014-0103-02	37	No. 6 X 1/4" Sheet Metal Screw
7300-1225-01	38	End Plate
	39	
7300-1219-01	40	End Plate Assembly
7300-1223-01	41	Main Cover Assembly, Lower Display
7300-1353-01, -04	42	Main Cover Assembly Ounce, -04 Grams
7300-1539-01, -04	42	Main Cover Assembly Ounce, -04 Grams (Since machine sequence #4500)
7300-1224-01	43	End Cover Assembly Ounces
7300-1224-02	43	End Cover Assembly Grams

Figure 2.

Main Cover and End Cover Assemblies

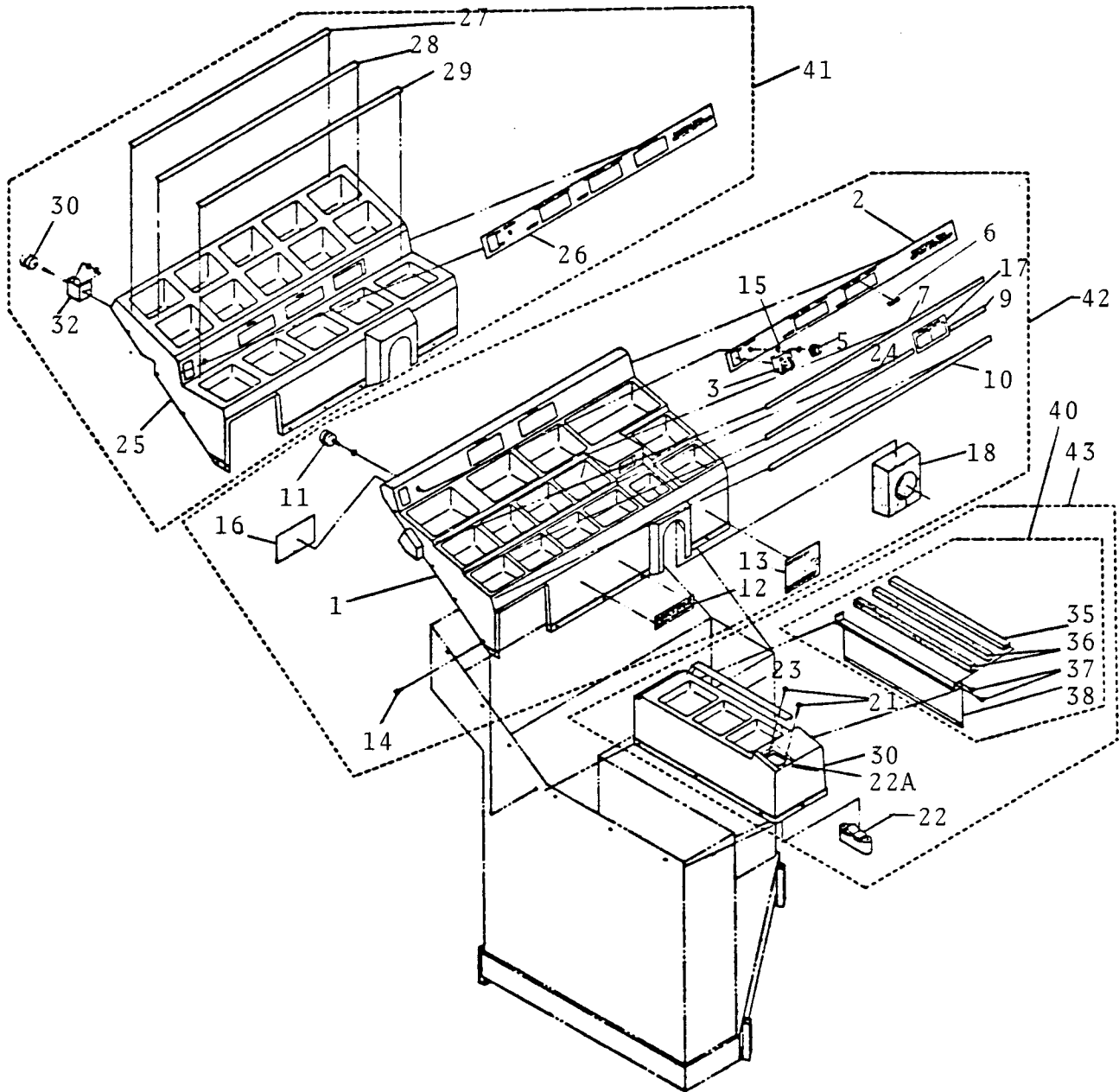


Figure 3. Mechanical Assembly Parts List

<u>PART NUMBER</u>	<u>ITEM</u>	<u>DESCRIPTION</u>
7300-1010-01	1	Frame Assembly
7300-1166-01	2	Transmission Arm
7300-1214-01	2	Transmission Arm Assembly
7300-1207-01	3	Spacer
7300-1206-01	3A	Guide Bar
7300-1215-01	4	Piezo Carrier Assembly, Inner, (Red)
7300-1215-02	4A	Piezo Carrier Assembly, Outer, (Black)
7100-3085-02	5	Spacer, Sliding
7300-1173-01	6	Mainshaft Assembly
7000-6670-01	7	Threaded Stud
7300-1193-01	8	Sight Bracket, Inner
7300-1190-01	9	Sight Bracket, Outer
3803-0001-01	10	Belt, Drive
4017-0003-11	11	Nut, Hex, 3/4-16 UNC
4019-0005-17	12	Washer, Flat, 0.656" i.d. X 1.312" o.d. X 0.95" thk
7300-1282-01	13	Slotted Pulley, 6" diameter
7300-1567-01	13	Kit for 6.22" diameter
3701-0002-01	14	Bearing
4022-0107-10, -08	15	Socket Head Cap Screw, 1/4-20 UNC X 1" lg. -08, 3/4 after #6433
7300-1237-01	16	Bracket, Mounting, (Optical Timing Assy) Prior to #6433
7300-1471-01	16	Bracket, Mounting, After #6433
3808-0001-01	17	Woodruff Key
4017-0001-15	18	Nut, Hex, 3/8-16 UNC
7100-2169-01	19	Washer, Vertical Rod
4022-0105-15	20	Socket Head Cap Screw, 10-24 X 1-5/8" lg.
7300-1544-01	21	Transverse Rod
4022-0406-06	22	Socket Flat Head Screw, 1/4-20 X 1/2" lg.
4017-0001-11	23	Nut, Hex, 1/4-20
4016-0001-15	24	Nut, Esna, 1/4-20
4011-0105-08	25	Hex Head Cap Screw, 10-24 UNC X 3/4" lg.
4017-0001-07	26	Nut, Hex, 10-24
7300-1192-01	27	Plate, Sight Bracket Mounting
7300-1315-01	28	Plate, Sight Bracket Mounting
4022-0201-08	29	Hex Head Cap Screw, 1/4-20 UNC X 3/4" lg.
7300-1312-01	30	Motor Assembly 220V 3 Ø 60 Hz
7300-1312-02		Motor Assembly 115V 1 Ø 60 Hz
7300-1312-03		Motor Assembly 400V 3 Ø 50 Hz
7300-1312-04		Motor Assembly 220V 3 Ø 50 Hz
7300-1566-01	30A	Motor Pulley Kit (Small) 1.64" Diameter Marked - nothing or "60"
7300-1566-03		Motor Pulley Kit (Large) 1.7" Diameter Marked - "01"
7300-1357-01		Motor Pulley 50 Hz only.
7300-1204-01	31	Motor Mount Weldment, 7300-1495-01 after machine #4500 Fan, Motor Assembly Prior to machine sequence #4500
7300-1313-01	32	Fan Motor 220V discontinued. Use 7300-1561-02. Fan Retrofit Kit.
7300-1313-02		Fan Motor 115V discontinued. Use 7300-1561-03. Fan Retrofit Kit.
7300-1313-03		Fan Motor 400V discontinued. Use 7300-1561-02 also with 7300-1491-01. Step-down transformer. Fan, Motor Assembly After machine sequence #4500

Figure 3. Mechanical Assembly Parts List

<u>PART NUMBER</u>	<u>ITEM</u>	<u>DESCRIPTION</u>
7300-1478-01		Fan Motor 220V and 400V
7300-1478-02		Fan Motor 115V
3821-0001-01	33	Blower Cage
3821-0002-01	33	Blower Cage, after machine #4500
4022-0110-10	36	Socket Head Cap Screw 3/8-16 UNC X 1" 1g.
4019-0005-12	37	Washer, Flat, 0.406"i.d. X 0.812"o.d. X 0.06"thk
7300-1168-01	38	Pressed Cup
7300-1169-01	39	Grommet, Motor Mount
4019-0005-19	40	Washer, Flat, 0.81"i.d. X 2.00"o.d. X 0.15" thk
4017-0003-11	41	Nut, Hex, Jam 3/4-16 UNF
7300-1401-01	42	Spring, Motor
7300-1213-02	43	Vertical Rod
7100-3158-01	44	D.C. Brake Assembly (Optional)
4011-0505-04	45	Screw Bind. Head, 10-24 X 3/8" 1g.
4019-0005-12	46	Washer, Flat, 3/8"
4010-0001-01	47	Eye Bolt, 5/16 X 3.25" 1g.
4019-0005-10	48	Washer, Flat, 5/16 Nom.
4017-0001-15	49	Nut, Hex Head 3/8-16 UNC
7300-1402-01	50	Spring Kit
7100-3195-02	51	Tube, Vertical Rod
3801-0003-01	52	Caplug (2 required)

Figure 3.

Mechanical Assembly

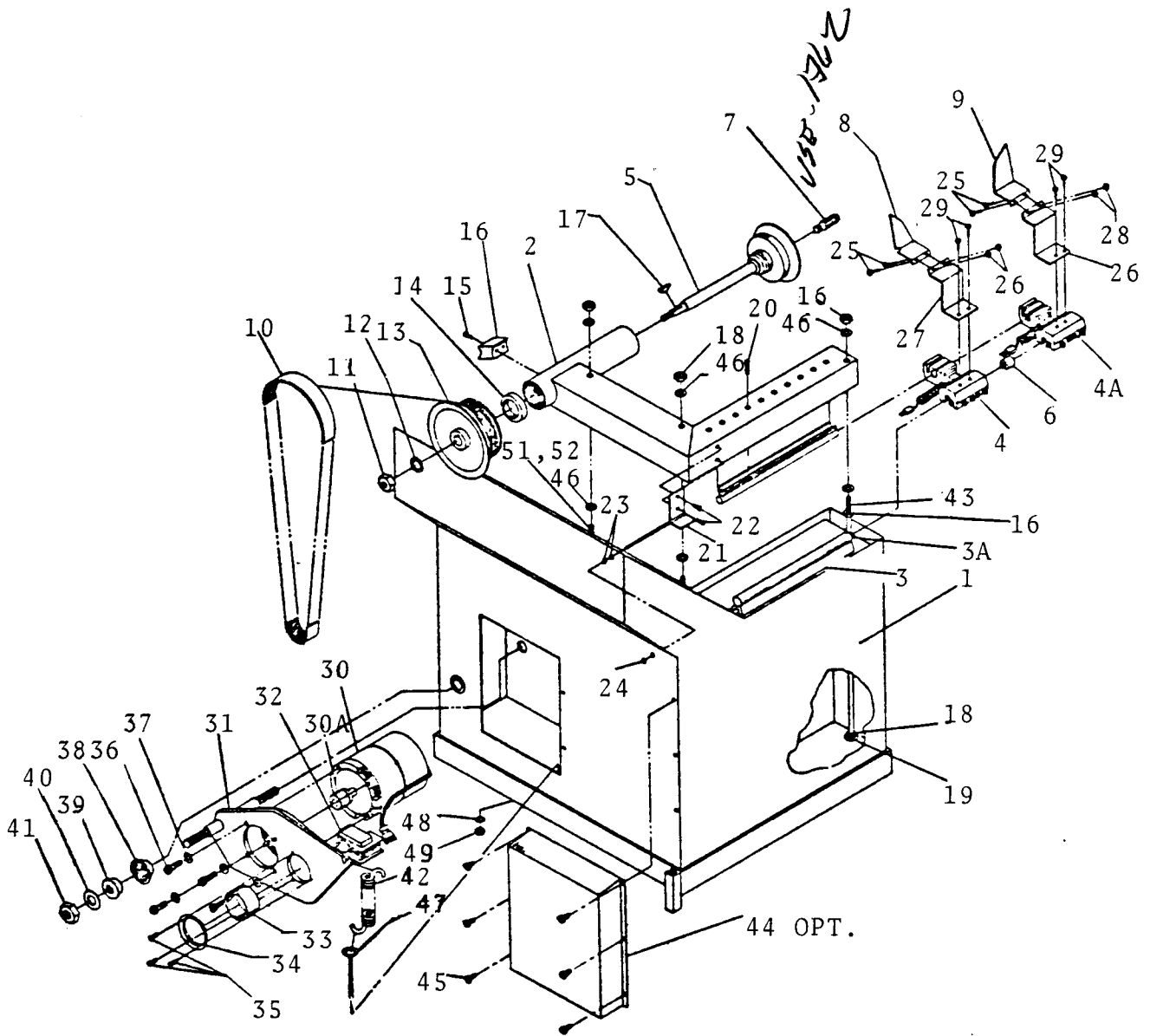




Figure 4. Piezo Carrier Assembly Parts List

Part Number	Item	Description
7100-3033-02	1	Bearing Housing
3702-0003-02, -03	2	Ball Bushing -02 Transmission arm, -03 Frame
7100-3083-01	3	Washer, Felt
3818-0001-01	4	Seal
7300-1319-01	5	Retaining Ring
7300-1281-01	6	Special Setscrew
4017-0003-02	7	Nut, Hex, Jam, 1/4-28
4012-0201-08	8	Hex Head Cap Screw, 1/4-20 x 3/4" Lg.
7100-3046-01	9	Piezo and Cable Assembly, Inner (Red)
7100-3046-02	9A	Piezo and Cable Assembly, Outer (Black)
4022-0413-11	10	Screw, Socket Flat Head, 5/16-24 x 1-1/8" Lg.
7300-1205-01	11	Bearing Housing
7300-1391-01		Piezo Jumper Assembly (Spares)

Figure 4.

Piezo Carrier Assembly

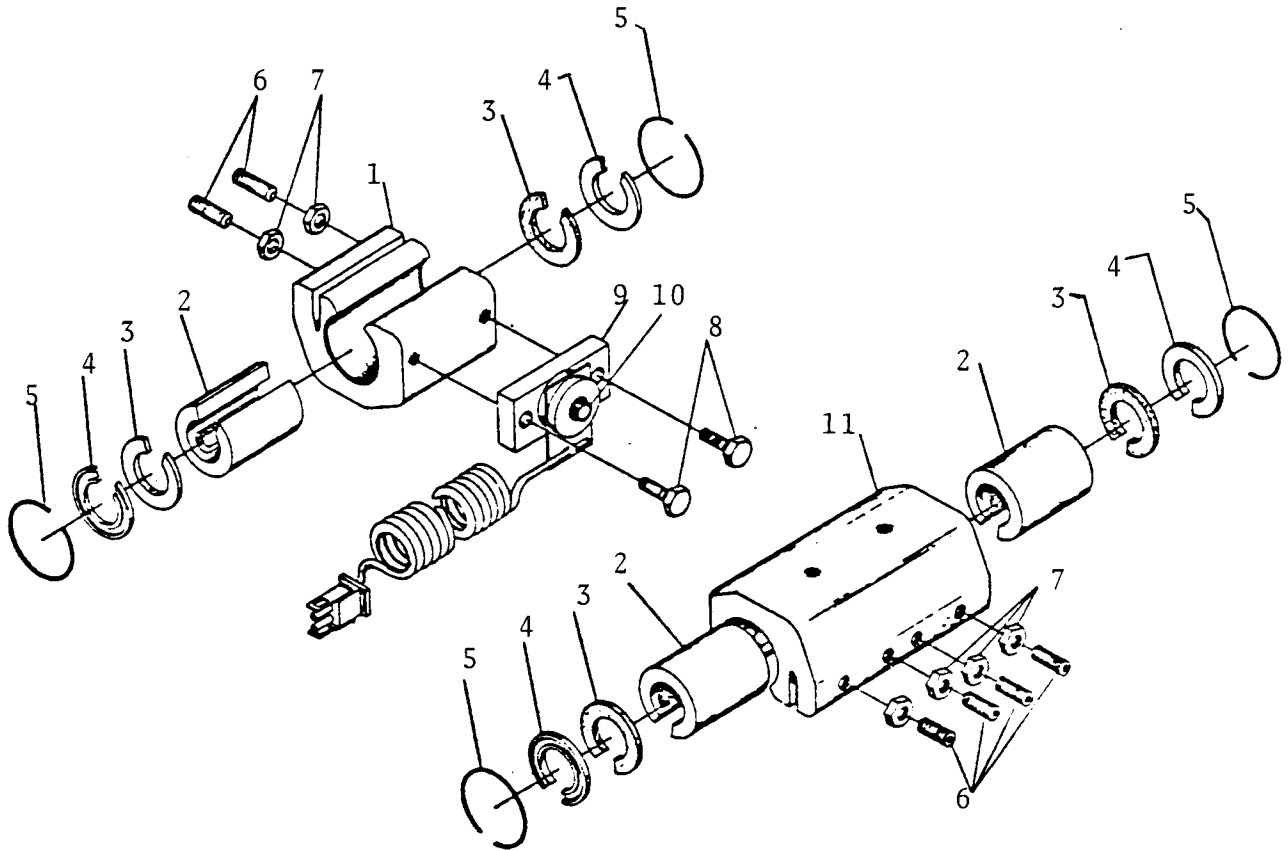


Figure 5. Electrical Harness Assembly Parts Lower Display

Part Number	Item	Description
7300-1316-01	1	PWB/Power Panel Assembly
2601-0003-01	1A	Transformer
2101-0002-01	1B	Capacitor
2700-0002-01	1C	Contactoer
7300-1183-01	1D	Board Bracket
4011-0504-10	2	Screw, Binder Head, 8-32 x 1" Lg.
3812-0001-01	3	Cable Mount
7100-3046-01	4	Piezo and Cable Assembly, Inner (Red)
7100-3046-02	5	Piezo and Cable Assembly, Outer (Black)
7300-1274-01	6	Start Switch Cable Assembly
7300-1275-01	7	Harness Assembly
7300-1250-01	8	PWB Assembly (Printed Circuit Board) - Ounces
7300-1510-01	8	PWB Assembly (Printed Circuit Board) - Grams
7300-1239-01	9	Optical Timing Assembly
2803-0004-01	10	Power Plug
4018-0001-04	11	Nut, Kep, 8-32
4019-0003-07	12	Lock Washer, 1/4" nominal
4012-0201-14	13	Hex Head Cap Screw, 1/4-20 UNC x 1-1/2" Lg.
7100-3158-01	14	D.C. Brake Assembly
4011-0505-04	15	Screw, Binder Head, 10-24 UNC x 3/8" Lg.
3811-0001-01	16	Tie Wrap
4021-0001-02	17	Wing Nut, Nylon, 8-32
4012-0201-06	18	Hex Head Cap Screw, 1/4-20 x 1/2" Lg.
4019-0005-07	19	Flat Washer, 1/4 i.d. x 3/4 o.d.
3824-0001-01	20	Capacitor Clamp

Figure 5.

Electrical Harness Assembly Lower Display

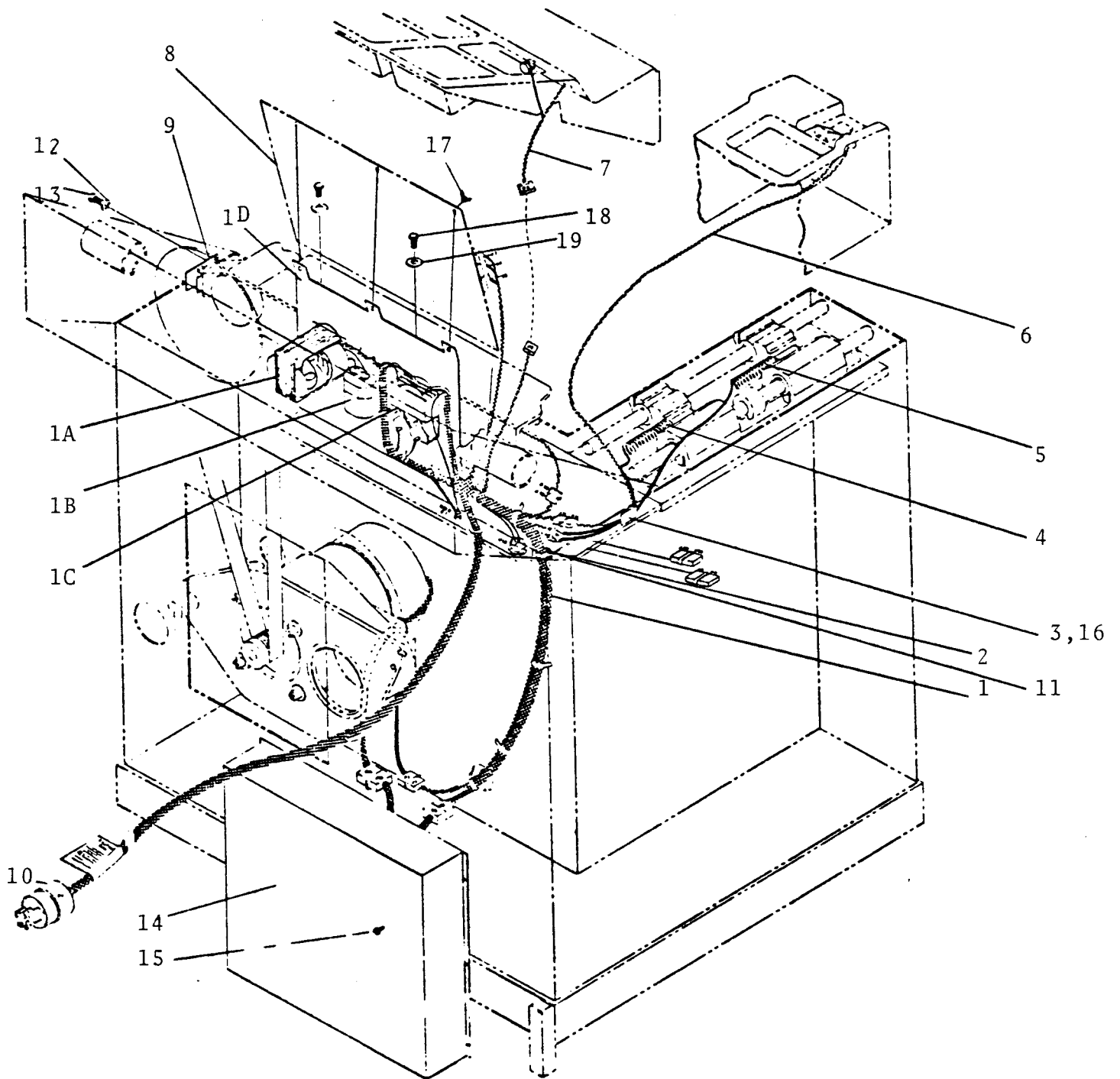
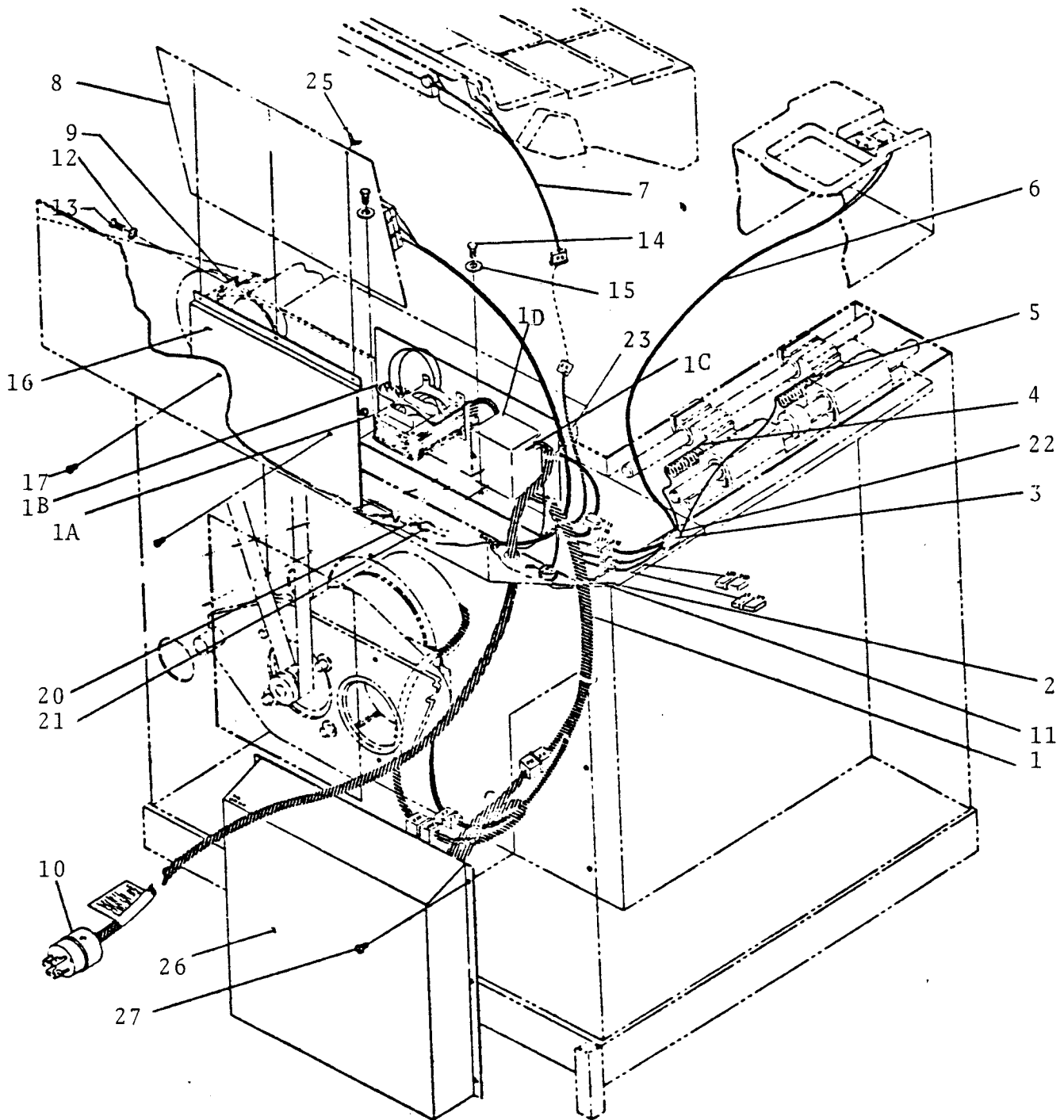


Figure 6. Electrical Harness Assembly Parts List Upper Display

Part Number	Item	Description
7300-1537-01	1	Main Wire Harness
2601-0003-01	1A	Transformer 60 HZ
2601-0006-01		Transformer 50 HZ
2102-0002-01	1B	Capacitor
2700-0002-01	1C	Contactator 115V and 220V
2700-0001-01		Contactator 400V
7300-1337-01	1D	Panel Bracket
4011-0504-10	2	Screw, Binder Head 8-32 x 1" Lg.
3812-0001-01	3	Cable Mount
7100-3046-01	4	Piezo and Cable Assembly, Inner (Red)
7100-3046-02	5	Piezo and Cable Assembly, Outer (Black)
7300-1274-01	6	Start Switch Cable Assembly. Used prior to machine #4500. Part of 7300-1537-01 after machine #4500
7300-1275-01	7	Rim Diameter Pot and Harness. Prior to #4500.
7300-1540-01	7	Rim Diameter Pot and Harness. After machine #4500.
7300-1250-01	8	Printed Circuit Board Assembly (PCB) - Ounce
7300-1510-01	8	Printed Circuit Board Assembly (PCB) - Gram
7300-1239-01	9	Optical Timing Assembly
2803-0001-01	10	Power Plug 3 Ø 220V
2803-0004-01		Power Plug 1 Ø 115V
2803-0006-01		Power Plug 1 Ø 115V Canada
7300-1263-01		Power Cord and Plug 3 Ø 60 HZ
7300-1263-02		Power Cord, no plug 3 Ø 50 HZ
7300-1264-01		Power Cord and Plug 1 Ø 115V
7300-1265-01		Power Cord and Plug 1 Ø Canada
4018-0001-04	11	Kep Nut 8-32
4019-0003-07	12	Lock Washer 1/4" Nominal
4012-0201-14	13	Hex Head Cap Screw 1/4-20 UNC, 1-1/2" Lg/
4019-0005-07	15	Flat Washer, 1/4 i.d. x 3/4 o.d.
7300-1334-01	16	Bracket, PCB
4011-0505-06	17	Binder Head Machine Screw, 10-24 x 1/2"
3811-0001-01	20	Cable Tie
3812-0001-01	21	Cable Mount
3811-0001-01	22	Cable Tie
3811-0002-01	23	Cable Tie
4021-0001-02	25	Wing Nut, Nylon 8-32
7300-3158-01	26	D.C. Brake Assembly
4011-0505-04	27	Screw, Binder Head 10-24 x 3/8"

Figure 6. Electrical Harness Assembly Upper Display





SUN ELECTRIC  
CORPORATION

ONE SUN PARKWAY  
CRYSTAL LAKE ILLINOIS 60014  
(815) 459-7700

0692-9040

© 1984 Sun Electric Corporation

Printed in U.S.A.

"FOR REFERENCE ONLY"