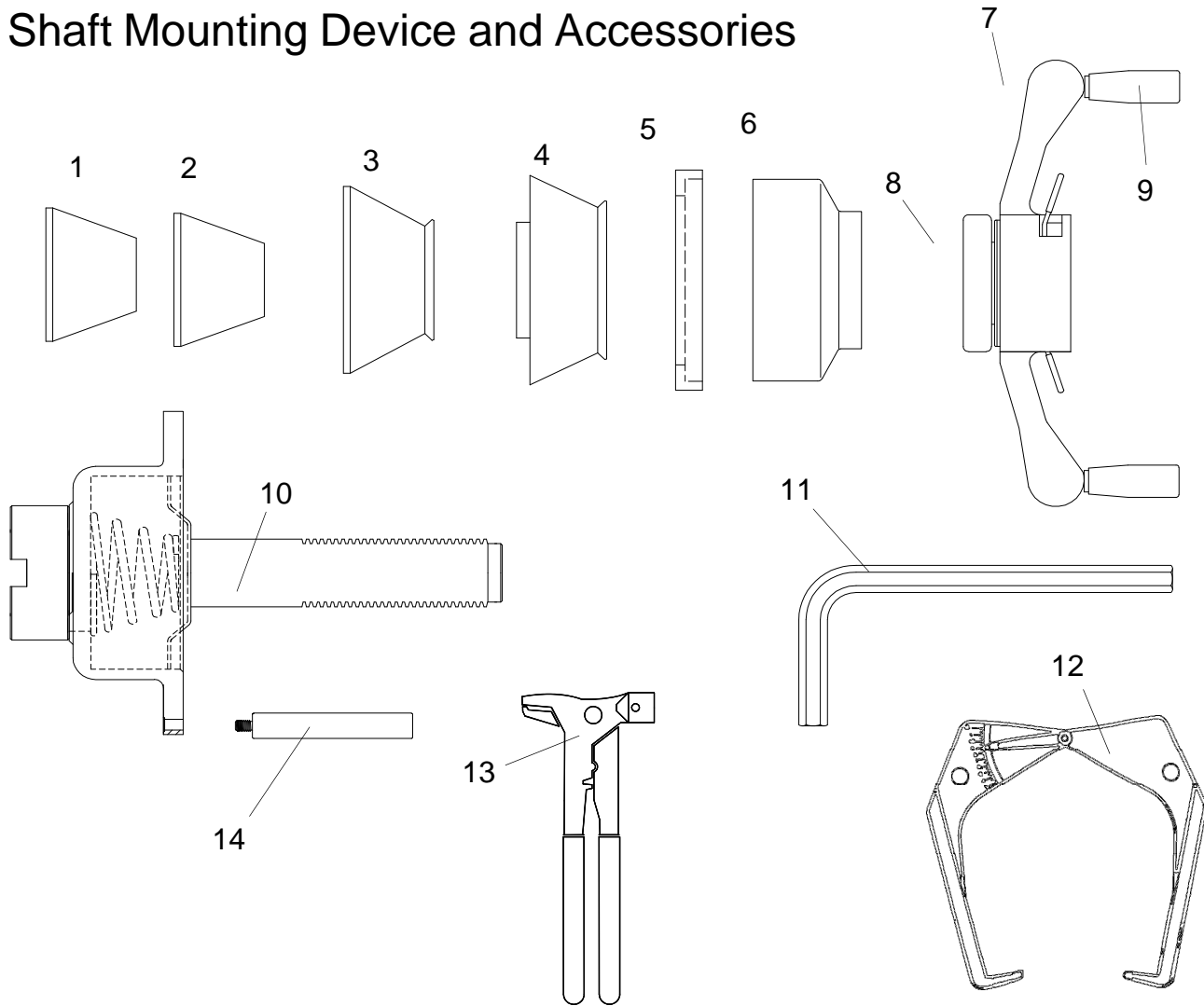


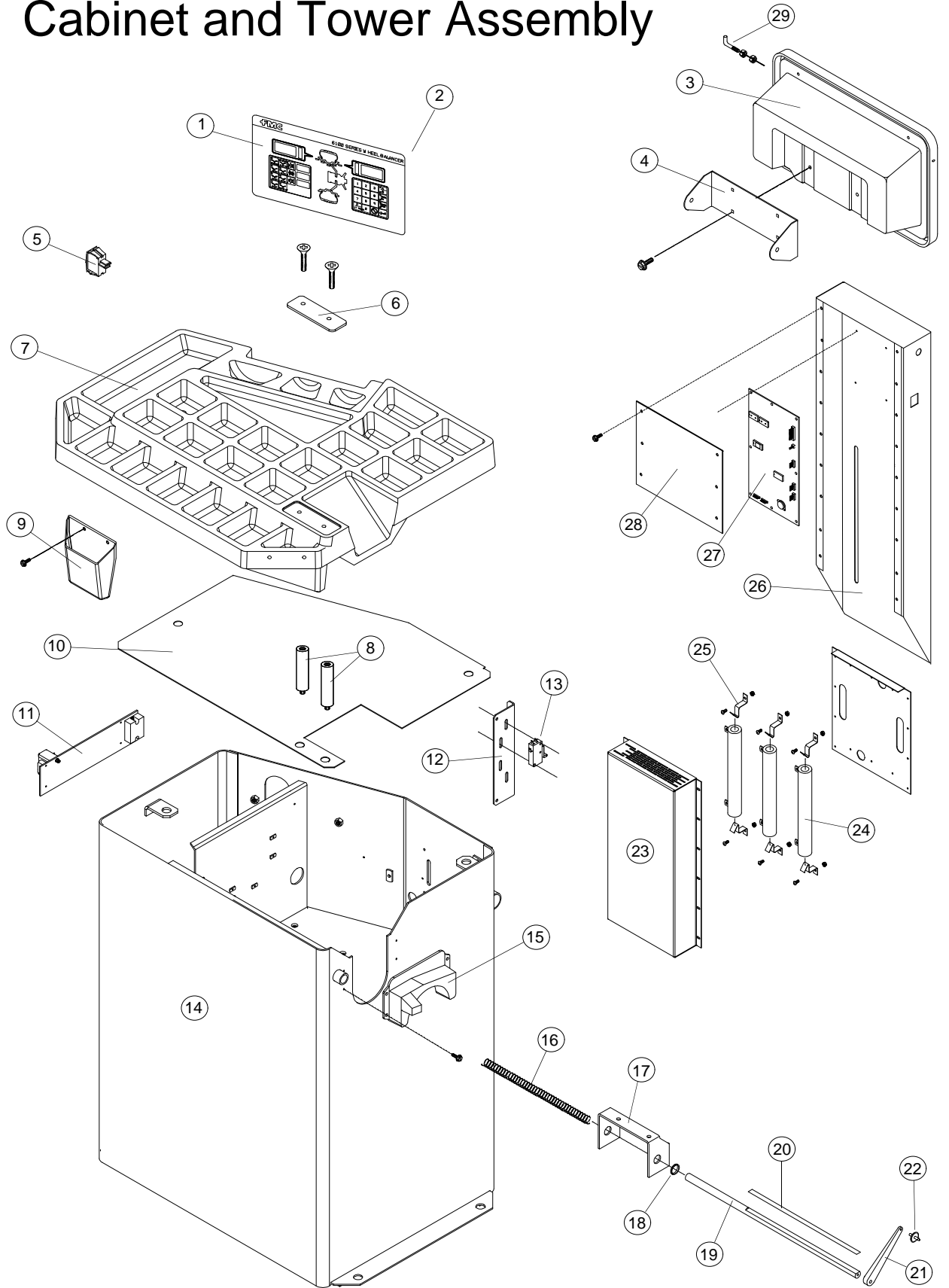
Shaft Mounting Device and Accessories



Parts Reference

<u>Item</u>	<u>Part Number</u>	<u>Quantity</u>	<u>Description</u>
*	111325	1	Accessory Pack - Contains:
1	111326	1	Cone - 42-65mm
2	111327	1	Cone - 61-76mm
3	111328	1	Cone - 75-90mm
4	111329	1	Cone - 89-132mm
5	110410	1	Rubber protective ring
6	110595	1	Clamping hood
7	110998	1	Speednut
8	110596	1	Pressure ring
9	111333	2	Spin handles
10	111324	1	Basic centering device
11	110573	1	Allen wrench (12mm)
12	61123	1	Rim width gauge
13	58839	1	Weight Pliers
14	110940	1	Test and Calibration Weight
*	61750	3	1/2" Anchor Studs

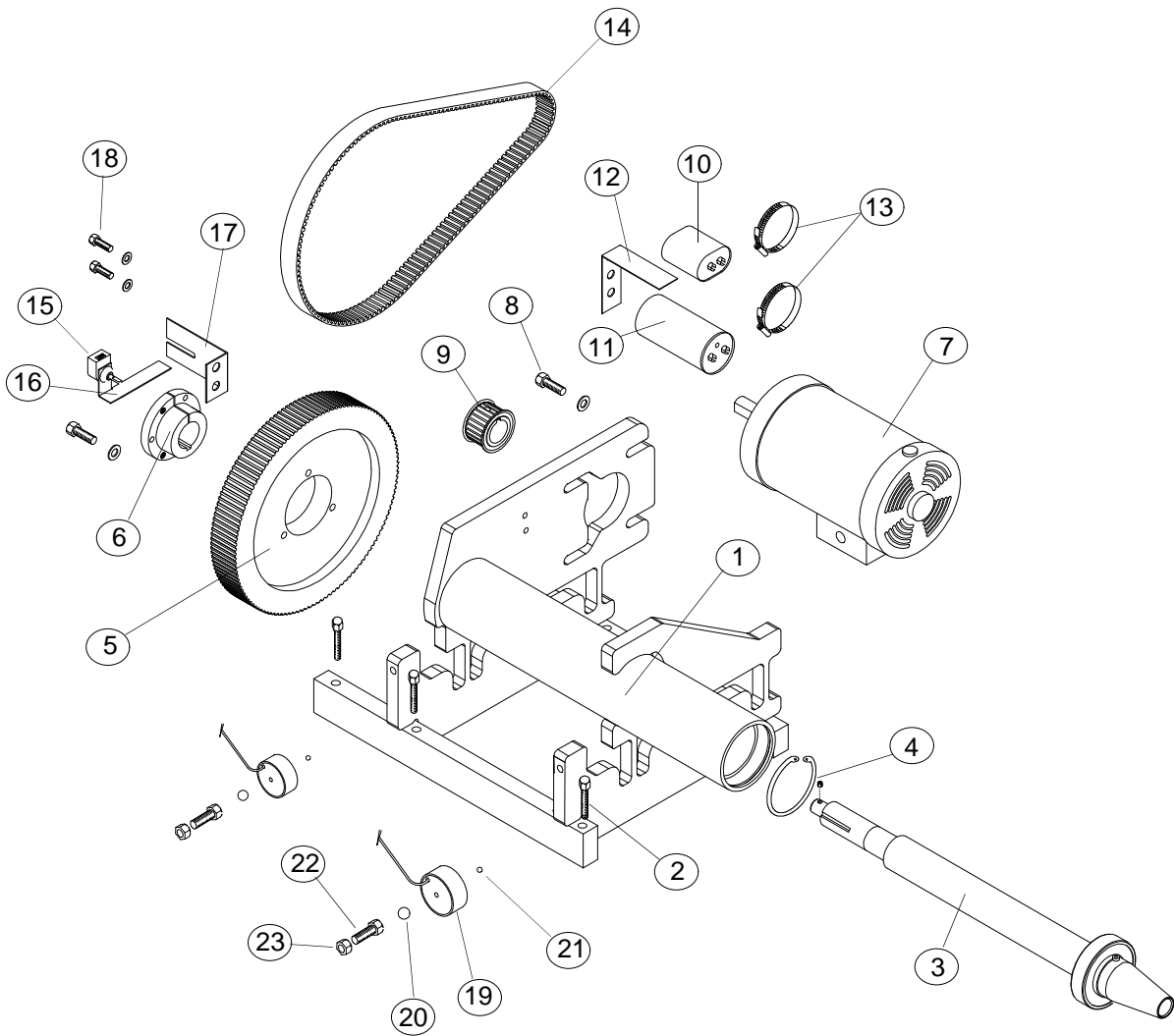
Cabinet and Tower Assembly



Cabinet and Tower Assembly

<u>Item</u>	<u>Part Number</u>	<u>Quantity</u>	<u>Description</u>
1	00111060000	1	Touchpanel
2	00111162EX0	1	Display PCB
	01122158000	6	Spacer
	01101760000	6	#6-32 KEPS Nut
3	00111077000	1	Display Housing
4	00111123000	1	Housing Bracket
	01100178000	4	1/4-20 Carriage bolt
	01107381000	4	1/4 Flat Washer
	01101609000	4	1/4 Nut
5	00083048000	1	On-Off Switch
6	00110821000	1	Anvil
	01122026000	2	Screw - 1/4-20
7	00110800000	1	Weight Tray
	01101835000	2	Screw - 1/4-20X3/4
8	00110959000	2	Tray-Anvil Spacer
9	00111232000	1	Plier Pocket
	00111272000	1	Pocket Decal
	01177999000	2	1/4-20 Screw
	01100254000	2	1/4 Flat Washer
	01122167000	2	Tee-Nut, Captive
10	00110831000	1	Fire Shield
11	00111192EX0	1	3 ph Control pcb - 230 volt
	00111191EX0	1	3 ph Control pcb - 208 volt
	00111083EX0	1	1 ph Control pcb - 230 volt
	00111452EX0	1	3 ph Control pcb - 415 volt
12	00111229000	1	Switch Bracket
13	00111228000	2	Microswitch
	01115607000	4	#4-40x3/4 screw
	01109762000	4	#4-40 nut
	01101606000	4	#2 lockwasher
14	00111134000	1	Cabinet Assy.
	00111121000	4	Storage Peg
	00110312000	1	Power Cord - 208/230 3PH
	00110313000	1	Power Cord - 230-1PH
	01228668000	1	Strain Relief
	00110342000		Connector - 1 Phase
	00110341000		Connector - 3 Phase
	01185361000	1	O'ring for distance gage rod
15	00111189000	1	Tube Cover
	01101883000	4	#8-32 self tap screw
16	00111260000	1	Spring
17	00111262000	1	Bracket, gage
18	00111257000	2	Bushing, bracket
19	00111261000	1	Rod, distance gage
20	00111267000	1	Label, gage rod
21	00111155000	1	Gage Arm
22	00111154000	1	Gage Contactor
23	00111302000	1	Resistor Cover
	01101883000	12	#8-32 Self Tap screw
24	00110711000	3	Brake Resistor
25	00061653000	6	Resistor Bracket
26	00111120000	1	Display Tower frame
	00111280000	1	Protective Mat
27	00111197EX0	1	Main Computer PCB
	00111273000	1	Software IC - REV 7.08 C, used for 400 count shaft encoder
	00111559000	1	Software IC - REV 7.09 D, used for 512 count shaft encoder
	01122158000	7	Nylon Spacer
	01101760000	7	#6-32 KEPS Nut
28	00111118000	1	Tower Cover Plate
	01101883000	6	#8-32x.50 Screws
29	00111241000	1	Hook for calipers
	01121507000	2	1/4-20 nut

Motor Drive and Suspension

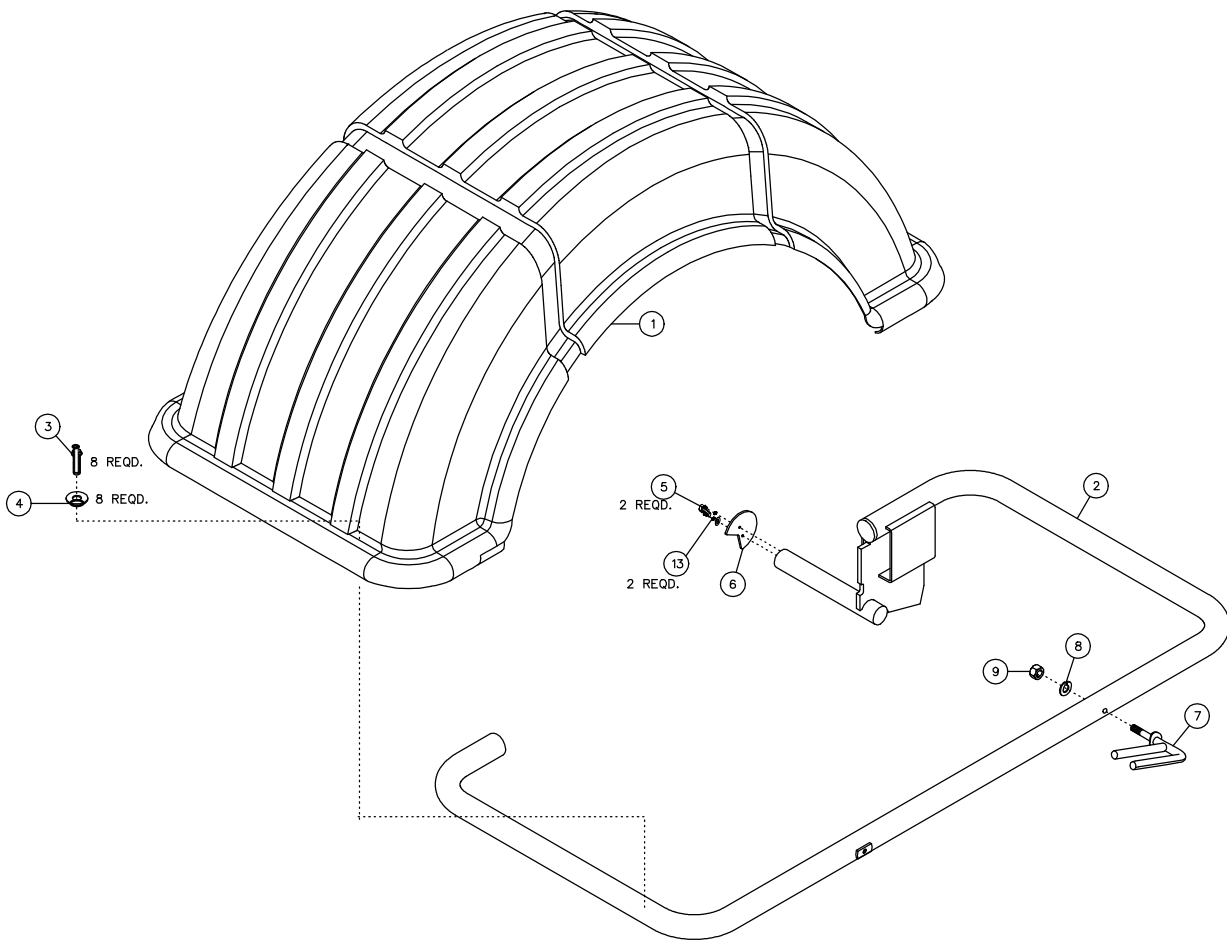


Motor and Suspension Assembly

<u>Item</u>	<u>Part Number</u>	<u>Quantity</u>	<u>Description</u>
1	111176	1	Suspension Assembly
2	1106938	3	HHC Screw 3/8-16x2.75, Hardware for front of Suspension
	1100049	3	HHC Screw 3/8-16x2.25, Hardware for rear of Suspension
3	111178	1	Shaft Assembly (includes bearings)
4	1122151	1	Beveled Retainer Ring
5	111291	1	Upper Pulley (Large) - 126 Tooth
6	111290	1	Bushing for large pulley
7	111214	1	Motor Assembly - 230V 60Hz, 1ph
	111213	1	Motor Assembly - 230V 60Hz, 3ph
	111212	1	Motor Assembly - 208V 60Hz, 3ph
	111225	1	Motor Assembly - 220V 50Hz, 3ph
	111525	1	Motor Assembly - 380V 50Hz, 3ph
	111526	1	Motor Assembly - 415V 50Hz, 3ph
8	1100047	4	HHC Screw for Motor Mounting - 3/8-16x1.5
	1187764	4	3/8 Lockwasher for Motor and Suspension Mounting
	1100256	10	3/8 #10 Flat Washer for Motor and Suspension Mounting
9	111172	1	Drive Pulley for 60 hz - 26 Tooth
	111223	1	Drive Pulley for 50 hz - 32 Tooth
10	61461	1	Run Capacitor - 1PH
11	111472	1	Start Capacitor - 1PH, 88-106uf
	111521	1	Start Capacitor - 3PH, 72-88uf
12	111206	1	Capacitor Bracket
13	1101651	2	Hose Clamp
14	111182	1	Drive Belt
15	110503	1	Shaft Encoder - 400 count
	86063	3	Shaft Encoder - 512 (to be used in all 7.6 Balancers or rev 7.09 rev d and up)
	111166	1	Encoder Harness - all units
16	111181	1	Anti-rotation Arm
	1122037	1	Set Screw - #10-24x .125" hollow core
17	111175	1	Anti-rotation Bracket
18	1111601	2	HHC Screw 1/4-20x1.75" (For antirotation and capacitor brackets)
	1101540	2	KEPS Nut 1/4-20 external tooth
	1101846	2	1.5" Rubber Grommet
19	111103	2	Transducer Assembly
20	111285	2	3/8 (.375) diameter ceramic ball
21	111286	2	7/32 (.218) diameter ceramic ball
22	111180	2	Transducer adjustment screw
23	1109587	2	Jam Nut, 3/8-24 hex

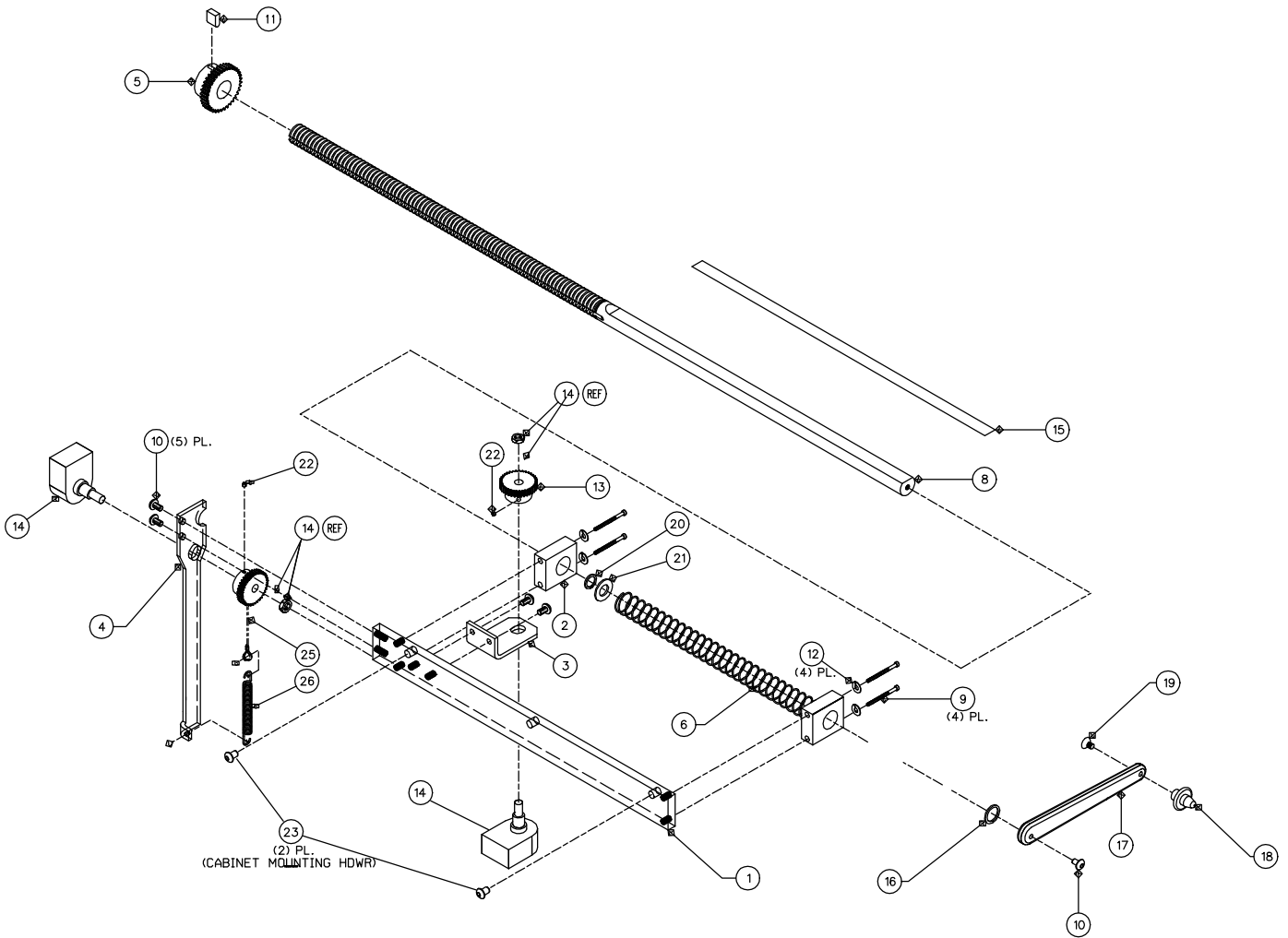


Hood Guard Assembly



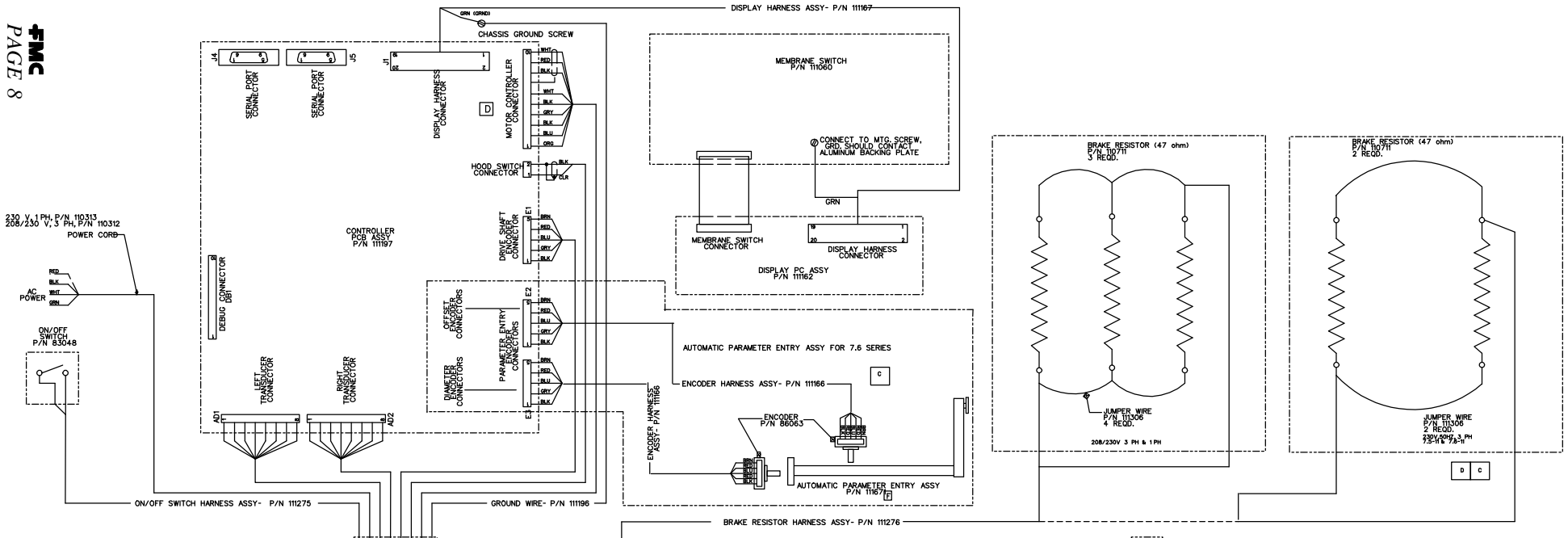
<u>Item</u>	<u>Part Number</u>	<u>Quantity</u>	<u>Description</u>
1	110757	1	Wheel Guard Cover
2	110963	1	Wheel Guard Frame
3	1101710	8	10-24 Self Tap Screw
4	61746	8	Weight Tray Washer
5	1115810	2	10-24x1/2, RHMS Screw
6	111227	1	Micro Switch Cam
7	111235	1	Wingnut Bracket
8	1100243	1	3/8 Lockwasher
9	1121509	1	3/6-16 Nut
13	1185489	2	#10 Lockwasher
14	1119962	2	1/4 Flat Washer

Semi Auto Parameter Entry Assembly (SAPE) FMC P/N - 111426



Ref. Num.	Part Number	Qty. Used	Description	Ref. Num.	Part Number	Qty. Used	Description
1	111427	1	Base Plate	21	1107386	1	Flat Washer - 5/8"
2	111428	2	Bushing Block	22	1112813	2	Set Screw - 6-32 x 1/8
3	111429	1	Encoder Bracket for Distance	23	1187794	2	Screw, BHC, 1/4-20x5/8
4	111431	1	Encoder Bracket for Diameter	24*	111166	2	Harness Assembly for Encoders
5	111437	1	Gear - 36 Tooth	25	111584	1	Anti-backlash Cable
6	111438	1	Compression Spring	26	111583	1	Anti-backlash Spring
8	111424	1	Rod - Distance Gauge	27*	61278	1	Cable Tie
9	1112283	4	Screw - SHCS - 10-24x1 1/2				
10	1101726	5	Screw - BHCS - 10-24 x 1/2				
11	111439	1	Brass Key				
12	1100240	4	Split Lock Washer				
13	111440	2	24 Tooth Gear				
14	86063	2	Encoder - 512 Count				
15	111267	1	Distance Gauge Label				
16	1122195	1	O-Ring, 5/8 ID x .139 wall				
17	111155	1	Distance Gauge Arm				
18	111154	1	Contact for Distance Gauge				
19	1122165	1	Screw, HS, 10-24x3/4				
20	1101729	1	Retaining Ring for 5/8 shaft				

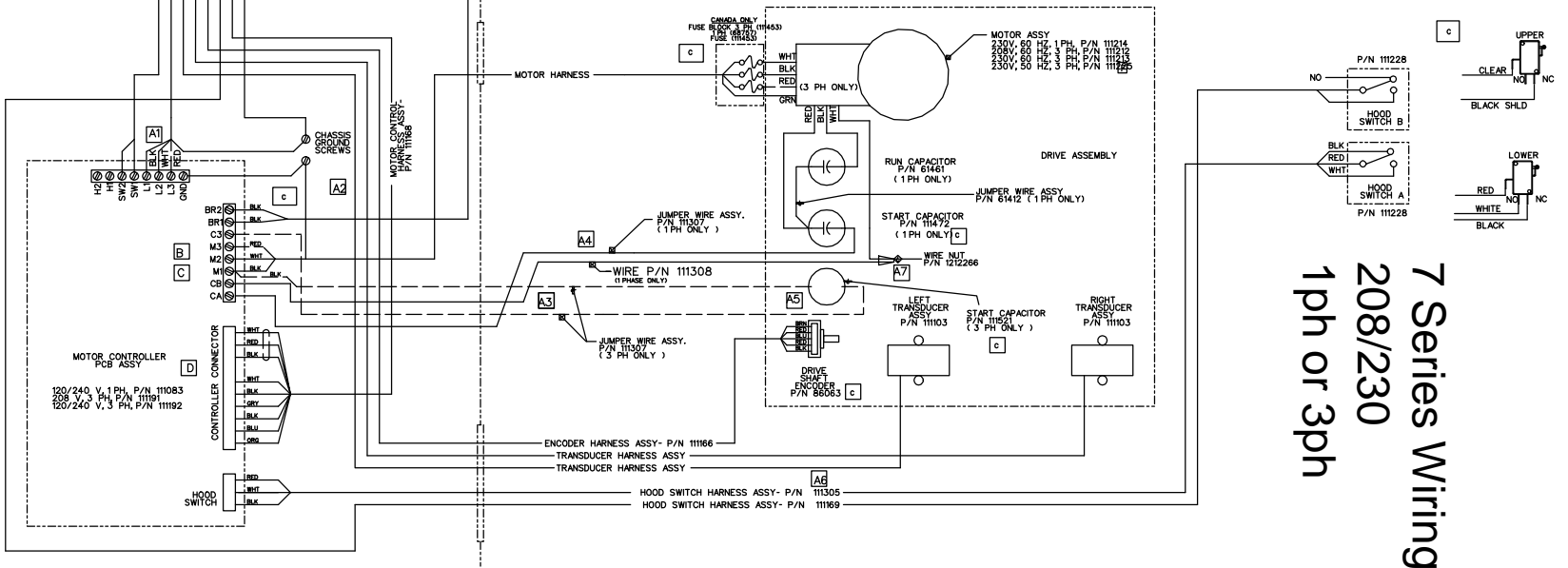
* Not Shown



MATRIX CHART FOR MOTOR ASSY & CONTROLLER

MODEL	POWER	MOTOR ASSY	START CAP P/N	RUN CAP P/N
7.X-0	230/3PH/60HZ	11213	72-86uF 11521	N/A N/A
7.X-CA	230/3PH/60HZ	11484	72-86uF 11521	N/A N/A
7.X-1	230/3PH/60HZ	11214	88-106uF 11472	50uF 61461
7.X-CA1	230/3PH/60HZ	11487	88-106uF 11472	50uF 61461
7.X-8	208/3PH/60HZ	11212	72-86uF 11521	N/A N/A
7.X-CA8	208/3PH/60HZ	11465	72-86uF 11521	N/A N/A
7.X-10	230/3PH/50HZ	11579	89-208uF 11578	50uF/37011577
7.X-11	230/3PH/50HZ	11225	72-86uF 11521	N/A N/A

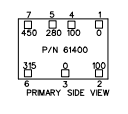
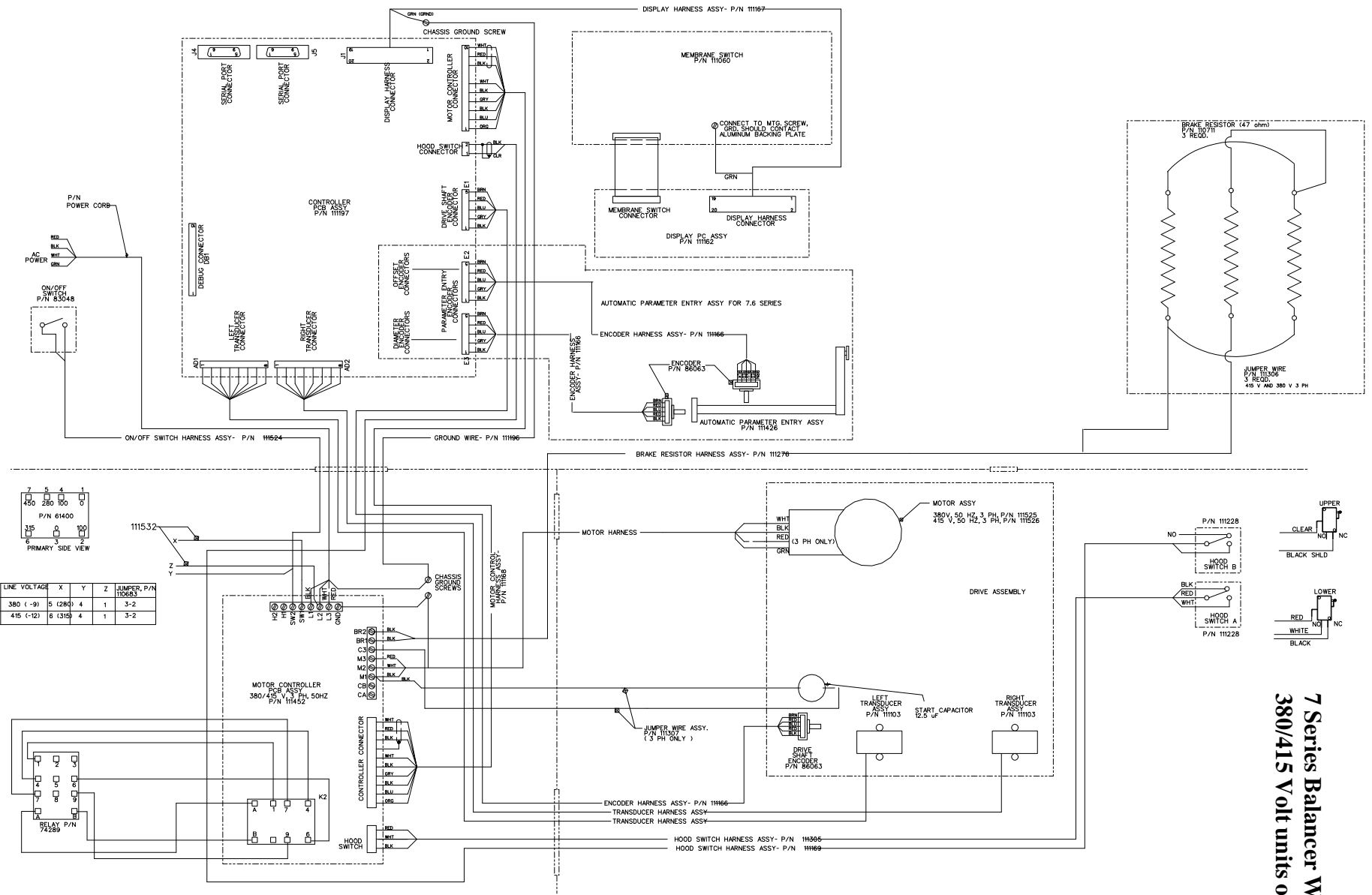
*7.X- designation can be for A, B or S MODEL



7 Series Wiring

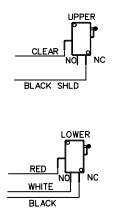
208/230

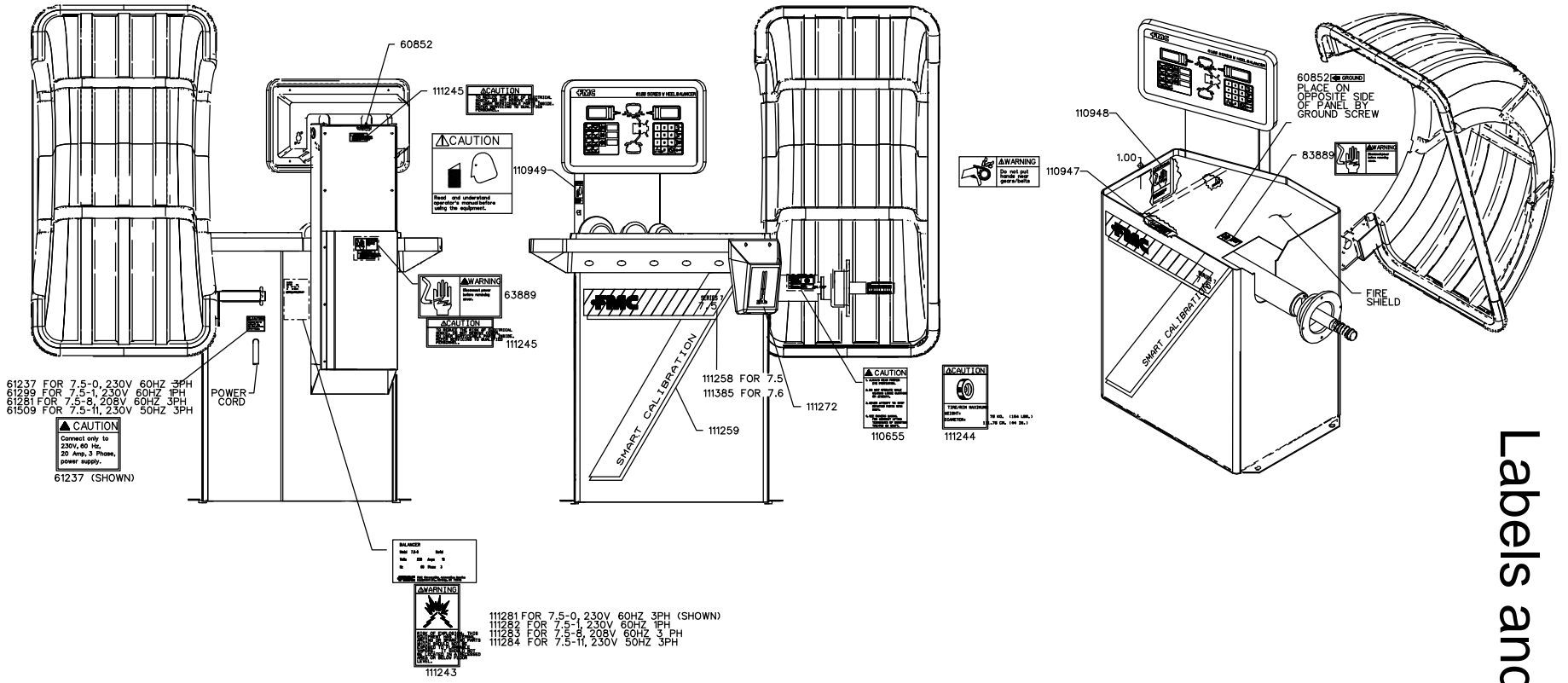
1ph or 3ph



LINE VOLTAGE	X	Y	Z	JUMPER, P/N 10683
380 (-9)	5 (280)	4	1	3-2
415 (-12)	6 (315)	4	1	3-2

7 Series Balancer Wiring
380/415 Volt units only





Labels and Decals