

FMC

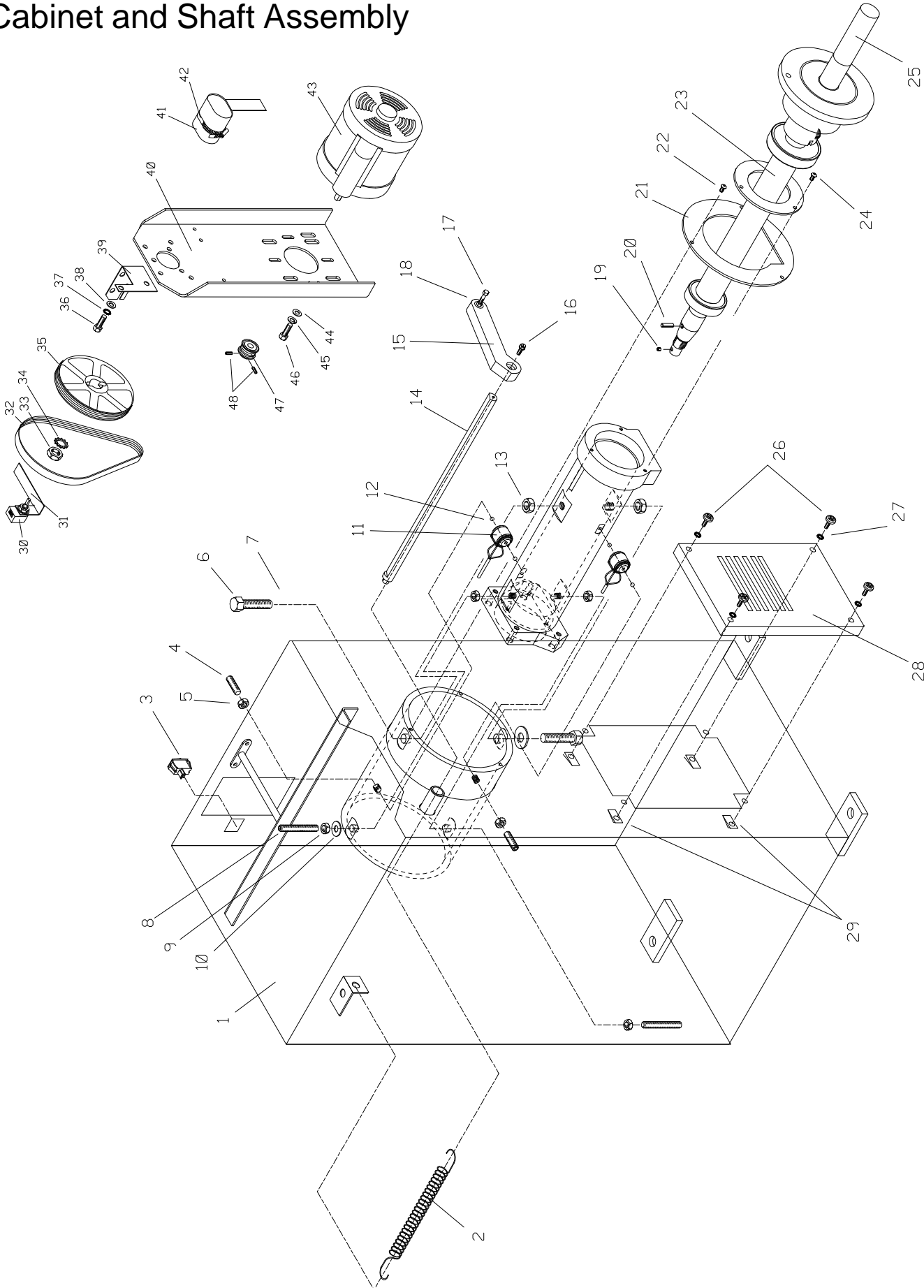
Parts Reference

5.1 Series Computerized Wheel Balancer



FORM 5163

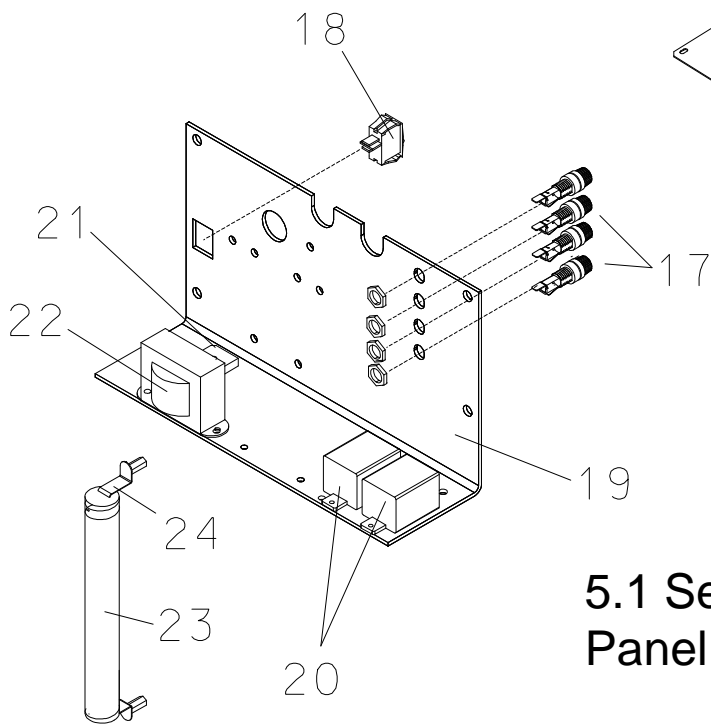
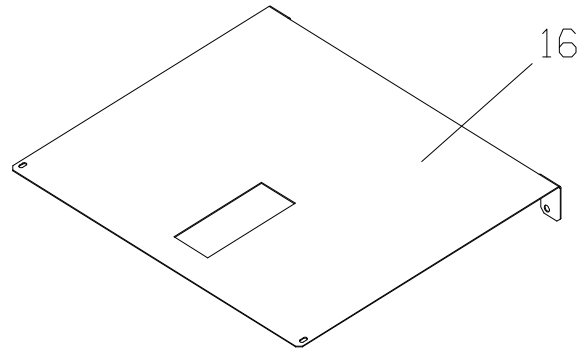
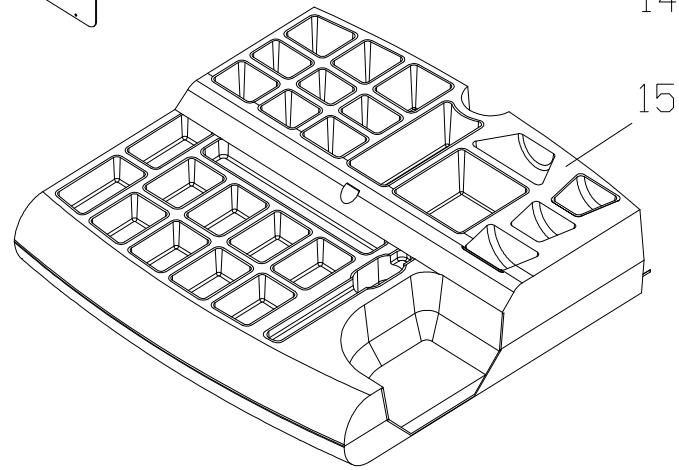
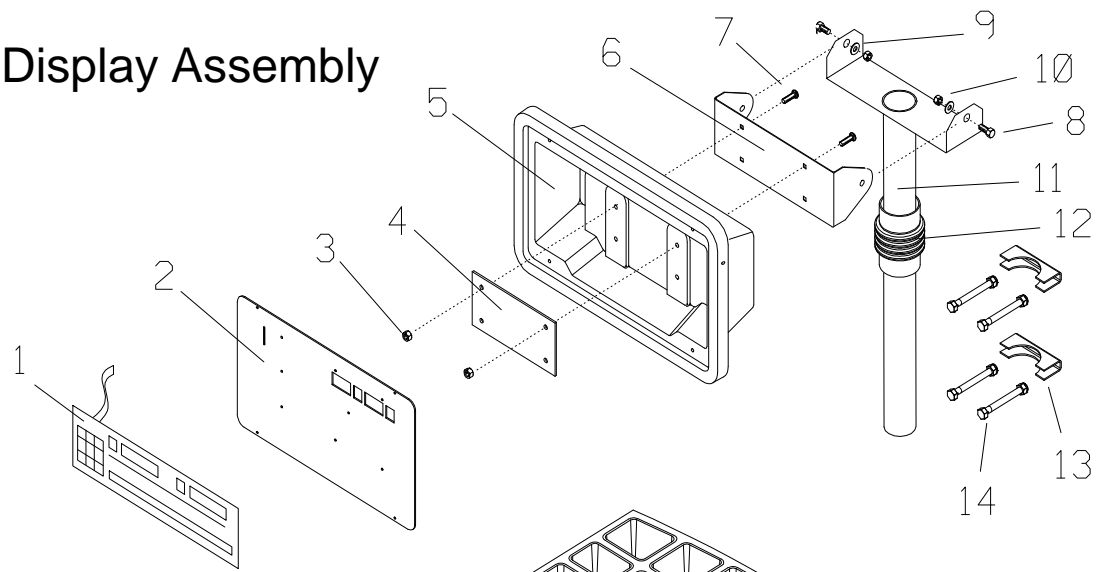
Cabinet and Shaft Assembly



Ref No	No.	Req'd No.	Part No.	Description
1	1		110262	Base Weldment
2	1		61539	Distance Gauge Spring
3	1		83048	On/Off Switch
4	2		1101717	3/8 - 16 x 1.0" screw
5	2		1121551	3/8 - 16 Jam Nut
6	2		1101727	1/2 - 13 x 2 - 1/4" Setscrew
7	2		1119966	1/2" Brass Flat Washer
8	2		1103523	3/8 - 16 x 2 - 1/2" Setscrew
9	2		1121551	3/8 - 16 Jam Nut
10	2		1107383	3/8" Flat Washer
11	2		111673	Transducer Assembly
12	2		111286	7/32" Aluminum Ball
13	2		1121553	1/2 - 13 Jam Nut
14	1		61541	Distance Gauge Rod
15	1		61540	Distance Gauge Extension
16	1		1101710	10 - 24 x 5/8 self tap screw
17	1		1100807	1/4 - 20 x 2" HHC Screw
18	1		1121507	1/4 - 20 Hex Nut
*	1		61751	Distance Guage Assembly, includes items 14 - 18
19	1		1122210	Set screw, 10 -24 x .25
20	2		1120210	3/16 Roll Pin
21	1		61935	Suspension Tube Cap
22	2		1115810	10 - 24 x 1/2" Screw
*	2		1187949	#10 Int Tooth Lockwasher
23	1		61569	Shaft and Bearing assembly - Domestic
	1		111780	Shaft and Bearing assembly - Export
24	3		1112276	#10 - 24 x 3/8" SHCS Screw
25	1		61379	Stub Shaft
26	4		1115810	#10-24x1/2" Screw
27	4		1187949	#10 Int. Tooth Lockwasher
28	1		61899	Fan Support Plate
29	4		1101567	Tinnerman nut
30	1		110557	Encoder
31	1		110761	Encoder Mount
32	1		61728	Drive Belt
33	1		1109591	5/8 - 18 Jam Nut
34				
35	1		61634	Large Pulley
36	2		1100046	3/8 - 16 x 1" Hex Cap Screw
37	2		1187764	3/8" Lock Washer
38	2		1107383	3/8" Flat Washer
39	1		110762	Encoder Anti-rotation Bracket
40	1		110172	Motor Mount Weldment
41	1		61765	Run Capacitor - 115 volt (25uf 370v)
*	1		110900	Run Capacitor - 230 volt (25uf 370v)
42	1		60578	Hose Clamp
43	1		61949	Drive Motor Assembly, 115 volt
*	1		110034	Drive Motor Assembly, 230 volt
44	4		1100046	Screw, HHCS, 3/8-16x1
45	4		1187764	Lock Washer, 3/8
46	1		61727	Small Drive Pulley (60 Hz)
47	2		1103444	1/4 - 20 Set screw

* NOT SHOWN

5.1 Series Display Assembly



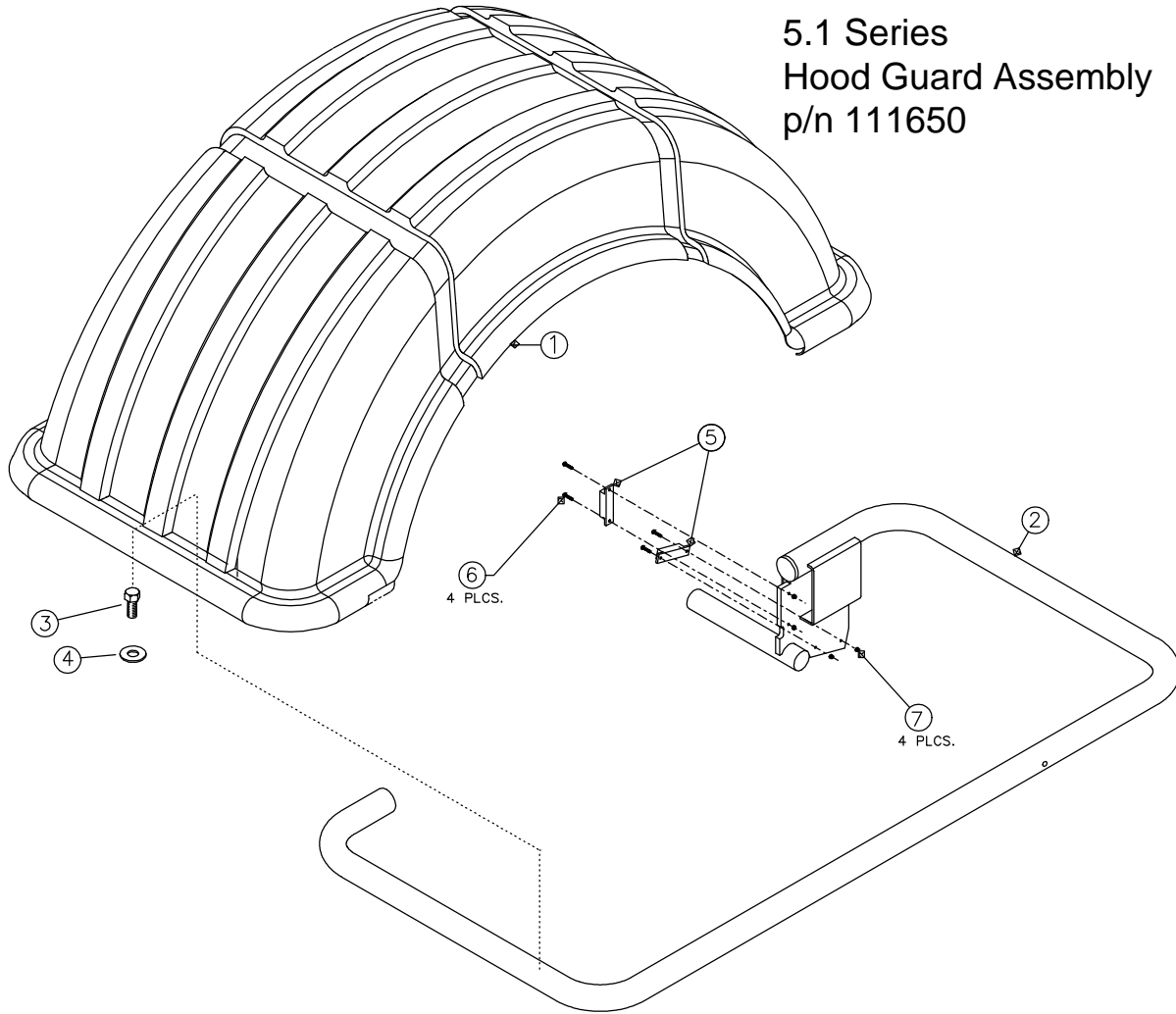
5.1 Series Power Panel Assembly

<u>Ref No</u>	<u>Part</u>	<u>Description</u>
<u>No.</u>	<u>Req'd</u>	<u>No.</u>
1	1	61538 Touch Panel
*	1	111658 Display Decal
*	1	111762 Computer PCB
*	8	61649 Hex Spacer, #10-24x7/16
*	8	61712 Hex Spacer, #10-24x .344
*	1	111657 Display Assembly, includes items above plus item #2
2	1	111656 Panel Mounting Plate
3	4	1101609 1/4 -20 Nut
*	4	1107381 1/4 Flat Washer
4	1	111124 Display Hsg Mounting Plate
5	1	111614 Display Housing
6	1	111123 Display Mounting Bracket
7	4	1100178 1/4 - 20 Carriage Bolt
8	2	1100046 Screw, HHCS, 3/8 - 16 x 1.0
9	2	1100256 3/8 Flat Washer
10	2	1120256 3/8 - 16 ESNA Nut
11	1	111636 Display Support Tower
12	1	111399 Bellow Cover
13	2	111790 Tower Clamp
14	4	1111610 5/16 - 18 x 3 HHC Screw
*	4	1101804 5/16 -18 ESNA Nut
15	1	111574 Weight Tray
	2	1/4 - 20 X 3 1/4 SHCS
16	1	111655 Fire Shield
17	5	64087 Fuse Holder
*		74105 Fuse, 1 amp slow blow
*		74085 Fuse, 15 amp fast acting
18	1	83048 On/Off Switch
19	1	111641 Electrical Panel Weldment
20	2	61644 Relay
*	1	61174 Contactor - 230 volt units
21	1	110004 Bridge Rectifier - 115 volt
*	1	110005 Bridge Rectifier - 230 volt
22	1	110071 Transformer - 115 v
*	1	110072 Transformer - 230 v
*	1	110073 Transformer - 100 v
*	1	111647 Transformer - 220-240 v export
23	1	61654 Brake Resistor, 16 Ohm
24	2	61653 Resistor Mounting Bracket
*	2	61121 Standoff, # 10-32
*	2	1117021 #10-32x1/2 screw
*	2	1114741 #10-32x3/8 screw
*	1	111665 Corrugated Plastic Tubing Loom, 6ft.
*	2	111763 Connector Strain Relief
*	1	70296 Snubber board, (230 volt units)
*	2	61831 Magnetic Interlock Switch

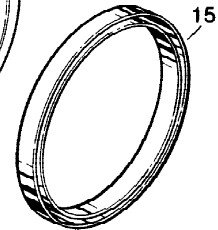
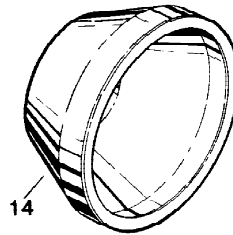
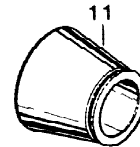
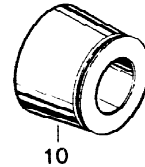
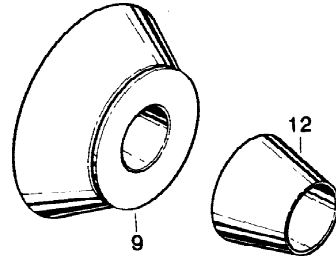
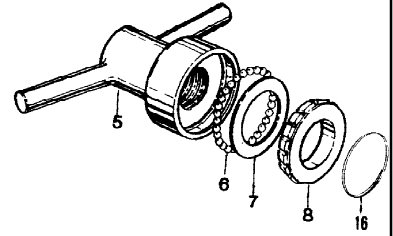
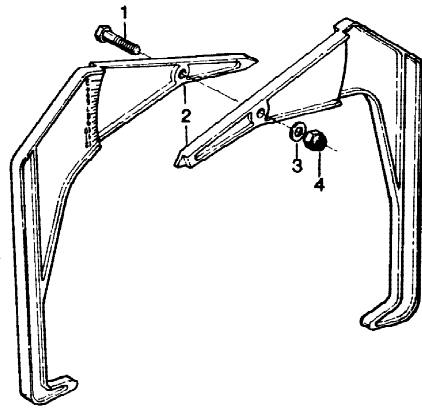
- 61830 Switch Cover	
Wiring Harnesses	
<u>Part Number</u>	<u>Description</u>
111669	PCB Harness Assembly, marked "Power"
61735	Harness Assembly, 13" resistor/bridge
61705	Harness Assembly for Relay
61697	7" Jumper
61701	5" White Jumper
61702	5" Black Jumper
2511355	Power Cord
111116	Switch Harness Assembly
111664	Encoder Cable, Domestic
111668	Encoder Cable, Export
111654	Interlock Switch Cable
82820	Jumper assembly breaker to switch

* NOT SHOWN

5.1 Series
Hood Guard Assembly
p/n 111650



Ref No.	No Req'd	Part No.	Description
1	1	110757	Wheel Guard Cover
2	1	111662	Wheel Guard Frame
3	8	1101710	10-24 Self Tap Screw
4	8	61746	Washer, Black
5	2	61829	Interlock Switch Magnet
6	4	1115705	6-32 x 5/8 Screw, RHMS
7	4	1109764	Nut, - Hex, 6-32
8	2	61985	Warning Label



5.1 Series Standard Accessories

Ref No.	No Req'd	Part No.	Description
1	1	1100086	3/16-16x1-3/4" HHC Screw
2	2	61122	Rim Width Gauge Arm
3	1	1107383	3/8" Flat Washer
4	1	1120240	3/8-16 Light ESNA Nut
5	1	61789	Machined Wing Nut
6	27	1177138	1/4" Dia. Steel Ball
7	1	61071	Wing Nut Bearing Insert
8	1	61068	Wing Nut Bearing Housing
9	1	60781	Truck Cone
10	1	61252	Large Cone
11	1	61253	Small Cone
12	1	61476	Special Small Cone
13	1	61075	Conical Spring
14	1	61076	Retainer Cup
15	1	61077	Plastic Retainer Ring
16	1	1101803	Spiral Ring
*	1	110563	Calibration Weight
*	1	4909	FMC Accessories Literature
*	1	5162	Operators Manual 5.1 Series Series
*	1	61072	Wing Nut Assembly
*	1	61123	Rim Width Gauge Assy
*	1	1101794	5/16x1-1/2" Roll Pin
*	3	61750	Anchor Stud
*	1	61993	Accessory Pack (Domestic)

NOTE: Items 6, 7, 8, and part numbers 110144 & 1101803 are part of Wing Nut Repair Kit, Part No. 110145.

* NOT SHOWN

Labels and Decals



**USA**

FMC Automotive Service Equipment Division
309 Exchange Ave.
Conway, Arkansas 72032
Tel.: 1-800 FMC-TEAM or (501) 450-1500
Fax: (501) 450-1585

IRELAND

FMC Automotive Service Equipment Division
Sitecast Industrial Estate
Little Island, Cork
Tel: 021 354477
Fax: 021 354530

GERMANY

FMC Auto Service Geräte
Westerwaldstrasse 36
D-35722 Herborn
Tel: 02772-51098
Fax: 02772-52144

FRANCE

FMC Equipment Automotive
Z.I. Du Haut Galy
93602 Aulnay S/S Bois
Tel: 1/4865-3828
Fax: 1/4865-7331

SOUTHEAST ASIA

FMC Southeast Asia PTE LTD
149 Gul Circle
Singapore 9161
Tel: 65/861-3011
Fax: 65/862-0527

CANADA

FMC of Canada LTD
2844 Slough Street
Mississauga, Ontario L4TL63
Tel: (905) 672-2600
Fax: (905) 672-2126