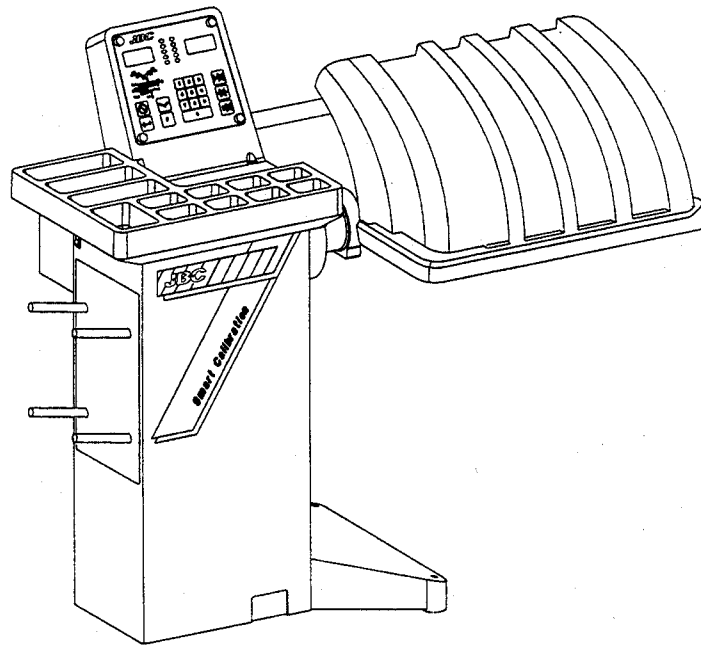


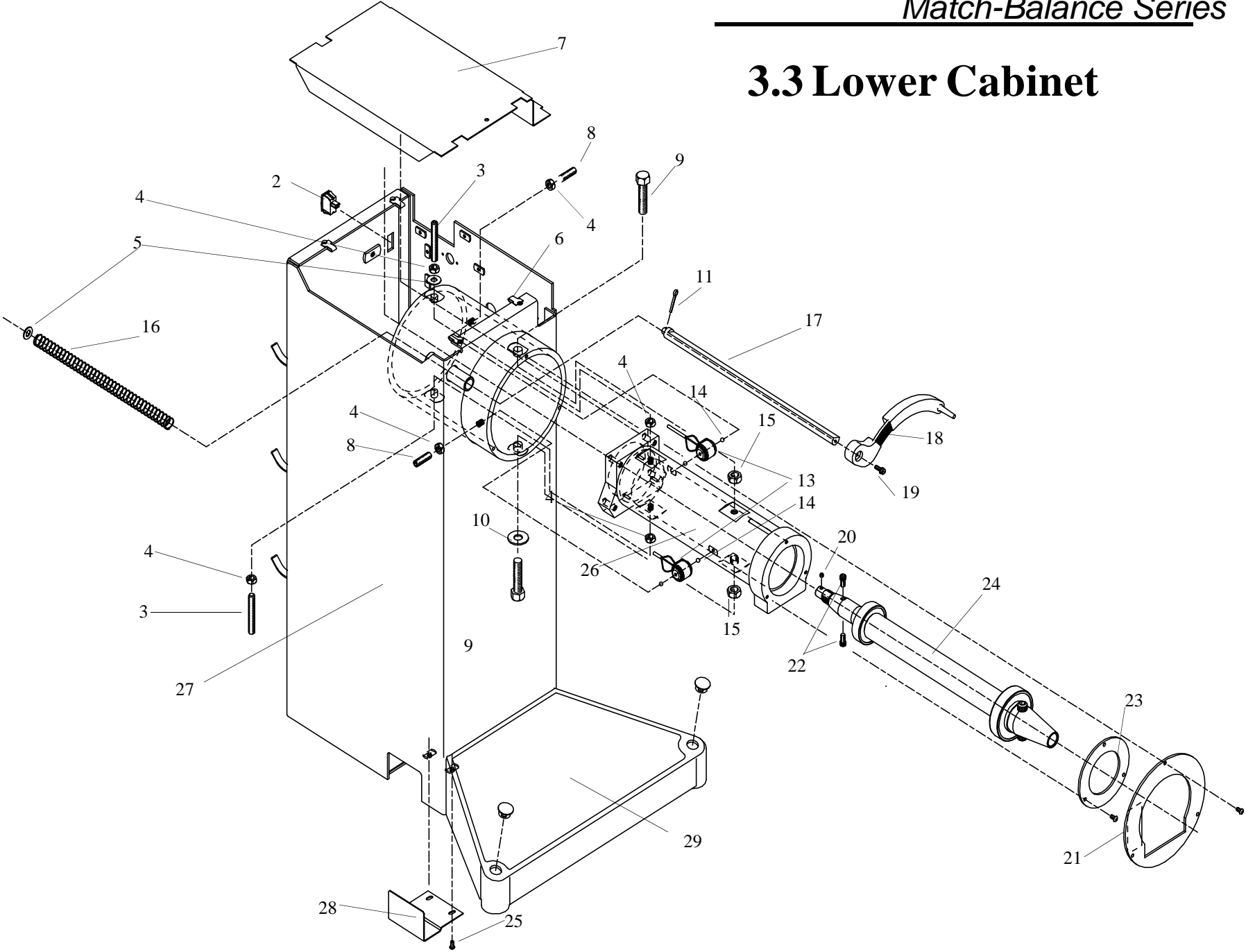
*John*  
**BEAN**  
*Company*

# Model 3.3 Balancer Parts Reference



Form 5175-1

# 3.3 Lower Cabinet



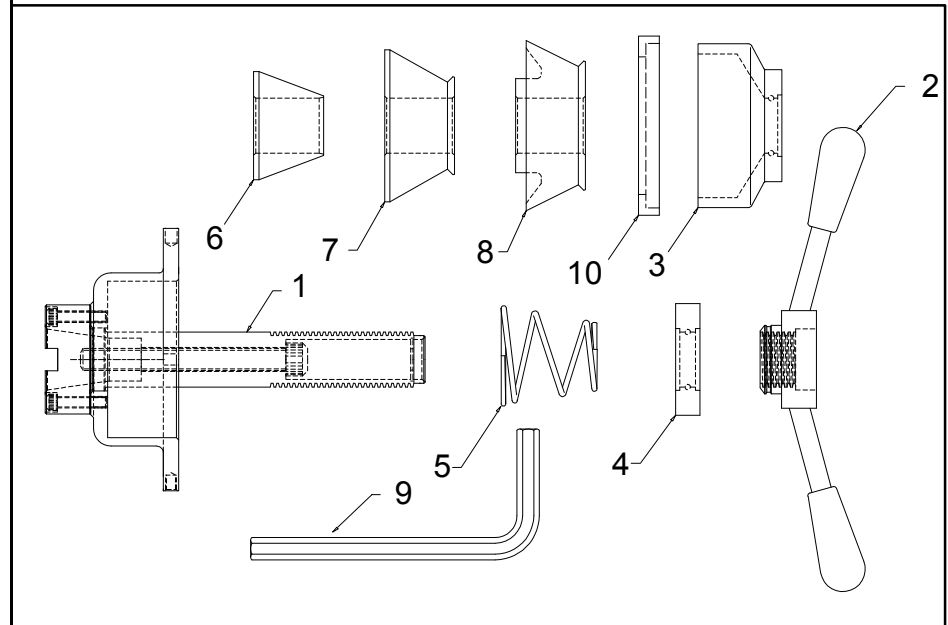
# 3.3 Lower Cabinet

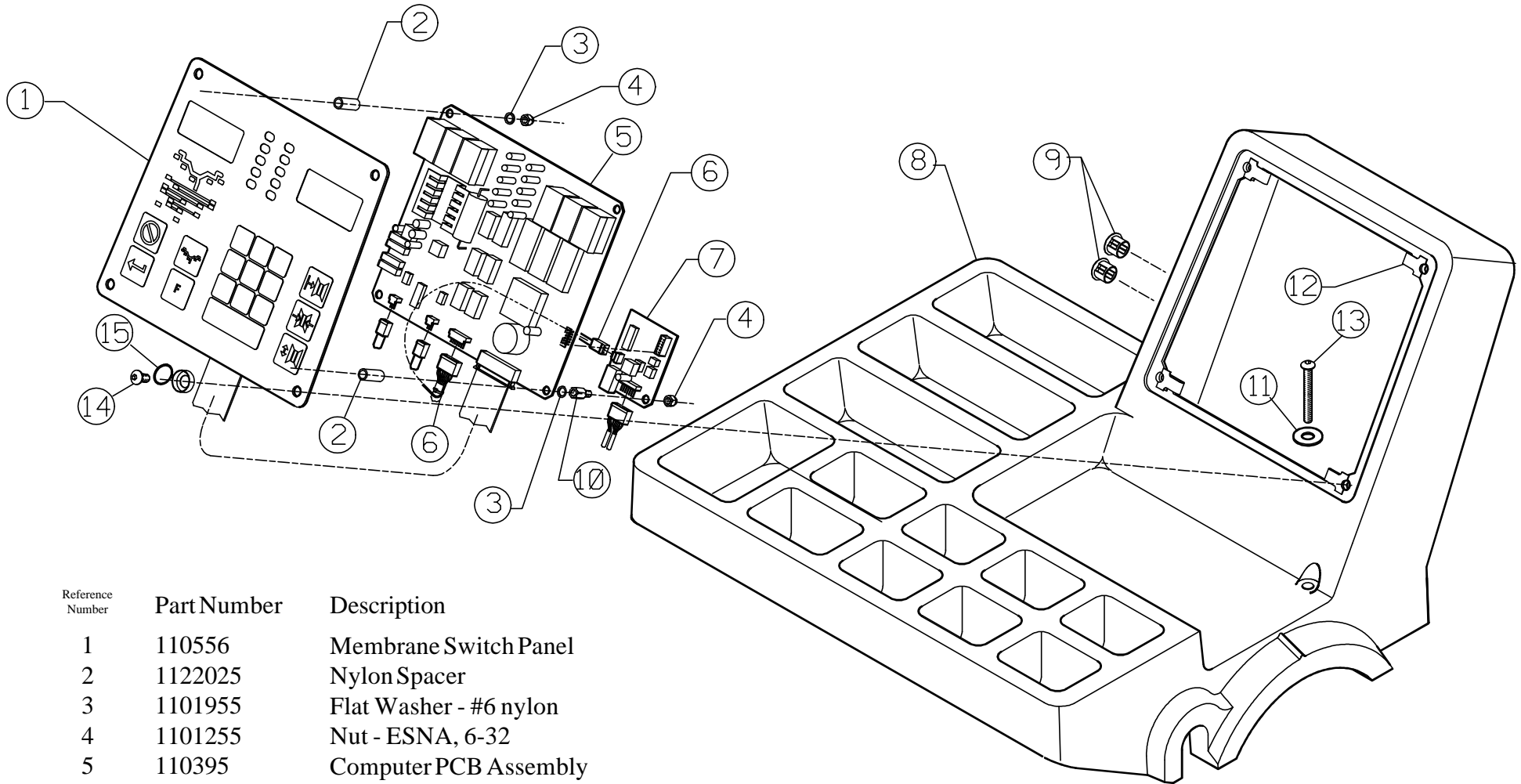


Reference Number	Part Number	Description
1	110940	Test and Calibration Weight
*	111087	Bracket for calibration weight
2	110555	On/Off Power Switch
3	1103523	Set Screw - 3/8-16x2.5
4	1121551	Jam Nut - 3/8x16
5	1107383	Flat Washer - 3/8 SAE
6	1122027	Tinnerman Nut - 1/4-20
7	110640	Fire Shield
8	1101717	Set Screw - 3/8-16x1.00
9	1101728	Screw - HHC, 1/2-13x2.25
10	1119966	Washer - Brass, 7/16
11	1100346	Cotter Pin
12	na	na
13	111059	Transducer Assembly
14	1177856	Ball - 7/32 diameter
15	1121553	Jam Nut - 1/2-13
16	61243	Spring for Distance Gauge
17	110536	Distance Gauge Rod
18	110535	Distance Gauge Extension Arm
19	1101710	Screw - Thread Cutting - 10-24x.625
20	1122037	Set Screw - 10-24x.125
21	61937	Cap Assembly for Suspension Tube
22	1101726	Screw - Button Head Cap - 10-24x.5
23	61185	Bearing Clamp
24	110551	Shaft and Bearing Assembly
25	1110817	Screw - Socket Head Cap - 1/4-20 x .375
26	110159	Bearing Tube
27	110628	Cabinet Assembly
28	110654	Pedal Opening Cover
29	110509	Protective Foot Mat
*		Not Shown

## 110691 Haweka Adapter Kit Parts List

Reference Number	Part Number	Description
1	110558	Basic Centering Device
2	110690	Wing Nut
3	110595	Clamping Hood
4	110596	Pressure Ring
5	110597	Spring, long
6	110559	Centering Cone 1.65-3.15" (42-80MM)
7	110560	Centering Cone 2.91-4.41" (75-110MM)
8	110561	Centering Cone 3.74-4.90" (95-124MM)
9	110573	Allen Wrench (12MM)
10	110410	Rubber Protective Ring for #3

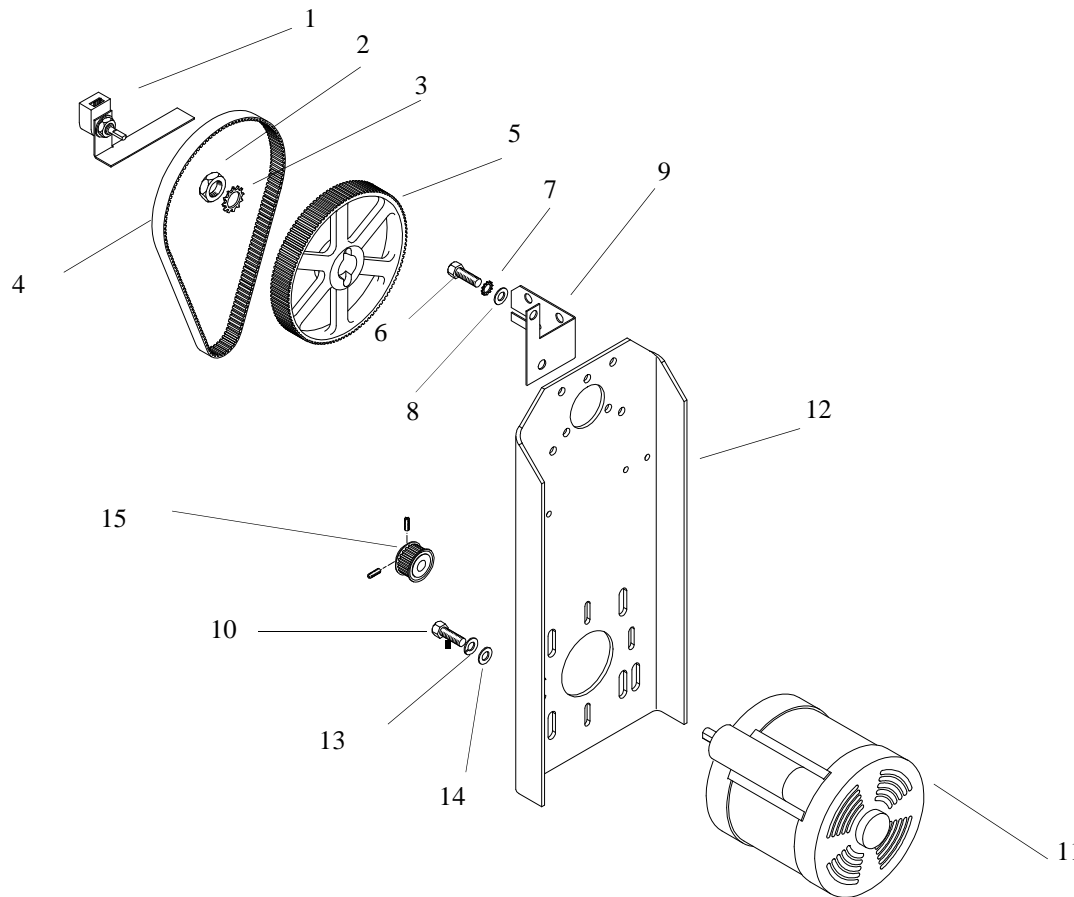




Reference Number	Part Number	Description
1	110556	Membrane Switch Panel
2	1122025	Nylon Spacer
3	1101955	Flat Washer - #6 nylon
4	1101255	Nut - ESNA, 6-32
5	110395	Computer PCB Assembly
6	110637	Encoder Wiring Harness
7	110381	Motor Adapter PCB
8	110500	Weight Tray
9	83207	Hole Plug
10	1122054	Hex Standoff - (male/female) 6-32x.375
11	1101930	Flat Washer, 1/4 Black Oxide
12	1122027	Tinnerman Nut 1/4-20
13	1122026	Screw - Button Head Cap - 1/4-20x2
14	1187794	Screw - Button Head Cap - 1/4-20x .625
15	1122077	Screw Cover - Hinged, 1/4" black

### 3.3 Match-Balancer upper console parts

### 3.3 Motor-Drive Assembly

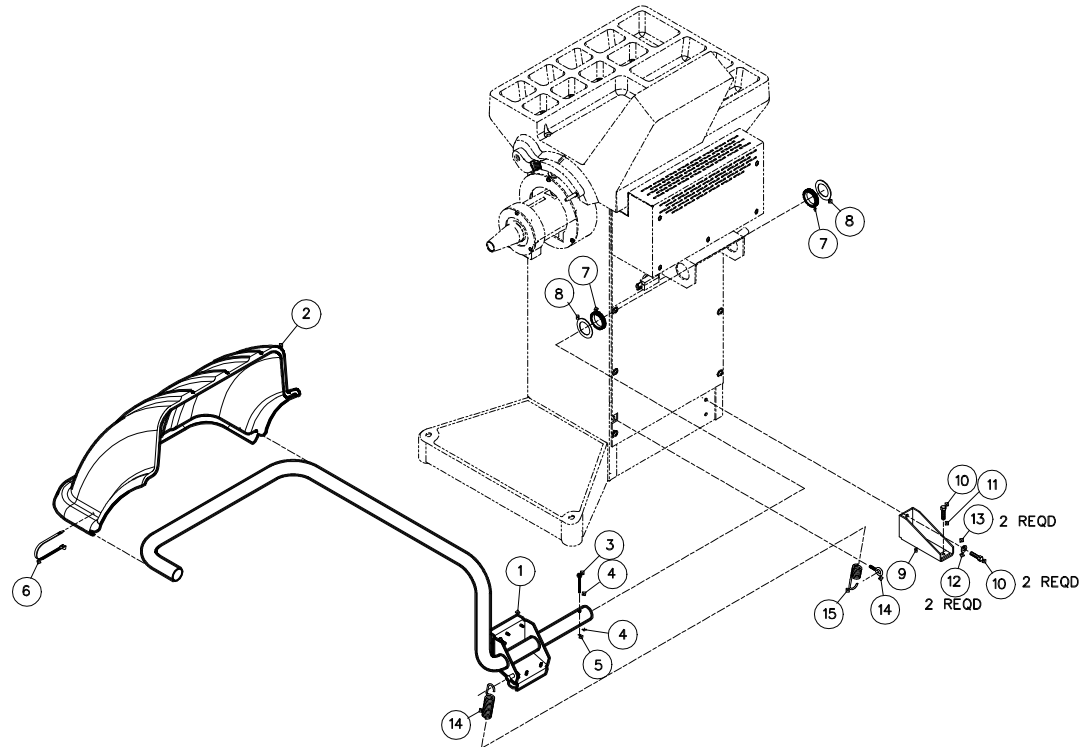


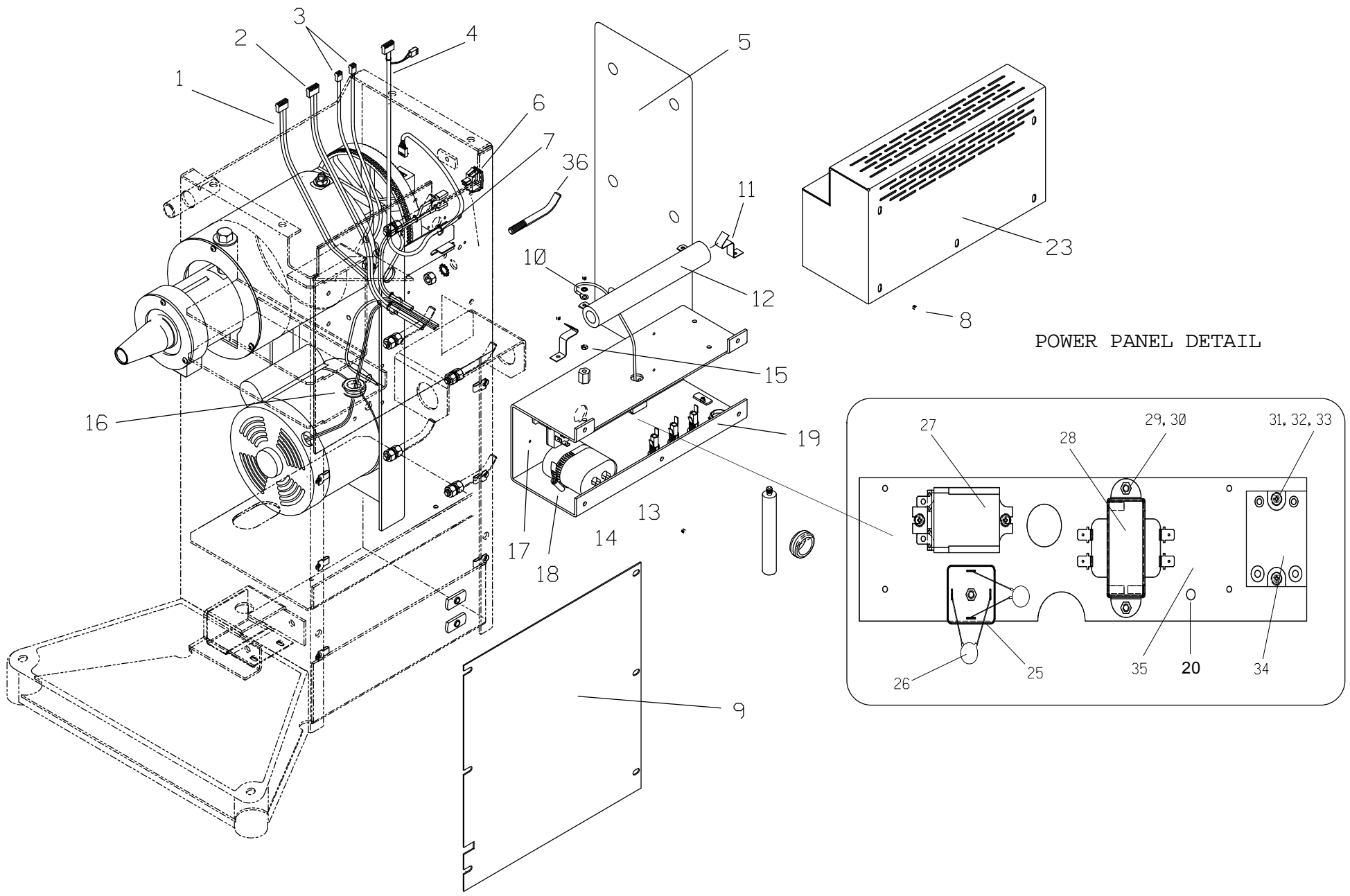
1	110553	Encoder Assembly
2	1109592	Jam Nut, 3/4-16
3	1103999	Lock Washer, 3/4
4	110791	Drive Belt
5	110554	Upper Pulley
6	1100046	Screw, Hex Head Cap, 3/8-16x1
7	1187764	Lock Washer, 3/8
8	1107383	Flat Washer, 3/8 SAE
9	110651	Anti-Rotate Bracket for Encoder
10	1100046	Screw HHC 3/8-16 x 1
11	111264	Motor - 1/2 HP, 115v/230V
12	110790	Motor Mount weldment
13	1100243	3/8 " Spring Lock Washer
14	1107383	3/8" Flat Washer
15	110981	60hz Drive Pulley, includes setscrews
	110982	50hz Drive Pulley, includes setscrews

### 3.3 Motor-Drive Assembly

# Hood Guard Assembly 110798

Reference Number	Part Number	Description
1	110755	Wheel Guard Frame
2	110756	Wheel Guard Cover
3	1112285	Screw, SHC, 10-24 x 2.00
4	1100253	#10 Flat Washer
5	1177576	10-24 Nut
6	1122136	Nylon Tie-Rap
7	110759	Grommet
8	110774	Flat Washer
9	110776	Stabilizer Foot
10	1100799	Screw, HHC, 5/16-18 x 1.50
11	1121550	Hex Jam Nut, 5/16 - 18
12	1100242	5/16 Lock Washer
13	1107382	5/16 Flat Washer
14	110793	Eye Bolt, 1/4-20 x 1.00
15	110792	Spring
*	61829	Magnet
*	61830	Cover
*	61831	Interlock Switch
*	61265	Nutsert #6 - 32
*	110780	Nylon Shoulder Washer
*	1101964	Screw 6x32x 5/8 BHCS
*	1122135	Nylon Spacer
*	1177246	Lock Washer





### 3.3 ELECTRICAL PARTS and Wiring

# Wiring and Electrical Parts

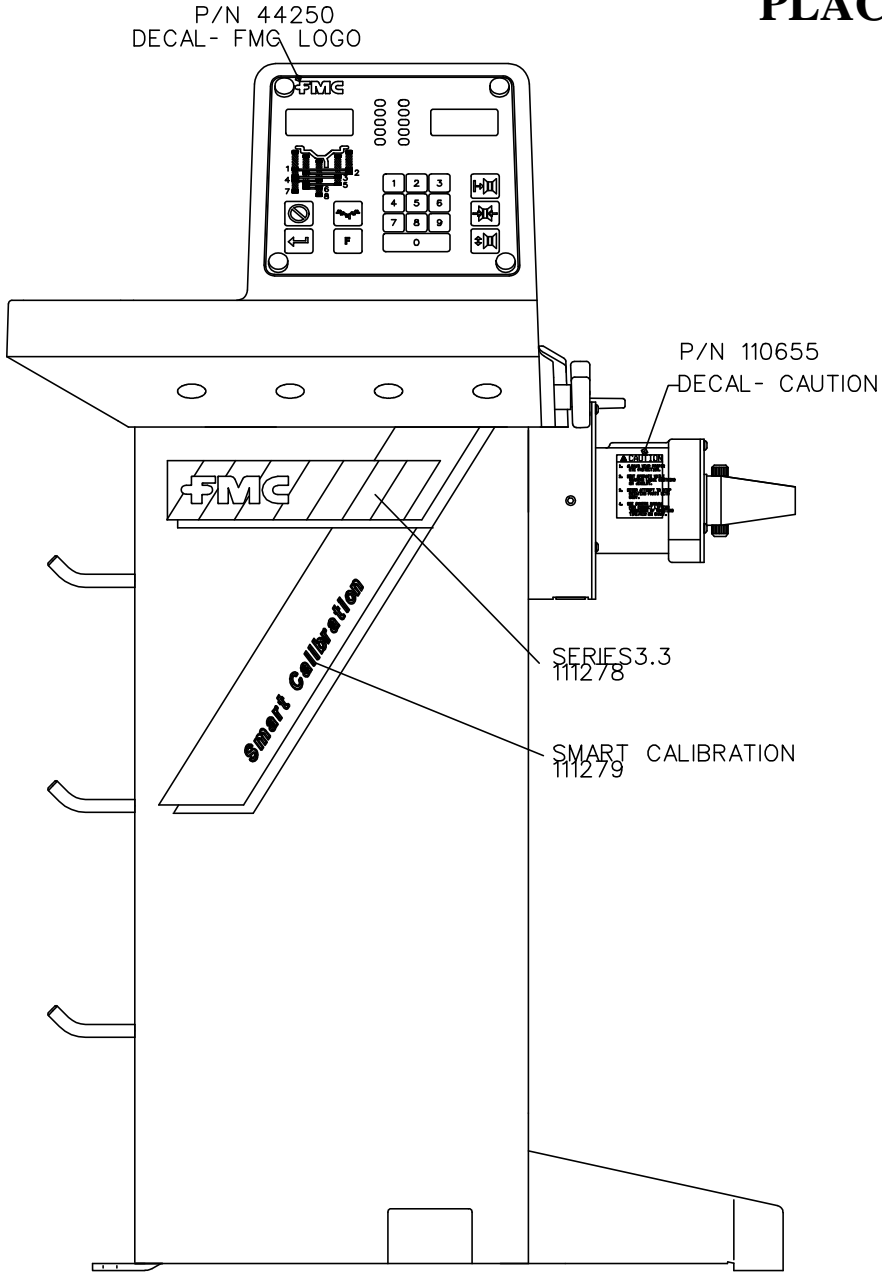
Reference Number	Part Number	Description
1	110735	Wheel Guard Harness
2	110666	Power Harness
3	111059	Transducer Harness Assembly
4	110637	Encoder Harness Assembly
5	110508	Accessory Matt
6	110555	Power Switch
7	64383	Cable Tie
8	1101726	Button Head Cap Screw, 10-24x1/2
9	110639	Panel Cover
10	1187949	Lock Washer, #10
11	61653	Mounting Clip for Resistor
12	61654	Brake Resistor
13	61704	Run Capacitors, Uses Two
14	110683	Jumper Wire with connectors
15	1101479	KEPS Nut - 10-24 THD
16	87142	One Inch Hole Grommet
17	1122056	Pop Rivet, 1/8x5/16
18	60578	Hose Clamp
19	110727	Power Supply Assembly
20	69836	Ground Screw
21	1187794	Screw BHC 1/4-20 x .625
22	64087	Fuse Holder
23	110658	Power Supply Cover
24	1101930	Flat Washer, 1/4 black oxide
25	110004	Bridge Rectifier, 115v -(includes MOVs)
	110005	Bridge Rectifier, 230v -(includes MOVs)
26	70533	MOV - 150volt
27	74153	Relay, DPDT 24 volt

Reference Number	Part Number	Description
28	110383	Transformer
29	1122051	Press in stud, 6-32x.50
30	1101255	KEPS Nut 6-32
31	1177246	Lock Washer #6
32	1101532	Screw - 6-32x3/8 PHP
33	62125	Nutsert - 6-32
34	74155	Solid State Relay
35	110693	Power Supply Subplate
36	110744	Storage Peg
*	110744	Power Cord

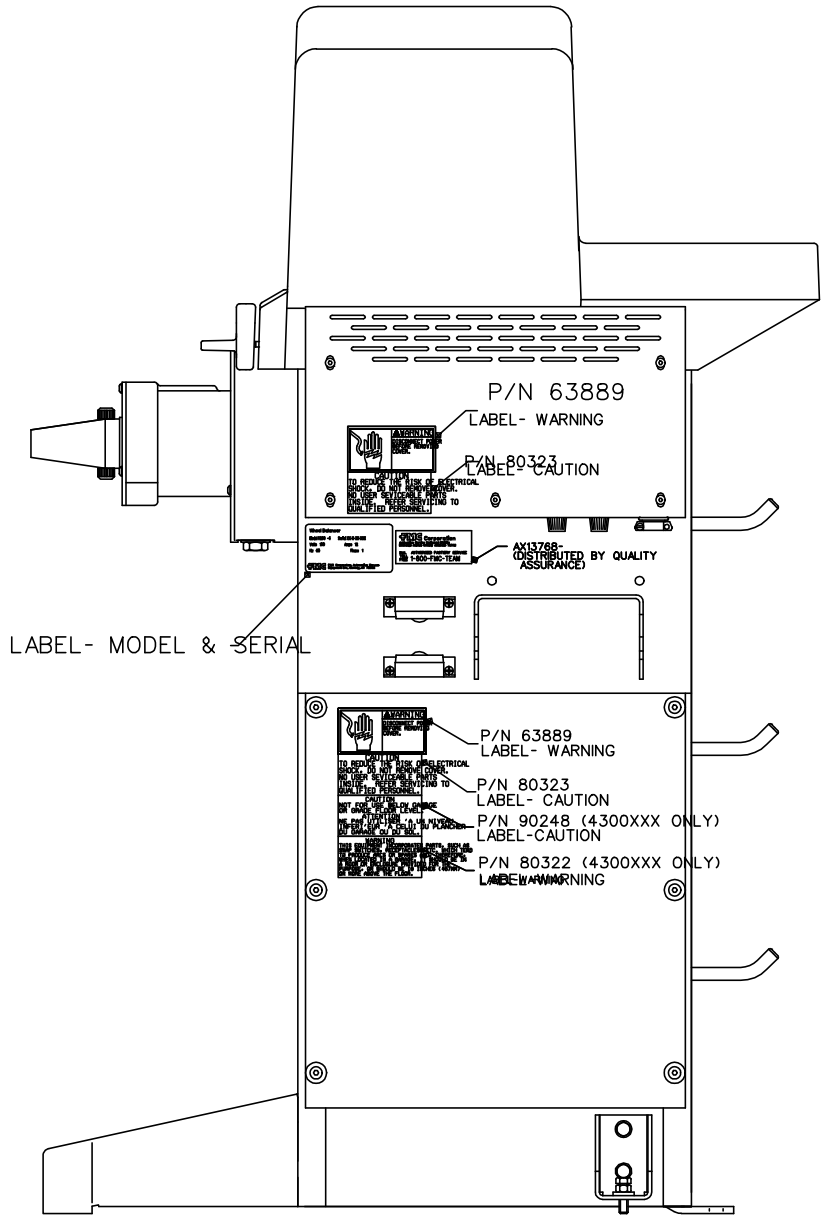
\* Not Shown



# 3.3 BALANCER DECAL PLACEMENT



FRONT VIEW



REAR VIEW

"FOR REFERENCE ONLY"  
 For Current Information see [www.equiserv.com/techsupport](http://www.equiserv.com/techsupport)